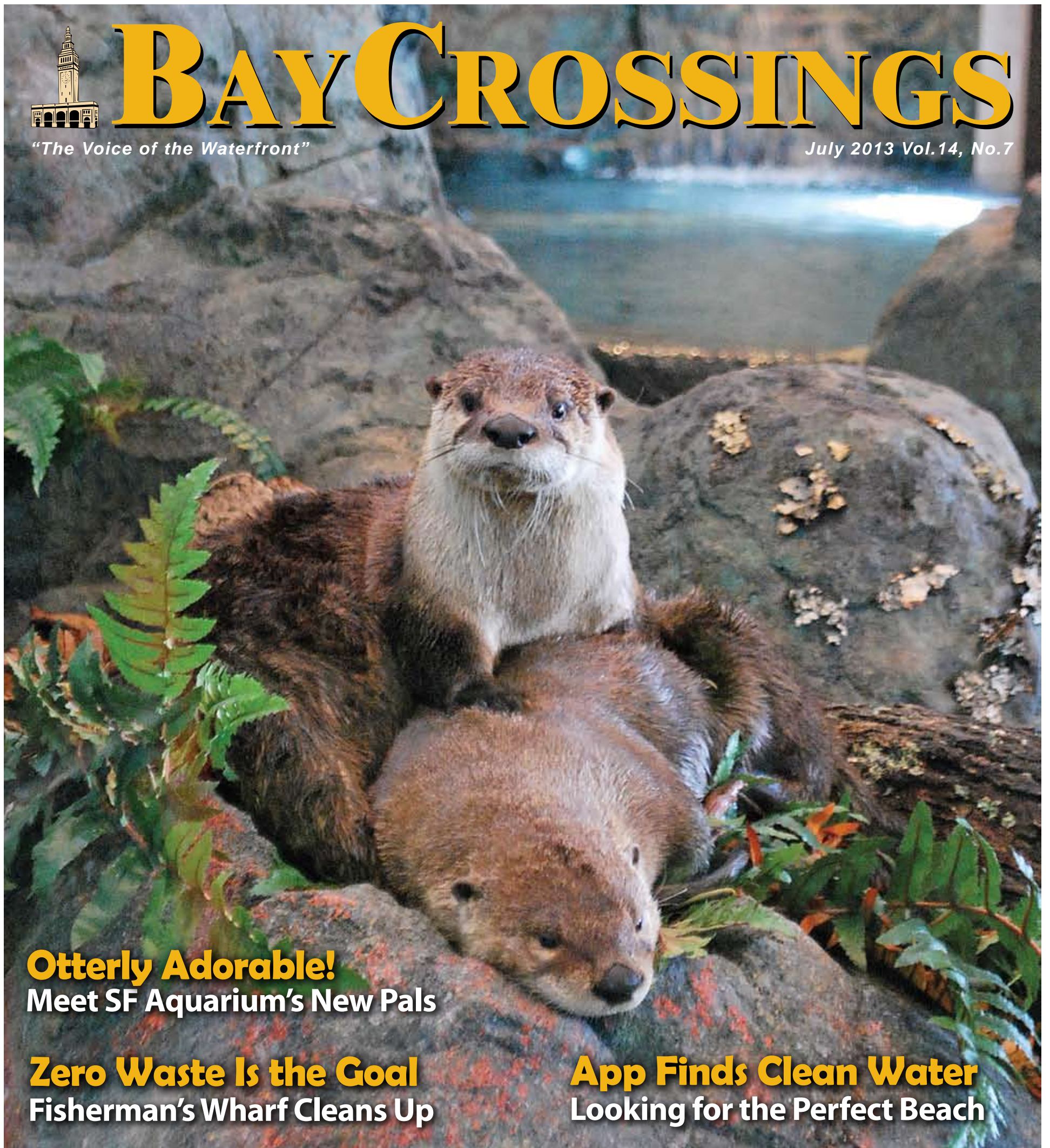


# BAY CROSSINGS

*"The Voice of the Waterfront"*

July 2013 Vol.14, No.7



**Otterly Adorable!**  
Meet SF Aquarium's New Pals

**Zero Waste Is the Goal**  
Fisherman's Wharf Cleans Up

**App Finds Clean Water**  
Looking for the Perfect Beach

Complete Ferry Schedules for all SF Lines

# Rosenblum CELLARS.

## TASTE, TOUR RELAX

Just a short ferry ride across San Francisco Bay lies the original urban winery, Rosenblum Cellars.

Alameda is our urban island with no pretension. Our tasting room is a true gem, with a rustic urban charm that attracts fans from around the world to enjoy the unique, relaxed atmosphere.

**TWO FOR ONE TASTING**  
with this ad.  
\$10 value

TASTING ROOM OPEN DAILY  
FROM 11AM TO 6PM



facebook

[www.rosenblumcellars.com](http://www.rosenblumcellars.com)

twitter

2900 Main St. Suite 1100 Alameda, CA 1-877-GR8-ZINS

Please enjoy our wines responsibly. © 2011 Rosenblum Cel Alameda, CA [www.DrinkIQ.com](http://www.DrinkIQ.com)

Great food to celebrate life in the City !

Enjoy a ten minute walk from the Ferry Building or short hop on the F-Line



**Crab House at Pier 39**

X Voted "Best Crab in San Francisco"

- Sizzling Skillet-roasted Mussels, Shrimp & Crab
- Romantic Cozy Fireplace
- Stunning Golden Gate Bridge View

Open Daily 11:30 am – 11 pm  
2nd Floor, West Side of Pier 39  
Validated Parking

[crabhouse39.com](http://crabhouse39.com) 415.434.2722

**FRANCISCAN  
CRAB RESTAURANT**

- Whole Dungeness Crab
- Breathtaking Bay Views
- Bay side of Historic Fisherman's Wharf

Open Daily 11:30 am – 11 pm  
Pier 43 1/2  
Validated Parking

415.362.7733

[franciscancrabrestaurant.com](http://franciscancrabrestaurant.com)



Capacity. Capability. Character.

West Coast Leader In Aggregates, Dredging, and Marine Construction Services



Call 415-258-6876 or visit our website at [www.dutragroup.com](http://www.dutragroup.com)

Entertainment | Dining **PIER** Shopping | & More

**39**



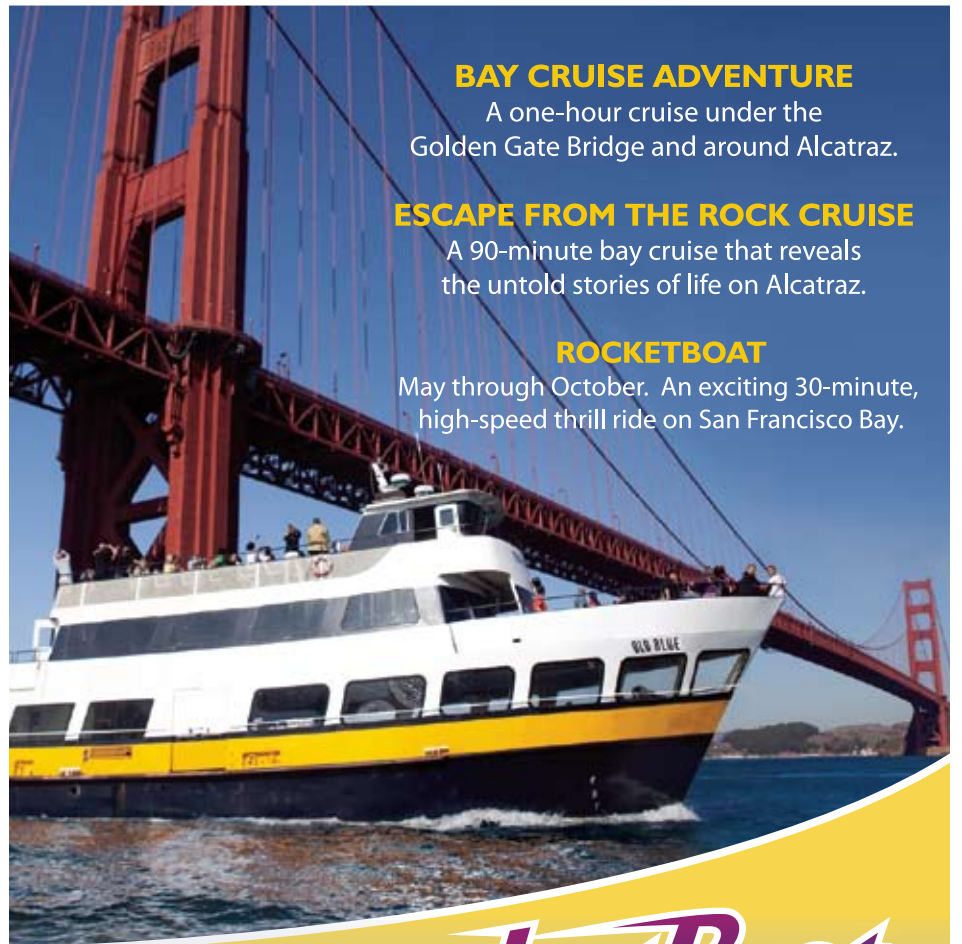
## THE RIVER OTTERS HAVE ARRIVED!

PIER 39 welcomes its otterly adorable new neighbors at the Aquarium of the Bay. Come see the new river otter exhibit and say hello.

BEACH STREET & THE EMBARCADERO  
415-981-PIER | PIER39.COM

# BLUE & GOLD FLEET

Ferries • Bay Cruises • RocketBoat



### BAY CRUISE ADVENTURE

A one-hour cruise under the Golden Gate Bridge and around Alcatraz.

### ESCAPE FROM THE ROCK CRUISE

A 90-minute bay cruise that reveals the untold stories of life on Alcatraz.

### ROCKETBOAT

May through October. An exciting 30-minute, high-speed thrill ride on San Francisco Bay.

**RocketBoat**  
PIER 39 San Francisco

A 30 MINUTE  
**BLAST ON THE BAY!**

MAY thru  
OCTOBER



415.773.118 • [blueandgoldfleet.com](http://blueandgoldfleet.com) • PIER 39

# BAYCROSSINGS

*"The Voice of the Waterfront"*

## columns

- 10 WHO'S ON DECK?**  
Deckhand Vincent Atos  
by **Matt Larson**
- 12 BAYKEEPER**  
App For Clean Beaches  
by **Deb Self**
- 17 SAILING ADVENTURES**  
Staying on Course  
by **Captain Ray**

## features

- 13 YACHT AID**  
Changing the World  
Without Changing Course  
by **Douglas Timmel**
- 14 RIVER OTTERS**  
Welcoming Aquarium of  
the Bay's New Residents  
by **Mallory Johnson**
- 16 GREEN PAGES**  
Fisherman's Wharf Cleans  
Up Its Waste Practices  
by **Bill Picture**

## news

- 06 WATERFRONT NEWS**  
Port of Oakland Gets  
New Executive Director  
by **Patrick Burnson**
- 07 Mayor of Alameda**  
Christens New Barge
- 08 Bay Bridge Photo Exhibit**  
Opens at S.F. City Hall
- 18 A.C. CORNER**  
Artemis Racing Says It  
Will Continue to Compete
- 19 Amtrak Offers \$5 Fares**  
on Capitol Corridor
- 20 Summer Swings Into**  
Jack London Square
- 21 CULTURAL CURRENTS**  
America's Cup in the Arts  
by **Paul Duclos**



## guides

- 22 WATERFRONT ACTIVITIES**  
Our recreational resource guide
- 24 BAY AREA FERRY SCHEDULES**  
Be on time for last call
- 26 AROUND THE BAY**  
To see, be, do, know

## BAYCROSSINGS

July 2013 Volume 14, Number 7

Bobby Winston, Proprietor  
Joyce Aldana, President  
Joel Williams, Publisher  
Patrick Runkle, Editor

**ADVERTISING & MARKETING**  
Joel Williams, Advertising & Marketing Director

**GRAPHICS & PRODUCTION**  
Francisco Arreola, Designer / Web Producer

**ART DIRECTION**  
Francisco Arreola; Patrick Runkle; Joel  
Williams

**COLUMNISTS**  
Captain Ray Wichmann;  
Paul Duclos; Patrick Burnson;  
Deb Self; Matt Larson

**WRITERS & PHOTOGRAPHERS**  
Bill Picture; Joel Williams;  
Mallory Johnson; Douglas Timmel

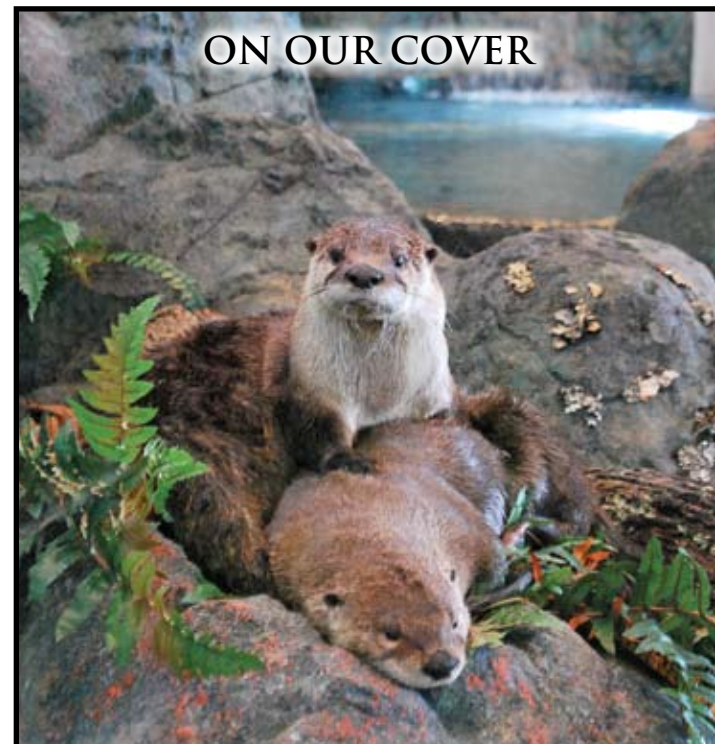
**ACCOUNTING**  
Cindy Henderson

Advertising Inquiries:  
(707) 556-3323, joel@baycrossings.com

Bay Crossings SF Ferry Building Store  
(415) 362-0717  
Clipper customer service center  
(877) 878-8883  
For Transit Information – Dial 511

Bay Crossings  
Ferry Building, #22  
San Francisco, CA 94111  
www.baycrossings.com  
A Division of Nematode Media, LLC

## ON OUR COVER



Aquarium of the Bay's new North American river otter exhibit opened last month, when the public was introduced to the aquarium's newest members, Shasta, Tubbs and Wildcat. This month, on page 14, otter biologists Melissa Schouest and Annie Brethour describe their personal experiences caring for Aquarium of the Bay's new otters. Photo by Joel Williams

### Corrections & Letters

*We appreciate the opportunity to publish our readers' comments, letters or requests for corrections, which can be sent to joel@baycrossings.com.*



See the best of San Francisco

**BIG BUS TOURS**



Golden Gate Bridge

Live Guides

Recorded Narration

Hop-on Hop-off

Free Cycle Hire

[www.opentopsightseeing.com](http://www.opentopsightseeing.com) • 1-877-855-TOUR



**SAN FRANCISCO CRUISES**



Private Charters & Hop-on Bus Tours Available

**GOLDEN GATE BAY CRUISE®**

The Original for 70 Years! Sail under the Golden Gate Bridge and around Alcatraz, and discover San Francisco's history in 12 languages. 8 -14 daily sailings starting at 10 AM.

**CALIFORNIA TWILIGHT CRUISE®**

Enjoy views of the spectacular city lights, live guitar entertainment and hearty appetizers from the buffet on this relaxed 2-hour cruise.



Pier 43½ Fisherman's Wharf [redandwhite.com](http://redandwhite.com) 415-673-2900



Stockton Marina Design-Build



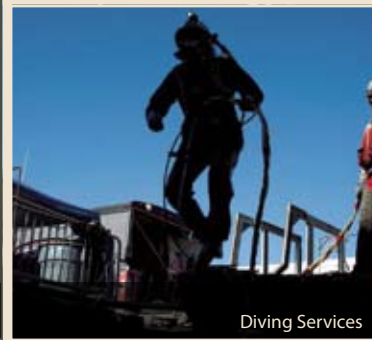
Chevron Long Wharf Marine Engineering Construction



Exploratorium Museum at Pier 15



Tracy Boulevard Bridge Seismic Retrofit



Diving Services

**POWER**  
ENGINEERING CONSTRUCTION CO.

Marine Engineering Construction

MARINE • CIVIL • DESIGN-BUILD



To learn about our engineering construction capabilities, visit us at [www.PowerEngConstruction.com](http://www.PowerEngConstruction.com) or call (510) 337-3800

# Port of Oakland Gets New Chief

BY PATRICK BURNSON

**T**he Port of Oakland Board of Commissioners in June announced the appointment of maritime shipping industry veteran Chris Lytle as the port's new executive director. He begins his new job later this month.

Lytle currently serves as the executive director of the Port of Long Beach, the second-busiest container seaport in North America, a position he has held since November 2011, after having served as the Port of Long Beach's deputy executive director and COO from 2008 to 2011.

Spokesmen said that the Port of Oakland anticipates planning for the future as it ends its four-month search for someone to replace Omar Benjamin, who resigned amid a spending scandal last year. The Port of Oakland's immediate goals include transforming the maritime business.

## Transpacific Carriers Recommend Rate Increase

Ocean cargo carriers comprising the Transpacific Stabilization Agreement (TSA) announced their intention to raise rates this summer. TSA Executive Administrator Brian M. Conrad said transpacific freight rates are still not

keeping pace with rising costs, and "a meaningful increase" from current levels is essential to achieve profitability for the benefit of the trade.

"The revenue issue is not going away," Conrad said. "We have to make the case repeatedly that short-term, off-season rates cannot be extended for 12 months or longer in contracts, and that new capacity entering the Asia-U.S. market reflects global trends and an investment in productivity to meet future long-term demand. It does not somehow diminish service value and it does not justify moving cargo at unsustainable levels."

TSA members are recommending a further guideline general rate increase for all commodities in the amount of \$400 per 40-foot container to the U.S. West Coast and \$600 to all other destinations, subject to contract terms, effective July 1.

The news comes at a time when many industry analysts have criticized liner companies for introducing too many vessels despite a lull in demand. TSA spokesman Niels Erich countered that liner shipping by its nature is subject to periods of overcapacity.

"Ships are ordered based on market forecasts out 15 to 20 years and orders are rarely in full alignment with shorter-term seasonal and cyclical demand," he said. "Larger ships now being delivered represent an investment in future global trade growth, while achieving efficiencies

that lower cost per sailing and help reduce fuel consumption and vessel emissions."

The supply-demand relationship will always influence pricing, said Erich, but he argued that it should not be allowed to drive rates to the exclusion of fundamental considerations about cost or intrinsic value of the service provided.

"So far we see some increased traffic on Suez routes to the East Coast versus Panama because Suez can handle larger ships cascaded from Asia-Europe into the Pacific," he said. "But utilization on all transpacific segments has improved since March and we expect continued incremental growth from Asia to the U.S. in 2013."

Transpacific container lines say they intend to pursue further revenue improvement that is essential if they are to achieve financial viability and maintain service levels customers expect in the service-intensive Asia-U.S. market.

Despite modest revenue gains in 2013-14 service contracts and subsequent increases taken by individual carriers in May, rates remain well below target levels needed to maintain profitability and invest for future growth. Conrad said increases to date are partly offset by rising port charges, labor and inland transportation costs in both the U.S. and in Asia, including recent wage increases for East Coast and Hong Kong longshore workers, higher Suez Canal costs and

higher rail and truck rates for inland equipment repositioning.

## Ocean Carrier Survey Results Released

The results of the AgTC's 2013 Ocean Carrier Performance Survey were announced late last month at the 25th Annual Meeting of the Agriculture Transportation Coalition in San Francisco, with APL winning top ranking. All annual survey responses are aggregated, and the individual responses discarded, to assure confidentiality of each shipper's response. This year's survey was expanded to gain more insight into agriculture and forest products shippers who completed the survey.

The Survey collected the following types of data on shippers:

- Cargo origins in the US and Canada
- Global cargo destinations
- Volume of cargo/containers shipped each year
- Special equipment and handling requirements
- Mode of transport (truck, rail, barge) used to access the departure ports

The AgTC members were then asked to rate ocean carriers in 11 categories of service. For a complete listing, visit [www.agtrans.org](http://www.agtrans.org).

# Port of S.F. Executive Director Moyer Gets Tourism Award

**A**t its 103rd Annual Luncheon meeting in June, the San Francisco Travel Association presented the Silver Cable Car Award to Monique Moyer, executive director of the Port of San Francisco. The Silver Cable Car Award is presented annually by San Francisco Travel to an individual or organization that has made a significant



contribution to San Francisco's visitor industry.

"Monique Moyer is a very special person in San Francisco, especially for the travel and tourism industry," said Joe D'Alessandro, president and CEO of San Francisco Travel. "There is very little that she hasn't personally touched or enabled to happen in San Francisco, especially with infrastructure." D'Alessandro cited

Moyer's work on Moscone South, when she was in the private sector and Moscone West, when she was director of public finance, as well as AT&T Park and the de Young Museum. More recent projects and initiatives in which Moyer has played a role include the new Exploratorium, James R. Herman Terminal and the 34<sup>th</sup> America's Cup.

In videotaped remarks, Lt. Governor Gavin Newsom said, "I think the best thing we did in the years when I was

mayor was to get Monique Moyer to run the port."

"We are in the midst of a wonderful renaissance of the San Francisco waterfront that is touching the lives of San Franciscans and visitors in so many ways. The commission commends Monique for her contribution and leadership in this effort and congratulates her on receiving the Silver Cable Car award," noted Doreen Woo Ho, president of the Port Commission.

## Mayor of Alameda Christens the D.B. *Alameda*



Photo courtesy of Power Engineering Construction

D.B. *Alameda* driving 66" diameter by 115' long steel pipe piles at the BP Lubricants Terminal in Richmond, CA.

In June, Mayor Marie Gilmore of Alameda welcomed a new Bay Area resident to her city: D.B. *Alameda*, the first derrick barge to be built in Alameda in 30 years, is a 100-ton rated marine vessel recently built and ready for service in the San Francisco Bay.

A derrick barge is essentially a floating construction site with the capacity for heavy lifting, pile driving, excavating and dredging. Power Engineering Construction of Alameda has used derrick barges to reconstruct piers, such as Pier 15 and 17 in San Francisco Bay for the new Exploratorium, to drive piles for local oil refineries, to install massive-size fenders on the Bay Bridge and to build marinas on the Delta.

In 2012, after leasing barge equipment for many years, Power Engineering decided

it was time to make the investment and build the ideal barge for its operations. A new derrick barge had not been built in Alameda since 1976. Starting with a Clyde Frame 9 winch, Power Engineering's team of engineers, fabricators, welders, electricians, hydraulic technicians and rigging specialists built a 100-ton crane mounted on a 60' x 130' barge. The crane has 140 feet of boom, four drums and is outfitted with the most sophisticated hydraulic/electric equipment available. Fabrication was completed in just 11 months.

Final assembly and testing were done in November 2012, Cal-OSHA certification was completed and the crane put into service. Between projects, D.B. *Alameda* is docked at Alameda Point along with the USS *Hornet* and Alameda's MARAD fleet.

# BEST SEATS ON THE WHARF

# 4<sup>th</sup> of JULY

## FIREWORKS VIEWING on the SS JEREMIAH O'BRIEN

### PIER 45, FISHERMAN'S WHARF SAN FRANCISCO

### 7:30PM TO 10:00PM

Visit [ssjeremiahobrien.org](http://ssjeremiahobrien.org)  
or call 415.544.0100 to order

# The Bridge Builders Photo Exhibit Opens at San Francisco City Hall

BC STAFF REPORT

The San Francisco Arts Commission opened a new exhibition in June as part of its Galleries Art at City Hall program. The exhibition, *The Bridge Builders*, showcases the workers who constructed the new East Span of the Bay Bridge.

In 85 stunning photographs by Joe Blum, the exhibition captures the human spirit, strength and ingenuity

behind the new East Span. Carefully documenting the bridge project in photographs since its inception in 1998, Blum's photos draw from his unique perspective as a boilermaker, shipfitter and welder. While the artist has photographed all aspects of the structure's erection, the people who labor to build the new bridge hold the greatest interest for Blum. It's clear from the artist's treatment of his subjects that these individuals are an imperative piece of the project's puzzle.

Blum said, "There would not be



© Joseph A. Blum

The Bridge Builders exhibit, currently running at San Francisco City Hall, showcases the workers who constructed the East Span of the new Bay Bridge in 85 stunning photographs by Joe Blum.



## A Brilliant Idea! Change the World without Changing Course



YachtAid Global delivers humanitarian aid to the most remote islands and coastal communities of the world, by using boats which are already cruising to those areas. We deliver school supplies, medical supplies and disaster relief with a 100% volunteer effort. In 7 years we have helped over 15,000 people, who would otherwise be forgotten. Check out our story on our website and donate today!

Info@yachtaidglobal.org | Sponsor@yachtaidglobal.org  
yachtaidglobal.org | +1-619-630-4626



YachtAid Global is the nonprofit arm  
of C2C, Inc. c2california.com

a bridge without the men and women who are building it. They are the ones who have transformed the ideas of the bridge designers, architects and engineers from blueprints and drawings into a living structure of steel and concrete."

The exhibit, which is free and open to the public, is currently staged on the ground floor of San Francisco City Hall and runs through September 27.

An artist's reception will be held on July 11 from 5:30 - 7:30 p.m.



© Joseph A. Blum





# pedal fest

[pedalfestjacklondon.com](http://pedalfestjacklondon.com)

on the waterfront at  
Jack London Square

Saturday  
July 20, 2013  
11am - 7pm

A celebration of bikes, cycling, family, food and fun!  
Stunts! Shows! Demos! Contests!  
Handmade and vintage bikes  
BMX competition

Whiskeydrome: cycling daredevils  
Pedal powered food and beverage  
Rock the Bike: a pedal powered music stage  
New Belgium Beer Garden  
Bike trivia dunk tank  
Bicycle vendors, artisans and more!  
Oaklandish bicycle parade  
Kid's bike rodeo | Cyclecide rides!  
Free EBBC bike valet  
Free SF Bay Ferry rides with bikes



# Lead Deckhand Vincent Atos

BY MATT LARSON

Vincent Atos has an easy answer for what has kept him on the water as a Blue & Gold Fleet deckhand for almost a decade: “Look at the office,” he said as he gazed at the water on a gorgeous day.

“I enjoy my work,” Atos said. “I don’t dread coming to work every day. I come to work enjoying it.” Indeed, it’s not too dreadful imagining the open water amidst iconic bridges and skyscrapers all around you as you earn your paycheck. It’s nothing new for Atos, but he still looks forward to it every morning. “It’s a nice job, it’s great,” he said. “I’ve always liked being outdoors. I’ve never worked

in an office—no cubicle for me.”

We may forget to notice the beauty of the Bay from time to time on our daily commutes, but Atos takes full advantage of working right there on the water. “I take a lot of great pictures on the Bay,” he said. “It’s an inspiration to be here.”

Atos, now with the title of lead deckhand, believes that the Sausalito ferry route is probably the most picturesque of them all, especially because of the chance to see the Golden Gate Bridge so clearly. “From Sausalito you get to see the Golden Gate Bridge, the changes in weather, the clouds—it’s dramatic, especially when the clouds come in.” Atos encounters some pretty amazing photo opportunities on a regular basis and, with his Nikon on board, he seizes as many of them as he can.

“Taking pictures is a very creative



Photo by Matt Larson

Lead Deckhand Vincent Atos aboard Blue & Gold Fleet’s ferry Monarch on the Sausalito run.

outlet for me,” said Atos. “It gives me peace of mind.” He does do some professional wedding photography, but it’s usually just a hobby of his. With a daily front row seat of the Bay it’s pretty hard to resist capturing the seascape on a regular basis. Fortunately Atos always has his smartphone with him and posts to Instagram all the time—he invites you to check out his profile: @vincefoto. “Most of my pictures on Instagram are from work,” he said. “Over the years I’ve taken a lot of Bay pictures; maybe some day I’ll put them into a book.”

Originally from Baguio City in the Philippines, Atos now lives in the Sunset District of San Francisco with his wife. He came to the United States in 1999. “I was just looking for adventure; a change,” he said. “And I stayed!”

About three times a week he and his wife attend a 90-minute Bikram yoga session. “It’s hot yoga—110 degrees—you’re in your own world for an hour and a half without being disturbed by technology,” said Atos.

“The hardest part of that is actually just waking up at 5:30 in the morning and driving to the yoga studio. After that you feel great and look forward to the day.” He and his wife have been practicing this for over 10 years now. “It makes you feel much more relaxed.”

Currently some of Atos’ photography work can be seen at Pearl Gallery on Irving Street in San Francisco. “It’s mostly seascapes and work pictures,” he said. “It’s been there for two years.” And when asked what his favorite thing to photograph is when he’s out on the Bay, he said, “The Golden Gate Bridge. I never get tired of taking pictures of it.”

Aside from the breathtaking views traveling to and from the city on a Blue & Gold ferry, according to Atos, it is that general ease of travel that makes the ferry the best mode of transporting to San Francisco. “The ferry is more relaxing,” he said. “Have a drink, take a nap, take a photo, sit and enjoy the weather.”

**Just Published...**

**Flags of Convenience**

A Novel

**Paul Duclos**

Available Now at the Bay Crossings Store

Call 1-800-AUTHORS to order, or visit [www.iUniverse.com](http://www.iUniverse.com)

## Earn Your Captain's License

Maritime Institute has a course near you!  
From *San Rafael* to *San Diego* or *On-Line* at your own pace.

**Call Today 888-262-8020**    [www.MaritimeInstitute.com](http://www.MaritimeInstitute.com)

<p><b>Captain's OUPV 6-Pack/Master Up to 100GT</b></p> <table style="width: 100%; border: none;"> <tr> <td style="text-align: center; width: 50%;"><i>San Diego</i></td> <td style="text-align: center; width: 50%;"><i>San Rafael</i></td> </tr> <tr> <td style="text-align: center;">June 8 - 19, 2013</td> <td style="text-align: center;">July 8 - 19, 2013</td> </tr> </table>	<i>San Diego</i>	<i>San Rafael</i>	June 8 - 19, 2013	July 8 - 19, 2013	<p><b>Sailing Endorsements</b></p> <table style="width: 100%; border: none;"> <tr> <td style="text-align: center; width: 50%;"><i>San Rafael</i></td> <td style="text-align: center; width: 50%;"><i>San Rafael</i></td> </tr> <tr> <td style="text-align: center;">July 11, 2013</td> <td style="text-align: center;">July 11, 2013</td> </tr> </table>	<i>San Rafael</i>	<i>San Rafael</i>	July 11, 2013	July 11, 2013	<p><b>Towing Endorsements</b></p> <table style="width: 100%; border: none;"> <tr> <td style="text-align: center; width: 50%;"><i>San Diego</i></td> <td style="text-align: center; width: 50%;"><i>San Rafael</i></td> </tr> <tr> <td style="text-align: center;">July 9, 2013</td> <td style="text-align: center;">July 9, 2013</td> </tr> </table>	<i>San Diego</i>	<i>San Rafael</i>	July 9, 2013	July 9, 2013
<i>San Diego</i>	<i>San Rafael</i>													
June 8 - 19, 2013	July 8 - 19, 2013													
<i>San Rafael</i>	<i>San Rafael</i>													
July 11, 2013	July 11, 2013													
<i>San Diego</i>	<i>San Rafael</i>													
July 9, 2013	July 9, 2013													

# For **Work.** For **Play.**

## The Easy Way to Cross the Bay.



SF Ferry Building

Pier 41

Angel Island

AT&T Park

Vallejo

Oakland

Alameda

South San Francisco

Harbor Bay

Follow. Connect. Share.



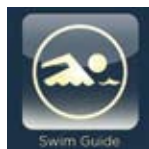
For Ferry Route, Schedule,  
Ticket and Terminal Information  
[www.SanFranciscoBayFerry.com](http://www.SanFranciscoBayFerry.com)  
(415) 705-8291 M-F, 8AM-5PM

 **San Francisco Bay Ferry**

# Free App Lets You Find Clean Beaches

BY DEB SELF

Looking for a Bay Area beach with water clean enough for swimming, surfing and playing in the sand? Download San Francisco Baykeeper's free Swim Guide smartphone app at [www.theswimguide.org](http://www.theswimguide.org). The app and the website allow you to see, at a glance, whether it's safe to go in the water at more than 40 local Bay and ocean beaches.



The Swim Guide is updated weekly, using information from government authorities. Baykeeper provides the Swim Guide in partnership with the Waterkeeper Alliance, our international network of 200 clean water

protection groups worldwide.

Keep in mind that the Swim Guide lets you do more than just find clean water. You can get directions to beaches, view photos, learn which beaches are good for children and recreation, plus share the information on social networks. You can also use the Swim Guide to immediately report water pollution to Baykeeper. We will investigate, notify the proper agencies and make sure authorities address the problem.

The Swim Guide is useful in summer months, when lots of us like to get in and on the water. Most Bay Area beaches are clean during summer, although a few are sometimes unsafe.

During the rainy season, the Swim Guide is even more useful. That's when



terraplanner/Flickr Creative Commons

Check the water quality at more than 40 local beaches with Baykeeper's smart phone app, Swim Guide, available free at [www.theswimguide.org](http://www.theswimguide.org).

Bay Area beaches are most likely to be unhealthy, because rain washes bacteria and other pathogens from sewer systems into the water. These contaminants can cause illness in both wildlife and humans. Right after a rain, water quality is generally at its worst, and it's a good idea to wait three days after rain before going in the water.

The Bay gets hit with this unhealthy pollution every rainy season, because outdated Bay Area sewer systems spill millions of gallons of sewage into the Bay and its tributaries. But now, Baykeeper is making steady progress toward a sewage-free Bay.

We've won legally-binding agreements that compel the region's worst-polluting sewer agencies serving 20 Bay Area cities are required to repair leaky pipes and replace crumbling infrastructure, on an exact, year-by-year schedule. Some have already reduced sewage spills by 75 percent. We'll make sure these repairs continue until sewage ceases to be a major pollution problem for the Bay.

Baykeeper is also working to further improve the Bay Area beach experience

by cleaning up a badly contaminated local beach, Point Molate Beach Park in Richmond. The beach has been blighted for years by hundreds of huge piling logs contaminated with creosote, a now-banned wood preservative. With help from volunteers, we have safely cut these logs into smaller chunks and we're getting them off the beach, along with metal shards, tires, and other large discarded objects—a total of 100 tons of debris.

The cleanup is almost complete, and this month the city of Richmond is reopening the park, which has been closed for a decade. A true treasure and one of the last remaining undeveloped sites along San Francisco Bay, Point Molate beach should soon be healthier for both recreation and wildlife.

If you're going on a vacation, the Swim Guide also covers over 5,000 beaches in the U.S. and Canada, including over 400 in California. The app is available in vehicles rented from Hertz in the Bay Area and in many popular U.S. beach cities.

All beaches need to be healthy for recreation and wildlife, and Baykeeper is working to make it happen. See you on or in the water!



From the Sausalito Ferry, take a left, two blocks south.

SCOMAS  
SAUSALITO

588 BRIDGEWAY 415.332.9551 SCOMASSAUSALITO.COM

*Deb Self is Executive Director of San Francisco Baykeeper, [www.baykeeper.org](http://www.baykeeper.org). Baykeeper uses on-the-water patrols of San Francisco Bay, science, advocacy, and the courts to stop Bay pollution. To report pollution, call Baykeeper's hotline at 1-800-KEEP-BAY, e-mail [hotline@baykeeper.org](mailto:hotline@baykeeper.org), or click "Report Pollution" at [www.baykeeper.org](http://www.baykeeper.org).*



# Changing the World Without Changing Course

BY DOUGLAS TIMMEL

Captain Mark Drewelow's flash of inspiration over a decade ago is now YachtAid Global, a nonprofit that has delivered much-needed supplies to remote maritime communities around the world since 2006.

Captain Drewelow grew up in Southern California, not far from the beach. From the first time he saw the ocean, he was in love with the water. As skipper of private sail boats during the 90s, Drewelow found himself at the helm in far-flung islands and coastal areas around the world. These places were so remote that the local people often relied on the occasional resupply ship to bring in needed goods.

One day in 1999, Drewelow was at anchor north of the remote Ashmore Reef between Australia and Indonesia. Nearby was a 10-meter traditional Indonesian fishing boat with five men aboard. Through gestures, the fishermen asked for food, water, pencils, paper and a wind-up clock—all of which Drewelow provided. Somehow, this small boat navigated through the treacherous reefs back to its island community. Drewelow wondered what

happened to the supplies he gave them.

And that is when the inspiration struck. Private boats were visiting these villages, and they had room aboard to bring in supplies. Why not use private boats that were already cruising to a particular destination to deliver school aid and other materials to villagers?

Drewelow quickly found many captains willing to move supplies to locations on their routes. Paying for the school supplies out of his own pocket, Drewelow made sure paper, pencils, text books, crayons, and even some antiseptic and bandages were on the private boats heading out to various isolated communities. Captains even threw in some of their own money and added to the supplies.

This pioneering work expanded to become YachtAid Global. Today, a network of willing owners, captains and crews deliver humanitarian aid to some of the most remote islands and coastal areas of the world. Since 2006, boats have made more than 50 deliveries helping over 15,000 people. The numbers may seem small, but the difference in the lives of the recipients can be dramatic. Even a delivery of \$2,000 worth of supplies can provide a marked increase in literacy levels, and in the case of disaster relief may save lives.

Deliveries have been made to



Photo courtesy of YachtAid Global

YachtAid Global has relied on volunteers to deliver much-needed supplies to remote maritime communities around the world since 2006.

communities in the Alaskan archipelago, Golfo de Chiriqui Panama, islands in the Fiji chain, throughout Polynesia, southern Chile, Easter Island, Vanuatu, Fiji and more.

Over the years, the concept has expanded to include disaster relief. The private boats can move nimbly into isolated areas that are typically unreachable by the big organizations. A recent example was the tsunami that devastated the Pacific in 2010. Robinson Crusoe Island, a speck of land off the coast of Chile, had its seaside village largely destroyed. Due to the remoteness of the village, aid was difficult to get to the island. YachtAid Global became aware of a private boat heading in that direction and

was able to stock the boat with disaster relief and school aid. A small island in the Fiji chain also had disaster relief delivered shortly after cyclone Evan impacted the area during December 2012.

YachtAid Global is planning another fifteen deliveries during 2013 and 2014. It is entirely a volunteer effort, completely funded by interested individuals who want to make a difference. There are no political, religious or government affiliations or funding.

Captain Drewelow's flash of inspiration, which has now helped over 15,000 people, has truly become a way to "change the world, without changing course." Look for YachtAid Global at [www.yachtaidglobal.org](http://www.yachtaidglobal.org).

## Effortless MOBILE PUMP-OUT SERVICE

INTRODUCING

The Grand Poobah

service for 1,000+ gallon tanks



- fast scheduling • frequent service • easy payment options
- fantastic and friendly techs • individual reports

KEEP THE BAY CLEAN WITH



[www.baygreen.com](http://www.baygreen.com) | [service@baygreen.com](mailto:service@baygreen.com) | 415-621-1393

# You Otter Know!

## A Day in the Life of an Otter Biologist

BY MALLORY JOHNSON

**I**t seems that river otters are all the rage these days. First, Sutro Sam made his debut at the Sutro baths, drawing in fans from all over to observe his daily antics. Then, Aquarium of the Bay's new North

American river otter exhibit opened last month with much fanfare. The public was introduced to the aquarium's newest members, Shasta, Tubbs and Wildcat, giving Sutro Sam some competition for San Francisco's favorite river otter.

While there are so many wonderful things to know about river otters, one of the common questions people ask is what it's like to work one-on-one with these endearing animals. Melissa Schouest and Annie Brethour, otter biologists at Aquarium of the Bay, are here to describe their experiences.

### What is your role working with the otters at Aquarium of the Bay?

**Melissa:** To put it simply, we perform day-to-day care for our otters. This includes everything from feeding

them, cleaning up after them and running training programs with them. We also run extensive behavioral enrichment programs with them, because behavioral and mental care is just as important as keeping the otters physically healthy. It's

different surroundings.

**Melissa:** I love how relaxed they are. We have hammocks for them behind-the-scenes, which they love. I could watch them groom and swing in their hammocks all day.

### What is your favorite thing about working with otters?

**Melissa:** Otters are extremely intelligent animals. Working with them requires you to constantly analyze what you're doing and make adjustments. They like to see what they can get away with. They are very motivated animals that need lots of stimulation, which really allows for great training opportunities.

**Annie:** I love how quickly they pick up new concepts. They are really fun to work with because you can see when they start to understand what you are asking them to do, and then they try-and sometimes succeed-in out-smarting you. They really are quite clever.

### What is an important thing you think people should know about river otters?

**Annie:** A lot of people tend to confuse river otters for sea otters, when in fact they are quite different. For example, river otters are not considered marine mammals. They live in fresh water and actually spend the majority of their time on land, unlike sea otters which live in salt



Photo by Kevin Comora

Aquarium of the Bay's new river otter resident, Wildcat, takes a dip in one of the multiple pools located in the exhibit space constructed specifically for the otters.



Photo by Joel Williams

The new river otters can often be found cuddling together. Here, Shasta and Wildcat are seen lounging together with a slight interest in the many observers peering into their new surroundings.



Aquarium of the Bay Otter Biologists, Melissa Schouest (left) and Annie Brethour.

up to us to keep them mentally engaged and stimulated. We give them puzzles and toys to play with, make sure they get plenty of opportunities to be active, and we even keep them on a variable schedule. It's a lot of work, because you constantly have to change it up to keep them stimulated.

### What is your favorite thing about otters?

**Annie:** I think it's amazing how well they're able to function in different environments. They're incredible hunters on land and in the water, and it's truly amazing to watch them move between the two and adapt to

Sharing time with whales is a privilege.



415-331-6267

[www.sfbaywhalewatching.com](http://www.sfbaywhalewatching.com)

water and spend most of their time in the water. This seems to be the most common mistake that people make when I talk about the otters at Aquarium of the Bay.

**What aspect of Aquarium of the Bay's new river otter exhibit are you most excited about?**

**Annie:** I think that river otters will be the perfect teachers about the importance of the watershed. They are really fun to watch, and there is so much to learn from them. I'm really excited about the opportunity that the river otters will create for our guests to learn about their environment.

**Melissa:** I agree. I think this new exhibit

will really create a unique connection between our visitors and their impact on the environment. After coming nose-to-nose with an otter, you just can't help but to take pause and reflect on what you can change in your life to help these animals thrive.

**What is your favorite feature of the new exhibit?**

**Melissa:** We've taken great care to replicate the natural habitat of river otters and I'm really proud of some of the features that were included in the new exhibit. There are quite a few substrate areas for the otters to play and groom in, such as sand, gravel, dirt and hay to change it up and keep it fresh. We might even be able to

give them some ice or snow some days. River otters love snow. The exhibit also has live fish in the pools and live plants throughout, which I think is a really nice touch for the otters.

**Annie:** I love how dynamic the exhibit is. The otters have multiple pools to swim in, rocks and trees to climb, and pits to dig in. It's great to watch them explore the

exhibit and see how they utilize all the different aspects of it.

To learn more about Shasta, Tubbs and Wildcat, visit [aquariumofthebay.org](http://aquariumofthebay.org), or visit them in person at Aquarium of the Bay on PIER 39.



Photo by Kevin Comora

Great care was taken to recreate the natural habitat of river otters. In this photo, Tubbs peers out from behind a rock formation to check out the scene.

## SUPPORT THE BAY.



### Support San Francisco Baykeeper.

San Francisco Baykeeper is the pollution watchdog for San Francisco Bay. Since 1989, we have been patrolling the Bay for pollution, strengthening clean water laws, and holding polluters accountable. Baykeeper is dedicated to restoring the Bay to a healthy, thriving estuary.

We rely on the support of people like you who care about the health of the Bay and its wildlife. Visit us online at [www.baykeeper.org](http://www.baykeeper.org) and become a member today.



SAN FRANCISCO  
**BAYKEEPER®**

[www.baykeeper.org](http://www.baykeeper.org)



**North Bay Water Services, Inc.**  
POOL SERVICE & REPAIR

### Our Services Include:

- Algae Treatment
- Quality Control Program
- Highly Trained Mature Service Personnel
- 49 Weekly Inspections Per Year
- FREE Diatomaceous Earth (Up to 100 lbs per year)
- Keeping Your Pool Professionally Balanced Each Week
- NO Dangerous Chemicals Stored At Your Home
- Full Service, Equipment Sales & Repair (Available at Additional Cost)

**Weekly**  
**POOL SERVICE**

**Only**  
**\$54**  
Per Month

[WWW.NBWS.COM](http://WWW.NBWS.COM)

**CALL: 800-448-0362**

**To Save Time and Money**

Lic.#664534



# Sea Change Comes to Waste Practices at Fisherman's Wharf

BY BILL PICTURE

**F**isherman's Wharf is well on its way to meeting its ambitious goal of achieving zero-waste by 2017. If achieved, it'll be three years ahead of the citywide deadline passed by the Board of Supervisors in 2002—a major accomplishment by any measure, but even more impressive given the high concentration of waste-generating sources squeezed into the wharf's roughly 30 square-block perimeter.

The wharf's bustling mix of restaurants, shops, hotels and entertainment

establishments draws an estimated 14 million visitors each year. Consider the amount of waste generated by those visitors, then add to the waste stream the packing materials, food scraps and other discarded items generated by the over 120 businesses that serve them, and you'll understand why one of San Francisco's most visited attractions also has the potential to be one of the City's trashiest.

Recognizing these basic facts, the Fisherman's Wharf Community Benefit District (FWCBD) hired sustainability consultants L2 Environmental in November 2010, and L2 has been a driving force behind the green changes.

"When we started, we knew that getting a buy-in from management was going to be key," said L2 founder Leslie Lukacs. "One of the major challenges at Fisherman's Wharf is the high employee turnover. It's a seasonal place. That means that training has to be ongoing, to capture new employees. And sustainability has to be integrated by management into standard business practices."

Still, Lukacs says the first step undertaken was an obvious one—making sure every business had access to compost and recycle bins to minimize the amount of landfill-bound waste. For one block of businesses that shared a trash compactor into which they had been tossing all of their waste, for example, that meant completely re-learning how to take out the trash.

"We painted the trash compactor blue for recycling, and gave them a three-cubic-yard container for compost, and one for garbage. Then we scheduled several trainings and asked that the businesses make it mandatory for their staff to attend



Photo courtesy of L2 Environmental

Local fishing outfit Two X Sea is one of the Wharf's shining stars when it comes to sustainability. Tours like the one pictured are given to showcase the company's sustainable practices.

at least one of the trainings," Lukacs said.

Just as important as having the right equipment is having the knowledge to go with it, according to Lukacs, whose firm was paid using Zero-Waste Grant Program money awarded to the FWCBD by San Francisco Department of the Environment. The Zero-Waste Grant Program awards money in a two-year cycle to nonprofit organizations in San Francisco that are working toward zero-waste goals. The program is a partnership between the City of San Francisco and Recology, which partners with grant awardees. Many of the educational materials that Lukacs uses are provided by Recology.

"When you put out the 'fantastic three'—that's what the three-bin system for landfill, recycling and compost has affectionately been named in San Francisco—"it's important that the bins are accompanied by educational material," Lukacs said. "And Recology's signs are great because they include pictures of what items should be deposited into each bin, so a lot of the guesswork is taken out of it for you."

Still, we all periodically find ourselves standing in front of the bins with trash in our hand, unsure which bin to use. And because we can't quickly find the item in any of the photos, we just choose a bin and hope for the best. "That's why in-person training is important," Lukacs said. "We can answer questions."

Lukacs reported that the most frequently asked question during trainings is still about where to put coffee cups from Starbucks. "And I point at the signs from Recology and say, 'Cups go into compost, and lids go into recycling,'" she said. "It's right there on the signs."

## High-tech trash collection

To step up its zero-waste game, the FWCBD partnered with the Port of San Francisco to invest in high-tech



Photo by Bill Picture

As part of its effort to achieve zero-waste, the Fisherman's Wharf Community Benefit District partnered with the Port of San Francisco to replace conventional waste receptacles with BigBelly Solar bins (pictured) for recycling and garbage.



Photo by Bill Picture

The Fisherman's Wharf Community Benefit District set a goal of being zero-waste by 2017, which would put it three years ahead of the citywide zero-waste deadline established by the San Francisco Board of Supervisors in 2002.



# STAYING ON COURSE

BY CAPTAIN RAY

**T**he waters of San Francisco Bay are constantly in motion. As the tides rise and fall in the Bay, enormous amounts of water move in and out through the Golden Gate and reach as far inland as Stockton and San Jose. The Bay's tidal range, from the lowest of the low tides to the highest of high tides, is about eight and a half feet. While that is the extreme, even a quite moderate three-foot tidal range means that more than three million cubic yards of water pass through the Gate in approximately six hours. With a six-foot tidal change (not unusual), that figure doubles.

In addition, the entire western slope of the Sierra drains into the Bay through the Delta. The fresh river water, being lighter, wants to float on top of the salt water. But three or four million cubic yards of denser,

heavier salt water is a force to be reckoned with. Sometimes these tidal currents just push the fresh water out of its way, sometimes they flow under the fresh water, sometimes they mix and sometimes they swirl around each other in a powerful dance of giant eddies. The velocity of the Bay's tidal currents varies from almost nothing to a little more than six knots (about seven miles per hour).

Sailing on this ever-changing and very complex series of watery interactions can be quite challenging. The current carries everything floating in the water with it (including the boat onboard which you may be reading this). The result of this is that a boat is not always traveling in the desired direction or speed. Depending on the current's orientation to the boat's course, it could speed it up, slow it down or move it to either side of its intended course. The trick for the navigator is to have the course "made good" (where the boat actually goes) match the "intended track" (where you

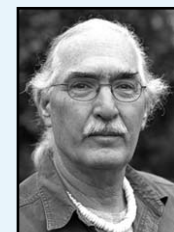
wanted the boat to go). There are several ways to do this.

Some people just let the current have its way and deal with it at the end of their passage. This plan, arguably not the best, calls for you to do the hardest part (head straight into the current) at the end of your trip. There are also ways, both mathematical and graphical, to pre-calculate how much offset will be necessary to compensate for the current.

These methods are commonly used on longer voyages where you are not altering course frequently. Inside the Bay, courses are much shorter and are changed quite often. All that pre-computing can be quite a hassle. Therefore, a simpler, quicker method of staying on course is necessary.

"Ranging" is the name of the technique we employ. All we want to do is move the boat in a straight line in the direction it is pointing. As we learned in high school geometry, any two points define a line. So, look out in front of the boat to the land off in the distance and select two in-line objects, one behind the other. You don't have to identify them and they don't have to be on the chart; you just have to see them aligned in front of the boat. As long as they remain in alignment, the boat is moving down that straight line. If the rear object appears to be moving to the right in relation to the front object, the boat is moving to the right of the line. Now we just adjust our course until they realign and remain realigned and the effects of current are accounted for.

**Ray Wichmann**, is a US SAILING-certified Ocean Passagemaking Instructor, a US SAILING Master Instructor Trainer, and a member of US SAILING's National Faculty. He holds a 100-Ton Master's License, was a charter skipper in Hawai'i for 15 years, and has sailed on both coasts of the United States, in Mexico, the Caribbean, and Greece. He is presently employed as the Master Instructor at OCSC Sailing in the Berkeley Marina.



public trash receptacles. The conventional trash receptacles on the block of Taylor Street near Pier 45 were replaced with two BigBelly Solar bins—one for recycling and one for trash—that use solar power to compact the waste inside them and have a built-in computer that allows for remote monitoring.

"We can go online and see when the bins are full," Lukacs said. "These bins also save on labor because compacting what's inside means a bin only has to be emptied once a day instead of seven times."

Compacting the contents of the bins also prevents them from being rifled through by can-and-bottle collectors, who have a bad habit of picking out the cash-redeemable items and leaving behind a mess. "So the area surrounding the BigBelly bins is much cleaner," Lukacs said.

The FWCBD and the port have been keeping a close eye on the BigBelly bins to see if people are using them correctly, and Lukacs reports that the contamination rate is below 10 percent. So impressed were the partners by those results that they recently embarked on a new pilot

program, installing a third BigBelly Solar bin for composting at two bin clusters in the area.

"It's the first time there's ever been public organics collections on the street," Lukacs said. "Organics is hard because the amount of contamination that it takes to ruin the whole thing is much, much smaller. So we're watching very closely to see how it goes."

## The "shining stars" of Fisherman's Wharf

Lukacs reported that efforts to achieve zero-waste at the wharf have generally been well-received. In fact, a few businesses have already implemented zero-waste strategies on their own and are being used by Lukacs as in-action how-to's. "Scoma's, for instance, is the shining star down at the wharf," she said. "They've had a 90 percent diversion rate for the last eight years now."

"And that's because their owner is 100 percent committed to zero-waste. They're always looking for ways to minimize waste and when they purchase for the restaurant,

being conscious of not creating waste."

Lukacs believes that seeing Scoma's waste diversion tactics in action is more effective than any textbook or speech she can give, so she organizes tours of the restaurant for other area businesses. She says this is especially helpful for other restaurants, whose staff members get a chance to engage with members of their own industry. "Peer-to-peer, I think this knowledge carries more weight," she said.

It's a strategy she hopes to employ in the near future as she tries to enlist the support of local fisherman in the wharf's zero-waste efforts. They've proven a tough nut to crack; but she's hoping that one sustainability-minded fishing outfit, Two X Sea (TXS), can help.

"They believe, 'If fishing is our livelihood and we know that some fish have collapsed, then as fisherman shouldn't we be fishing in a sustainable way so that we have oceans to fish?'" Lukacs said. "But not every fisherman buys into that thinking."

On Lukacs' to-do list is organizing peer-to-peer tours of Two X Sea for other fish processors to share TXS's sustainable

practices, including replacing cardboard boxes for delivering fish with reusable plastic containers. "I've met with the fisherman several times and done trainings and we've made some headway," she said. "Peer-to-peer is the next step."

Overall, Lukacs says she's very happy with the progress that's been made, and proud to be helping Fisherman's Wharf and San Francisco reach its shared zero-waste goal. "I'm on the board of the Zero-Waste International Alliance," she said, "and this year, San Francisco hosted Zero-Waste Week. Seventy people took a tour of Fisherman's Wharf, and they were very impressed with what we're doing. San Francisco is a leader on the international level, and people are really looking at the City as a model."

For more information on the Fisherman's Wharf Community Benefit District's Zero-Waste Initiative, visit [www.visitfishermanswharf.com/about-the-wharf/zero-waste-initiatives](http://www.visitfishermanswharf.com/about-the-wharf/zero-waste-initiatives).



# Artemis Racing Says It Will Continue in Cup Competition

**A**rtemis Racing says it is moving forward with its challenge for the America's Cup. The team's continued participation had been in doubt following a tragic capsizing that led to the death of a crew member in May.

The Swedish challenger has confirmed it is now preparing its second AC72, which will undergo a rigorous testing regime. When the sailing team is satisfied that the boat is ready to race, it will join the Louis Vuitton Cup, America's Cup Challenger Series.

"Artemis Racing's decision to continue will inspire race fans," said Stephen

Barclay, the CEO of the America's Cup Event Authority. "I'm sure we'll see massive support and goodwill for the Swedish team." Paul Cayard, the CEO of Artemis Racing, said: "We are working around-the-clock to get our new boat ready, in the water and to prepare our team to race. We still have a mountain to climb, but our plan is to launch our new boat in early July and get ourselves in a position where we can race by the end of the month."

"Learning that Artemis Racing is focused on getting to the start line is truly great news," Barclay said. "I don't think we can expect them to be ready for the



Guilain GRENIER / ORACLE TEAM USA

ORACLE TEAM USA began two-boat testing in late June. Both of the team's AC72 racing yachts spent the time running through various tests and boat set-ups as they maneuvered around the San Francisco Bay. Spithill took the helm of one AC72 while Ben Ainslie was behind the wheel of the other AC72. Two full crews – 22 sailors combined – were onboard for the session. Through two-boat training, the crews run through a list of tests between the boats – from different sails to different mode settings.

first races but I'm certain the America's Cup community will support them in every way possible."

Following confirmation from Artemis Racing that it intends to continue, Regatta Director Iain Murray has updated the schedule to reflect one of his safety recommendations developed after the capsizing, reducing the number of preliminary rounds to five from

seven. This safety recommendation followed team feedback indicating more maintenance time between races was desirable.

The Summer of Racing kicks off with an opening ceremony on July 4, followed by a fleet race with the Defender and challengers on July 5. The first race day of the Louis Vuitton Cup, America's Cup Challenger Series, remains July 7.



## Experience Sausalito's Great Outdoors!



4th of July Celebration & Fireworks  
Gabrielson Park, 5pm-9:30pm  
Parade & Picnic  
Downtown, Dunphy Park, 10am-5pm



Jazz & Blues by the Bay  
Gabrielson Park, 6:30pm-8:30pm  
Friday nights, thru August 23rd



Sausalito Art Festival  
Labor Day Weekend, 10am-6pm  
Marinship Park/ Bay Model

For more information call the Sausalito Chamber of Commerce at 415.331.7262 or visit [www.sausalito.org](http://www.sausalito.org).



Scan the QR code with a smartphone or tablet to download the Sausalito app.

# Pain

top-rated clinic, Financial District, friendly staff

Search

Feeling Better

[www.sfacugroup.com](http://www.sfacugroup.com)  
415 445 9388

SAN FRANCISCO  
ACUPUNCTURE GROUP

# Take Five Friends for \$5 Each This Summer Onboard Amtrak's Capitol Corridor

Summer is the perfect time for new adventures, quick getaways and spending time with friends and family. This summer, make it easy on the wallet when you get onboard the Capitol Corridor with a new Take 5 fare. Ideal for families or groups, just purchase one full-fare train ticket and bring up to five additional passengers for only \$5 each, each way. So make the most of free time this summer, and take Amtrak to enjoy traffic-free, hands-free, stress-free travel.

"What a perfect way to travel with

your family and friends this summer," said Managing Director David Kutrosky. "Our Take 5 discount makes it easy to visit Old Sacramento with your little ones, or check out a game in Oakland, or go shopping with friends in San Francisco—and avoid I-80 traffic too!"

This online-only discount offer must be booked at least 24 hours in advance and is valid for travel through September 1, 2013 every day except Mondays and Fridays. For more information, visit [amtrak.com/take5](http://amtrak.com/take5) or call 1-877-9-RIDE CC.

The Comedy Circuit presents  
**DARREN CARTER**



**July!**  
**26<sup>TH</sup>**  
**27<sup>TH</sup>**  
**8pm** 2013  
\$15/gen  
\$10/student

AS SEEN ON  
**SHOWTIME.**

**CHELSEA  
LATELY** 

HELD AT THE COMEDY CENTRAL  
**FETTERLY PLAYHOUSE**

Tickets & info available at  
**VallejoComedy.com**  
**707.290.6995**



**IT'S A STAND-UP COMEDY SHOW ... IN VALLEJO!**

**BUY TICKETS @ [GOLDENGATE.ORG/GIANTSFERRY](http://GOLDENGATE.ORG/GIANTSFERRY)  
OR CALL 1.877.4SFGTIX (1.877.473.4849)**



**GOLDEN GATE LARKSPUR**

**GIANTS**

**FERRY**

**SCORES!**



# Summer Swings Into Jack London Square

Summer is in full swing at Jack London Square, the perfect outdoor venue to enjoy the season's best free festivals, freshest farmer's markets and beautiful outdoor dining on the waterfront. The month of July offers a packed calendar of excitement including the 4th of July Festival of Family Fun, Pedalfest (celebrating all things bike-related) and even the chance to meet several animals up for adoption through the East Bay SPCA.

First, head down to Jack London Square for a full day of holiday excitement at the 4th of July Festival of Family Fun! The waterfront will be abuzz with

a bubble wrangler, jugglers, magicians, Uncle Sam stilt walkers, a petting zoo, face painters, balloon artists, hula hoopers, bike rentals, puppet shows, craft making, fire engine trucks and performances from the Circus Spire Youth Troupe. Families will also enjoy play rivers with earthy, kinetic environments, from Riveropolis, as well as a Conscious Carnival featuring several eco-games including Toss Out Tonsil Fuels, Recycle Swish, Seeds for Life and High Biker/Hi-Striker. Free to attend, the festival will also feature food options, tasty treats, drinks, music and more!

Pedalfest returns to Jack London Square on Saturday, July 20 to celebrate all things cycling at the Bay Area's premier

bicycle festival. This annual event will pack the waterfront with more than 20,000 biking enthusiasts enjoying bicycle-themed entertainment, food and exhibits. Free to attend, Pedalfest-goers will enjoy cycling daredevils performing in a 30-foot Whiskeydrome; two-wheeled stunts by pro riders; BMX competitions; a pedal-powered stage featuring live music; a children's bicycle parade; folding bike races; a Bicycle Rodeo for kids; pedal-powered food; and a dazzling collection of new, vintage and handmade bikes. Additionally, a selection of beers will be available from New Belgium Brewing, with all proceeds being donated to the East Bay Bicycle Coalition.

On Saturday, July 13, Jack London Square is set to partner with the East Bay SPCA to find forever homes for furry friends. On this special day, the waterfront will welcome friendly dogs, adorable kittens and bunnies from more than 30 East Bay pet adoption agencies.

In addition to all the waterfront events, Jack London Square visitors can dine at a variety of contemporary restaurants including Bocanova, Forge Pizza, Haven, Lungomare and more. Visitors can easily bike, ferry or drive to Jack London Square. For additional information, visit [www.jacklondonsquare.com](http://www.jacklondonsquare.com).

**DANCING UNDER THE STARS**

JUL 5 HUSTLE (4 STEP)  
 JUL 12 MERENGUE  
 JUL 19 WC SWING  
 JUL 26 BACHATA  
 AUG 2 ELECTRIC SLIDE

AUG 9 E C SWING  
 AUG 16 ARGENTINE TANGO  
 AUG 23 NIGHT CLUB 2 STEP  
 AUG 30 SALSA

FRIDAYS | 8:30 PM DANCE LESSONS BEGIN | 9:15 PM DANCE PARTY  
 PAVILION STAGE | BROADWAY+WATER STREET | JACK LONDON SQUARE

ON THE WATERFRONT IN JACK LONDON SQUARE  
 COMPLIMENTARY DANCE LESSONS PROVIDED BY LINDEN STREET DANCE STUDIO  
 TAKE THE B-LINE SHUTTLE | FOR A COMPLETE LISTING OF SPECIAL EVENTS  
 VISIT [WWW.JACKLONDONSQUARE.COM](http://WWW.JACKLONDONSQUARE.COM)

PORT OF OAKLAND | Linden Street Dance Studio | Jack London Square

**WATERFRONT  
FLICKS**

**THURSDAYS**

JULY 11 HITCHCOCK  
 JULY 25 BRAVE  
 AUGUST 8 SKYFALL  
 AUGUST 22 GOONIES

**FREE & OUTDOORS**  
 MOVIES BEGIN AT SUNDOWN | BIKE, DRIVE OR WALK  
 COME EARLY FOR FOOD, BEER, TRIVIA & FUN  
 BLANKETS AND STADIUM CHAIRS RECOMMENDED  
 MARKET LAWN | [WWW.JACKLONDONSQUARE.COM](http://WWW.JACKLONDONSQUARE.COM)  
 BEER PROCEEDS TO BENEFIT THE EAST BAY BIKE COALITION

PORT OF OAKLAND | JACK LONDON square | EAST BAY BICYCLE COALITION | EAST BAY EXPRESS

# America's Cup Celebrations in Art and Music

BY PAUL DUCLOS

The Fine Arts Museums of San Francisco are now presenting *Impressionists on the Water*, an exhibition deeply tied to the physical and cultural landscape of the Bay Area. *Impressionists on the Water* has been organized in conjunction with America's Cup and offers a unique complement to this summer's races on the Bay.

This exhibition celebrates the French Impressionists' fascination with recreational and competitive sailing, a developing sport in 19th century France. Select highlights from the museums' permanent collection will be joined at the Legion of Honor with key loans from the Musée d'Orsay, Paris; the National Gallery of Art, Washington D.C.; the Nationalmuseum, Stockholm; and the Kröller-Müller Museum, Otterlo, the Netherlands, among other notable institutions.

Artists featured in *Impressionists on the Water* often had significant experience with sailing and other water sports. Gustave Caillebotte was a talented boat designer and builder, Claude Monet painted aboard a floating boat studio and Paul Signac sailed the coasts of Europe extensively in the roughly 30 boats he owned during his lifetime.

These artists' hands-on experiences lend many of the paintings and works on paper in this exhibition a precise level of detail and an evident sense of practical knowledge of sailing, yachting, and rowing.

[legionofhonor.famsf.org](http://legionofhonor.famsf.org)

Just nine years before Robert Schumann went insane and died in an asylum at Endenich, Germany, on July 29, 1856, he composed his opera *Genoveva*. The strongest element of the work is the overture, most aficionados agree, but the nine-minute segment is still

rarely performed by opera orchestras. Fortunately, the San Francisco Symphony found a good reason to expose new audiences to this nearly-forgotten work. As a warm-up to Schumann's "Piano Concerto in A Minor" featuring the virtuoso Jonathan Biss, the overture made perfect sense. Indeed, it confirmed the view of many critics that the doomed composer was principally a symphonist, with only a small talent for musical theater, much less grand opera.

The San Francisco Symphony takes another bold move in staging an event to coincide with America's Cup this month: an evening of passion and romance with this showcase of Tchaikovsky's most recognizable works. With its wild melodies, opening the program is the waltz from *The Sleeping Beauty*, followed by the endearing *Romeo and Juliet* "Fantasy Overture." Rounding out the program are Tchaikovsky's "Violin Concerto" and heroic "1812 Overture."

The performance on July 20 takes place at San Francisco's newest outdoor venue, America's Cup Pavilion, located on Pier 27/29 on the Embarcadero, which features panoramic views of both the city skyline and San Francisco Bay.

[www.sfsymphony.org](http://www.sfsymphony.org)

Finally, it's not too late to catch a new production by the San Francisco Opera company of Jacques Offenbach's *The Tales of Hoffman*. Two more performances are scheduled for July 3 and 7.

While there's not an "America's Cup" angle here, there are plenty of other reasons to check this out:

A sensitive poet searches for love and repeatedly finds it lies just beyond his reach in this marvelously melodic masterpiece. Singing the title role is tenor Matthew Polenzani, who was praised by *The New York Times* as "coming into his prime ... singing with increasing ardor, richness and power." He is joined by the always-astonishing Natalie Dessay, who gave "a precise, luminous and impeccably



Claude Monet: "The Seine at Argenteuil." 1874. Photo Credit: Andrew Fox

controlled performance" (*San Francisco Chronicle*) in the title role of *Lucia di Lammermoor*, as Antonia, as well as Hye Jung Lee, who was praised for her vocally "fierce, gleaming beauty" (*San Francisco Chronicle*) as Madame Mao in *Nixon in China* (2012), sings Olympia; in their Company debuts, Irene Roberts as Giulietta and mezzo-soprano Angela

Brower, is Nicklausse, the Muse; and charismatic bass-baritone Christian Van Horn performs the villains who thwart Hoffmann's desires. Laurent Pelly (*The Daughter of the Regiment*, 2009) directs a new production of this richly imaginative, psychologically astute gem.

[www.sfopera.com](http://www.sfopera.com)



**Scoma's Restaurant**  
Fisherman's Wharf  
Pier 47 on Al Scoma Way  
415-771-4383  
[www.scomas.com](http://www.scomas.com)

# WATERFRONT ACTIVITIES

- Every Wednesday** **6PM – 8PM – Wednesday Night Sailing - OCSC Sailing, Berkeley, 510-843-4200, [www.ocscsailing.com](http://www.ocscsailing.com)**  
Enjoy a relaxing evening on the bay! Set sail on one of our larger yachts skippered by a professional OCSC skipper, followed by chowder, chili, chips & salsa, and beverages from 8 – 9:30 PM in our club room. Cost: \$60 Non-members, \$45 Members
- July 4** **7:30PM – 10:30PM – SF City Front Fireworks on the Schooner Seaward - OCSC Sailing, Berkeley, 510-843-4200, [www.ocscsailing.com](http://www.ocscsailing.com)**  
View the SF fireworks from the best location on the Bay, and enjoy a view of the Bay Lights on your sail home! Cost: OCSC Members \$93.75, Non-members \$125.
- July 5** **6PM – 8:30PM – Sunset Sail - Call of the Sea, Sausalito, 415-331-3214, [www.callofthesea.org](http://www.callofthesea.org)**  
Climb aboard the classic schooner *Seaward* and see San Francisco from the water! Take in an unmatched view of the city front as you sail by famous San Francisco sights such as the Golden Gate Bridge, Alcatraz, and Angel Island. You can sit back and enjoy the view, or get involved in sailing the schooner with the help of our professional crew. Complimentary wine, cheese, and light refreshments will be served. A relaxing way to end the week! Tickets: \$50 per passenger
- July 6** **9AM - 11:30AM – Stand Up Paddle Boarding - Outback Adventures, Larkspur, 415-461-2222, [www.outbackadventures.com](http://www.outbackadventures.com)**  
Come join Outback Adventures and learn why Stand Up Paddle Boarding is one of the fastest growing paddle sports in the industry. Learn paddle technique and get an opportunity to try many different kinds of board. We will practice the skills in the protected waters of the Corte Madera Creek, no experience necessary. (\$60 per person 2.5 hour class)
- July 7** **9AM – Noon – Stand Up Paddleboarding 101 - California Canoe & Kayak, Oakland Estuary, 800-366-9804, [www.calkayak.com](http://www.calkayak.com)**  
Give Stand Up Paddling a try in our introductory SUP class. SUPing has become incredibly popular in a few short years because it's so fun, easy, and another GREAT way to get on the water. (It's good for you, too.) No previous paddling or surfing experience is necessary. This 3-hour session in the sheltered water of the Oakland Estuary will get you started, and you'll be cruising in style in no time. Our SUP boards are great for novices - great for rentals too, once you've completed the class. Cost: \$60
- July 8-19** **Captain OUPV (6-Pack/100GT) - Maritime Institute, San Rafael and Monterey, 888-262-8020 [www.MaritimeInstitute.com](http://www.MaritimeInstitute.com)**  
Why settle for just an OUPV license when our USCG approved Captains course meets the requirement for not only the OUPV/6-Pack License; but also - OUPV up to 100 GT - Master or Mate Near Coastal less than 100 GT – Master or Mate Inland less than 100 GT. To register or view our complete schedule, visit [www.MaritimeInstitute.com](http://www.MaritimeInstitute.com). See our ad on page 10.
- July 13** **9AM – 2PM – Tomales Bay Tour - Outback Adventures, Larkspur, 415-461-2222, [www.outbackadventures.com](http://www.outbackadventures.com)**  
Come experience one of the premier paddling destinations in California on this guided kayak tour! Wildlife abounds in this spectacular setting, one of the largest protected bays and coastal area in California. Half way through our paddling tour we will stop on a secluded beach only accessible by small water craft and eat lunch. (\$85 per person 5 hour tour)
- July 13** **7PM – 9PM – Advanced Knot Tying Seminar - OCSC Sailing, Berkeley, 510-843-4200, [www.ocscsailing.com](http://www.ocscsailing.com)**  
Learn to tie more than just the bowline, cleat hitch and figure-8. In this seminar you'll explore and learn to tie a variety of nautical knots. Cost: OCSC Members FREE, Non-Members \$25

**SAIL THE SCHOONER SEAWARD!**

**Public Sunset Sails** with wine & cheese most Friday evenings.

**Public Family Adventure Sails** most Sunday mornings.

**Port:** Bay Model Visitor Center in Sausalito

**Cost:** Adults \$50, Youth (6-12) \$25, Children (under 6) free

 A 501 (c)(3) nonprofit educational organization. To register visit [www.callofthesea.org](http://www.callofthesea.org).

**Tours - Classes - Sales - Rentals**

 **OUTBACK ADVENTURES**



**Now Offering Stand Up Paddleboarding**

**[outbackadventures.com](http://outbackadventures.com) – 415.461.2222**

# WATERFRONT ACTIVITIES

- July 17**    **6PM – 8PM – Women’s Wednesday Night Sail! Skippered by OCSC GM Alicia Witham - OCSC Sailing, Berkeley, 510-843-4200, [www.ocscsailing.com](http://www.ocscsailing.com)**  
Join the all-women’s Wednesday Night Sail boat, followed by chowder, chili, chips & salsa, and beverages back on shore in our club room. Cost: OCSC Members \$45, Non-Members \$60
- July 19**    **6:30PM – 9:30PM – Oakland Estuary Sunset Kayak Trip - California Canoe & Kayak, 800-366-9804, [www.calkayak.com](http://www.calkayak.com)**  
Sunset kayaking is an enchanting experience. The water often turns glassy and calm on the Oakland Estuary late in the day, and the sunset adds to the unique ambiance. We’ll enjoy a leisurely paddling pace, and weather depending, we’ll paddle towards the mouth of the Oakland Estuary, or towards Alameda Island, taking in the quaint sights of this nautical community. You’ll stay warm and dry in our cozy double sea kayaks too. Cost: \$39
- July 20**    **7PM – 10PM – Moonlight Paddle, Outback Adventures - Larkspur, 415-461-2222, [www.outbackadventures.com](http://www.outbackadventures.com)**  
Navigating your kayak by moonlight is a mystical experience you won’t soon forget. This unique kayak tour allows for a grand view of the moon rising into the night’s sky. We will paddle leisurely while admiring the moon’s silvery light reflecting off the water’s surface. (\$65 per person 3 hour tour)
- July 20**    **7:30PM – 10:30PM - Moonlight Kayaking, Jack London Square - California Canoe & Kayak, Oakland Estuary, 800-366-9804, [www.calkayak.com](http://www.calkayak.com)**  
Moonlight paddling is enchanting! The water is calm and glassy on the Oakland Estuary and the city lights add to the ambiance. We enjoy a leisurely pace as the sun sets and the moon rises, illuminating a delightful evening. Cost: \$49
- July 21**    **9AM - 11:30AM – Stand Up Paddle Boarding - Outback Adventures, Larkspur, 415-461-2222, [www.outbackadventures.com](http://www.outbackadventures.com)**  
Come join Outback Adventures and learn why Stand Up Paddle Boarding is one of the fastest growing paddle sports in the industry. Learn paddle technique and get an opportunity to try many different kinds of board. We will practice the skills in the protected waters of the Corte Madera Creek, no experience necessary. (\$60 per person 2.5 hour class)
- July 27**    **10AM – 2PM – Kayak Basics – California Canoe & Kayak, Oakland Estuary, 800-366-9804, [www.calkayak.com](http://www.calkayak.com)**  
Are you ready to try kayaking? Maximize your fun on the water! This 4 hour class emphasizes basic water safety using recreational kayaks. You will learn the basic paddle strokes and fundamental kayak maneuvers in a calm water setting. Class fee includes kayak, paddling gear, and a coupon for 50% off a future kayak rental (one hour)! Cost: \$59
- July 28**    **9AM – 2PM – Tomales Bay Tour - Outback Adventures, Larkspur, 415-461-2222, [www.outbackadventures.com](http://www.outbackadventures.com)**  
Come experience one of the premier paddling destinations in California on this guided kayak tour! Wildlife abounds in this spectacular setting, one of the largest protected bays and coastal area in California. Half way through our paddling tour we will stop on a secluded beach only accessible by small water craft and eat lunch. (\$85 per person 5 hour tour)

Waterfront Adventures is an advertising sponsored section for activities on or around the water in the Bay Area. If you are interested in having your events or activities listed in this section contact Joel Williams at [joel@baycrossings.com](mailto:joel@baycrossings.com).

**California Canoe & Kayak**  
Jack London Square  
409 Water Street  
Oakland, CA 94607  
510-893-7833  
open 10 to 6

[calkayak.com](http://calkayak.com)

Sales - Rentals - Classes - Trips  
Kayaks - Canoes - Stand-up Paddle Boards



 **OCSC SAILING**  
Inspire Confidence

The School Sailors  
Recommend if You  
Want to Become  
**Confident**

Call or Click | FREE BROCHURE  
**800.223.2984**  
[www.OCSC.com](http://www.OCSC.com)



# All Bay Area Ferry Schedules in One Place!

## Golden Gate Ferry

### LARKSPUR\*

Weekdays (excluding Holidays)				Weekends and Holidays			
Depart Larkspur	Arrive S.F. Ferry Bldg.	Depart S.F. Ferry Bldg.	Arrive Larkspur	Depart Larkspur	Arrive S.F. Ferry Bldg.	Depart S.F. Ferry Bldg.	Arrive Larkspur
5:45	6:15	6:25	6:20	6:50	9:40 a.m.	10:30 a.m.	-----
6:35 a.m.	7:05 a.m.	7:10 a.m.	7:40 a.m.	11:40	12:30 p.m.	12:40 p.m.	1:30 p.m.
7:00	7:30	7:35	8:05	1:40 pm	2:30	3:45	4:35
7:50	8:20	8:30	9:05	4:45	5:35	6:25	7:15
8:20	8:50	9:10	9:45	-----	-----	7:25	8:10
9:15	9:50	10:10	10:45				
10:10	10:45	10:55	11:30				
11:10	11:45	11:55	12:30 p.m.				
11:40	12:15	12:25	1:00				
12:40 p.m.	1:15 p.m.	1:25 p.m.	2:00				
2:15	2:50	3:00	3:30				
2:50	3:25	3:35	4:05				
3:40	4:15	4:25	4:55				
4:15	4:45	5:00	5:30				
-----	-----	5:20	6:05				
5:05	5:40	5:55	6:25				
5:40	6:15	6:25	6:55				
6:35	7:10	7:20	7:50				
7:25	8:00	8:10	8:40				
8:50	9:25	9:35	10:05				

One-way Ferry Fares		
	Larkspur	Sausalito
	Daily	Daily
Adult Cash Fare (19 – 64)	\$9.50	\$10.25
Clipper	\$6.25	\$5.25
Youth/Senior/Disabled	\$4.75	\$5.00
Children 5 and under (limit 2 per fare-paying adult)	FREE	FREE

\* Direct ferry service is provided to all Giants games at AT&T Park. Special service is provided to various concerts and the Bay to Breakers Race. On weekdays, with the exception of the 5:20pm San Francisco departure which uses a high-capacity Spaulding vessel, all other trips use high-speed catamarans. Weekend service is provided by a high-capacity Spaulding vessel.

### SAUSALITO

Weekdays (excluding Holidays)				Weekends and Holidays			
Depart Sausalito	Arrive S.F. Ferry Bldg.	Depart S.F. Ferry Bldg.	Arrive Sausalito	Depart Sausalito	Arrive S.F. Ferry Bldg.	Depart S.F. Ferry Bldg.	Arrive Sausalito
7:10 a.m.	7:35 a.m.	7:40 a.m.	8:10 a.m.	11:20 a.m.	11:50 a.m.	12:00 p.m.	12:30 p.m.
8:20	8:45	10:00	10:30	12:45 p.m.	1:15 p.m.	1:25	1:55
10:55	11:25	11:35	12:05 p.m.	2:10	2:40	2:50	3:20
12:15 p.m.	12:45 p.m.	12:55 p.m.	1:25	2:35	3:05	3:25	3:55
1:55	2:25	2:35	3:05	3:50	4:20	4:40	5:10
-----	-----	3:30	4:00	4:15	4:45	5:05	5:40
3:25	3:55	4:20	4:45	5:35	6:05	-----	-----
4:25	4:55	5:15	5:45	6:00	6:30	6:45	7:15
5:05	5:35	5:50	6:15	7:30	8:00	-----	-----
6:05	6:35	6:50	7:20				
6:35	7:05	7:55	8:20				
7:35	8:05	-----	-----				

Contact Information: For the Golden Gate Ferry website, visit: <http://goldengateferry.org/>  
Toll free 511 or 711 (TDD) | Comments and questions can be submitted at <http://ferrycomments.goldengate.org/>

Holiday service is in effect on Martin Luther King, Jr. Day, Presidents Day, Memorial Day, Independence Day, Labor Day, and the day after Thanksgiving Day (Sausalito).  
The Larkspur line operates on a Modified Holiday Schedule on the day after Thanksgiving Day.

No ferry service on New Year's Day, Thanksgiving Day, and Christmas Day.

## Blue & Gold Ferry

### TIBURON COMMUTE

TIBURON – S.F. Ferry Building			
Weekdays			
Depart Tiburon	Arrive S.F. Ferry Bldg.	Depart S.F. Ferry Bldg.	Arrive Tiburon
5:35 a.m.	6:00 a.m.	6:05 a.m.	6:25 a.m.
6:40	7:05	7:10	7:35
7:50	8:15	8:20	8:40
8:45	9:10	-----	-----
-----	-----	4:25 p.m.	4:50 p.m.
4:55 p.m.	5:20 p.m.	5:25	5:50
5:55	6:20	6:30	6:55
7:05	7:30	7:35	8:00
-----	8:50*	8:55*	9:15*
9:20*	10:05*	-----	-----

TIBURON – Pier 41			
Weekdays			
Depart Pier 41	Arrive Tiburon	Depart Tiburon	Arrive Pier 41
10:50 a.m.	11:10 a.m.	11:15 a.m.	12:00 p.m.
12:10 p.m.	12:30 p.m.	12:35 p.m.	12:55
1:05	1:25	1:35	2:20
2:30	2:50	3:00	3:20
3:25	3:45	3:55	4:25
4:10	4:50	-----	-----
4:25	5:00	5:10	6:05
-----	7:55	8:00	8:35
8:40*	9:15*	9:20*	10:20*

TIBURON – Pier 41			
Weekends and Holidays			
Depart Pier 41	Arrive Tiburon	Depart Tiburon	Arrive Pier 41
9:45 a.m.	10:30 a.m.	10:40 a.m.	11:35
11:45	12:35 p.m.	12:45 p.m.	1:15 p.m.
2:20 p.m.	2:50	3:00	3:40
3:50	4:50	5:00	5:30
5:40	6:35	6:45	7:15
7:25	8:10	8:15	8:45

FARES: One-way Round trip		
Adult	\$10.50	\$21.00
Senior (65+)	\$6.25	\$12.50
Child (5-11)	\$6.25	\$12.50
20 Ticket Commute Book	\$140.00 (Mon. - Fri.)	

Holiday Schedule in effect for: Day After Thanksgiving (Nov 23), & President's Day (Feb 18) **No service** on Thanksgiving Day (Nov 22), Christmas Day (Dec 25), & New Year's Day (Jan 1)

### SAUSALITO

FISHERMAN'S WHARF, PIER 41			
Weekdays			
Depart S.F. Pier 41	Arrive Sausalito	Depart Sausalito	Arrive S.F. Pier 41
10:55 a.m.	11:25 a.m.	11:35 a.m.	12:05 p.m.
12:15 p.m.	12:45 p.m.	12:55 p.m.	1:25
1:35	2:05	2:10	2:40
2:45	3:35	3:45	4:15
4:25	5:25	5:35	6:05
6:15	6:45	6:55	7:25
-----	8:10	8:20	8:35
8:40*	9:30*	9:40*	10:20*

Weekends and Holidays			
Depart S.F. Pier 41	Arrive Sausalito	Depart Sausalito	Arrive S.F. Pier 41
10:55	11:25	11:35	12:05
12:20	12:50	12:55	1:25
2:20	2:50	3:05	3:40
3:50	4:20	4:35	5:30
-----	4:40	4:55	5:30
5:40	6:10	6:20	7:15
7:25	7:55	8:00	8:45

FARES: One-way Round-trip		
Adult	\$10.50	\$21.00
Senior (65+)	\$6.25	\$12.50
Child (5-11)	\$6.25	\$12.50

For the most current schedule, visit <http://www.blueandgoldfleet.com/Ferry/Sausalito/index.cfm>

### ANGEL ISLAND - S.F.

Weekdays (Depart Pier 41)			
Depart Pier 41	Arrive Angel Island	Depart Angel Island	Arrive Pier 41
9:45 a.m.	10:10 a.m.	10:20 a.m.	-----
1:05 p.m.	1:45 p.m.	1:55 p.m.	2:20 p.m.
-----	3:10	3:20 pm	4:15 pm

Weekends & Holidays (Depart Pier 41)			
Arrive Pier 41	Depart Pier 41	Arrive Angel Island	Depart Angel Island
-----	9:45 a.m.	10:10 a.m.	10:20 a.m.
11:35 p.m.	11:45 a.m.	12:15 p.m.	12:25 p.m.
1:15	2:20 p.m.	3:10	3:20
3:40	-----	4:20	4:30
5:30	5:45	-----	-----

ANGEL ISLAND PRICES (Round-trip)			
FARES	S.F. Pier 41 Ferry Bldg*	Alameda/Oakland*	Vallejo*
Adult	\$17.00	\$14.50	\$30.50*
Child	\$9.50 (age 6-12)	\$8.50 (age 5-12)	\$21.00 (ages 6-12)
Child	Free (5 & under)	Free (4 & under)	Free (5 & under)

\* All prices include State Park Fees / Weekend Schedule on Memorial Day (May 25) / Independence Day (July 4) and Labor Day (Sept 7)

### Bay Area Ferry Terminal Locations

**Alameda Ferry Terminal**  
2990 Main Street

**Harbor Bay Ferry Terminal**  
215 Adelpian Way, Alameda

**Larkspur Landing Ferry Terminal**  
101 E. Sir Francis Drake Boulevard

**Oakland Ferry Terminal**  
10 Clay Street @ Jack London Square

**Sausalito Ferry Terminal**  
Humbolt Street & Anchor Avenue

**San Francisco:**  
SF Ferry Building @ foot of Market Street  
Pier 41 @ Fisherman's Wharf

**South San Francisco**  
911 Marina Boulevard

**Tiburon Ferry Terminal**  
Tiburon Blvd. & Main St. in Tiburon

**Vallejo Ferry Terminal**  
289 Mare Island Way in Vallejo

## Red & White

### BAY CRUISE Pier 43 1/2

Monday through Sunday		FARES:
10:00 a.m.	2:30 p.m.	Adult (18+) \$24.00
10:45	3:00	Youth (5-17) \$16.00
11:15	3:45	Child (under 5) Free
12:00 p.m.	4:15	Family Pass \$69.00 (2 Adult + 4 Youth)
1:10	5:00	
1:40	6:15	

*Fun on Ferries, Shoreline Snacking and Shopping, Take the Kids, Bikes on Boats, Fun on Ferries...*



## BAY CRUISE

Depart Pier 39			
Weekdays		Weekends	
10:45 a.m.	4:15 p.m.	10:15 a.m.	3:15 p.m.
12:00 p.m.	5:15	10:45	3:45
1:15	5:45	12:15 p.m.	4:30
2:00	6:30	1:15	5:00
3:00	7:00	1:45	

For the most current schedule, visit [www.blueandgoldfleet.com](http://www.blueandgoldfleet.com)  
Bay Cruise does not operate during inclement weather.

FARES: All prices include audio tour.		
Adult	\$26.00	Child (5-11) \$18.00
Junior (12-18)	\$22.00	Senior (62+) \$22.00

Discount fares available at [www.blueandgoldfleet.com](http://www.blueandgoldfleet.com)

## ROCKETBOAT

### Daily, Monday - Sunday

Depart from Pier 39 Effective May 13, 2013	
12:00 p.m.	FARES:
12:45	Adult \$24.00
1:30	Senior (65+) \$20.00
2:45	Junior (12-18) \$20.00
3:30	Child (5-11) \$16.00
4:15	Holiday schedule on Memorial Day (May 27), Independence Day (July 4) and Labor Day (Sept 3)
5:30	
6:15	

## Angel Island Ferry

### TIBURON – ANGEL ISLAND

Weekdays and Weekends			
Tiburon to Angel Island		Angel Island to Tiburon	
Monday - Friday	10 a.m. 11 a.m. 1 p.m. 3 p.m.	Monday - Friday	10:20 a.m. 11:20 a.m. 1:20 p.m. 3:30 p.m.
Saturday - Sunday	10 a.m. 5 p.m. hourly	Saturday - Sunday	10:20 a.m. 5:20 p.m. hourly

Ferry service by advance reservation for groups of 25 or more. Call (415) 435-2131 to find out if you can "piggyback" with groups

FARES:		Round Trip		(*Limit one free child, ages 2 and under, per paying adult.)	
Adult (13 and over)	\$13.50	Adult (13 and over)	\$13.50	Child (6 - 12)	\$11.50
Child (6 - 12)	\$3.50	Toddlers (ages 2 and under)	Free*	Bicycles	\$1.00

For the most current schedule and other information, visit [www.angelislandferry.com/](http://www.angelislandferry.com/) / Schedule Subject to change w/o notice





# San Francisco Bay Ferry

VALLEJO		
VALLEJO – SAN FRANCISCO		
Travel time between Vallejo and San Francisco is approximately 60 minutes.		
Weekdays		
Depart Vallejo to S.F. Ferry Building	Arrive SF Ferry Building	Arrive Pier 41
5:30 a.m.	6:30 a.m.	-----
6:30	7:30	-----
7:00	8:00	-----
7:45	8:45	-----
10:00	11:00	11:20 a.m.
11:30	12:30 p.m.	-----
2:00 * p.m.	3:20 p.m.	3:00 p.m.
3:20	4:20	-----
4:05	5:05	-----
4:45	5:45	-----
5:45 *	7:05	6:45
Weekends & Holidays		
8:30 a.m.	9:50	9:30 a.m.
10:00	11:00 a.m.	11:20 a.m.
11:30 a.m.	12:30 p.m.	-----
2:00	3:00	3:20
3:30	4:50 *	4:30
5:15	6:15	-----
7:30	8:50 *	8:30
# To Vallejo via Pier 41. * to FB via Pier 41. ** To Vallejo via Ferry Building.		
FARES: One-way		
Adult (13-64)	\$13.00	Call (707) 64-FERRY or visit www.sanfranciscobayferry.com for updated information.
Senior (65+)/Disabled/Medicare	\$6.50	
Child (6-12)	\$6.50	
DayPass	\$24.00	
Monthly Pass (Bus / Ferry)	\$290.00	
w/Muni	\$349.00	

Take the Ferry to GIANTS BASEBALL AT AT&T PARK FROM VALLEJO			
Weekday Day Games 12:45 PM Game Start Times			
Depart Vallejo	Arrive AT&T	Depart AT&T	Arrive Vallejo
11:00 am	12:00 noon	* see below	60 min. later
Weekend & Holiday Games 1:05 PM Game Start Times; Other Start Times**			
Depart Vallejo	Arrive AT&T	Depart AT&T	Arrive Vallejo
11:00 am	12:00 noon	* see below	60 min. later
Weekday Night Games – Return Service Only 7:15 PM Game Start Times			
Return-Only Service	Depart AT&T	Arrive Vallejo	
	*see below	60 min. later	
*Ferry departs AT&T Park 30 minutes after the last out.			
FROM OAKLAND/ALAMEDA			
Weekday Night Games 7:15 & 7:35 pm Games			
Leave Alameda	Leave Oakland	Arrive AT&T	Depart AT&T
6:05 p.m.	6:20 p.m.	6:55p.m.	*see below
ALL WEEKEND & HOLIDAY GAMES 1:05 pm Game Start Times**			
Leave Oakland	Leave Alameda	Arrive AT&T	Depart AT&T
11:30 a.m.	11:50 a.m.	12:20p.m.	*see below
*Ferry departs AT&T Park 20 minutes after last out. ** For Other Weekend and Holiday Game Start Times Visit www.SanFranciscoBayFerry.com/giants			

VALLEJO - ANGEL ISLAND			
Weekends Only			
Depart Vallejo	Arrive Pier 41	Depart Pier 41	Arrive Angel Is.
8:30 a.m.	9:30 a.m.	9:45 a.m.	10:10 a.m.
Depart Angel Is.	Arrive Ferry Bldg	Depart Ferry Bldg	Arrive Vallejo
4:30 p.m.	6:00 p.m.	6:30 p.m.	7:30 p.m.

ALAMEDA/OAKLAND			
Weekdays to San Francisco			
Depart Oakland	Depart Alameda	Arrive S.F. Ferry Bldg.	Arrive S.F. Pier 41
6:00 a.m.	6:10 a.m.	6:30 a.m.	--
7:05	7:15	7:35	--
8:10	8:20	8:40	--
9:15	9:25	9:45	10:00
11:00	10:50	11:30	11:45
1:35 p.m.	1:20 p.m.	2:00 p.m.	2:20 p.m.
2:40	2:25	3:05	3:20
4:45	4:30	--	5:15
5:50	5:40	6:20	--
6:20^	6:05^	--	6:50
6:55	6:45	7:20	--
7:55	7:45	8:25	8:40
8:55	8:45	---	9:25
Weekdays from San Francisco			
Depart S.F. Pier 41	Depart S.F. Ferry Bldg.	Arrive Alameda	Arrive Oakland
--	6:30 a.m.	7:15 a.m.	7:05 a.m.
--	7:35	8:20	8:10
--	8:40	9:25	9:15
10:15 a.m.	10:30	10:50	11:00
12:45 p.m.	1:00 p.m.	1:15 p.m.	1:30 p.m.
1:45	2:00	2:20	2:35
3:45	4:10	4:30	4:45
5:00	5:20	5:40	5:50
5:20	5:40	6:00	6:15
---	6:25	6:45	6:55
---	7:25	7:45	7:55
8:05	8:25	8:45	8:55
^On Giants game days, departure goes directly to AT&T Park instead of Pier 41 from East Bay.			

Harbor Bay Ferry (EAST END OF ALAMEDA/S.F.)			
Weekday Commute			
Depart Harbor Bay Island	Arrive S.F. Ferry Bldg.	Depart S.F. Ferry Bldg.	Arrive Harbor Bay Island
6:30 a.m.	6:55 a.m.	7:00 a.m.	7:25 a.m.
7:30	7:55	8:00	8:25
8:30	8:55	4:35 p.m.	5:00 p.m.
5:05 p.m.	5:30 p.m.	5:35	6:00
6:05	6:30	6:35	7:00
7:05	7:30	7:35	8:00
No weekend or holiday service			
ONE WAY FARES: Regular Clipper			
Adult	\$6.50	\$5.00	
Youth (5-12)	\$3.25	\$3.25	
Children (under 5)	Free	Free	
Disabled / Seniors (62 & over)	\$3.75	\$3.75	
Active Military	\$5.25	N/A	
Commuter (book of 10)	\$55.00	N/A	
Commuter (book of 20)	\$100.00	N/A	
Monthly Pass (book of 40)	\$185.00	N/A	
Free MUNI and AC Transit Transfers Provided			

ALAMEDA/OAKLAND - ANGEL ISLAND				
Weekends Only				
Leave Oakland	Leave Alameda	Arrive Pier 41	Depart Pier 41	Arrive Angel Is.
9:00 am	9:10 am	9:35 am	9:45 am	10:10 am
Leave Angel Island	Arrive Alameda	Arrive Oakland		
3:35 pm	4:10 pm	4:20 pm		
Available May 18 - October 27, 2013				

ALAMEDA/OAKLAND			
Weekends and Holidays to San Francisco			
Depart Oakland	Depart Alameda	Arrive S.F. Ferry Bldg.	Arrive S.F. Pier 41
9:00 a.m.	9:10 a.m.	---	9:35 a.m.
10:40	10:25	11:10 a.m.	11:25
12:30 p.m.	12:15 p.m.	1:00 p.m.	1:15 p.m.
2:15	2:00	2:45 PM	3:00
4:25	4:10	---	4:55
5:55	5:40	---	6:25
7:30	7:15	8:00	8:15
9:10	9:00	9:40	9:50
11:25	11:15	---	11:55
Weekends and Holidays from San Francisco			
Depart S.F. Pier 41	Depart S.F. Ferry Bldg.	Arrive Alameda	Arrive Oakland
8:30	---	9:10	9:00
9:45 a.m.	10:00 a.m.	10:20 a.m.	10:35 a.m.
11:35	11:50	12:10	12:20
1:25	1:40	2:00	2:10
3:15	---	4:10	4:20
5:00	5:15	5:35	5:50
6:40	6:55	7:15	7:25
8:20	8:35	8:55	9:05
10:40	10:55	11:15	11:25
ONE WAY FARES: Regular Clipper Book Book Pass			
Adult (13+)	\$6.25	\$4.75	\$50.00 \$90.00 \$170.00
Youth (5-12)	\$3.50	\$3.50	
Senior (65+)	\$3.10	\$3.10	
Active Military *	\$5.00	N/A	
Child under 5	FREE	FREE	
School Groups*	\$2.00	N/A	
Short Hop**	\$1.50	N/A	
Short Hop Senior	\$075	N/A	
<div style="border: 1px solid black; padding: 5px; text-align: center;">           PURCHASE TICKETS ONBOARD THE FERRY for information (MON. to FRI.) (415) 705 8291         </div>			

\* Restrictions apply, see sanfranciscobayferry.com for details  
 \*\* One-way between Oakland and Alameda or between the SF Ferry Building and Pier 41. Fares subject to change.

SOUTH SAN FRANCISCO		
Weekday to SSF/Oyster Point		
Depart Alameda	Depart Oakland	Arrive SSF
6:30 a.m.	6:40 a.m.	7:15 a.m.
7:30	7:40	8:15
8:00	8:10	8:45
5:10 ** p.m.	4:55 p.m.	5:40 p.m.
Weekday to Alameda & Oakland		
Depart SSF	Arrive Oakland	Arrive Alameda
7:20 a.m.	8:05 a.m.	7:50 a.m.
4:20 p.m.	4:55 p.m.	5:10 p.m.
5:20	6:00 *	5:50
6:20	6:55	7:10
*Boat departs from Oakland first. **Boat arrives Alameda first.		
Wednesday & Friday midday SF service		
Depart SSF	Arrive Ferry Building	Arrive Pier 41
9:00 AM	9:30 AM	9:45 AM
Depart Pier 41	Depart Ferry Building	Arrive SSF
Wed. only 1:50 p.m.	Wed. only 2:05 p.m.	Wed. only 2:40 p.m.
Fri. only 3:15 p.m.	Fri. only 3:30 p.m.	Fri. only 4:00 p.m.
One-way FARES:		
Adult		\$7.00
Youth (5-12 years)		\$3.50
Seniors (65+ yrs), Disabled, Medicare		\$3.50
Children under 5 (with an adult)		FREE
Short Hop2		\$1.50
Short Hop Senior, Disabled, Medicare		\$0.75

# AROUND THE BAY IN JULY

## 4<sup>th</sup> of July Waterfront Fireworks Displays

### San Francisco

PIER 39 Celebrates Independence Day with fun for the whole family, featuring musical entertainment and activities in the Entrance Plaza. Kicking off the afternoon will be WJM, the world's youngest social cause band, from 12 – 2 p.m. Dance into the night from 4 – 7 p.m. with Tainted Love playing all your favorites from the eighties. When the sun goes down around 9:30 p.m., stick around for the City of San Francisco's spectacular fireworks display over the Bay! View from PIER 39, Fisherman's Wharf, Aquatic Park or aboard the *SS Jeremiah O'Brien* (see ad on page 7).

### North Bay

**Sausalito** - 10 a.m. Fourth of July parade followed by celebration at Dunphy Park at noon with live music all day. Food, dancing, family games, tug-of-war and famous traditional egg toss help make this an exciting event for the whole family. The celebration continues as the City of Sausalito Parks and Recreation Department hosts an evening of celebration at Gabrielson Park from 6:30 to 9:30 p.m. The celebration will feature live entertainment and end with a spectacular show of fireworks on San Francisco Bay at 9:20 p.m.

**Marin County Fair** - Fireworks every evening July 3 through July 7 at 9:30 p.m. Concerts, Shangri-La Chinese Acrobats, educational/interactive exhibits, carnival rides, film festivals, arts and crafts, and barnyard features. 10 Avenue of the Flags in San Rafael.

### East Bay

**Berkeley Marina** - Fireworks starts at 9:30 p.m. Live entertainment all day, face painting, arts & crafts, adventure playground, massages, dragon boat rowing, and food from noon to 10 p.m. 201 University Avenue in Berkeley.

### Solano County

**Vallejo (Six Flags)** - Fireworks show, rollercoasters, rides, animal exhibits and picnic in the park. Park open from 10:30 a.m. – 10 p.m. (until 9 p.m. on Sunday). 1001 Fairgrounds Drive in Vallejo.

**Benicia** - Picnic in the Park & Fireworks - Fireworks start around 9 p.m. at the foot of First Street. Arts, crafts, hot food, live entertainment, and children's activities throughout the day from 12 p.m. to 7 p.m. 250 E L Street in Benicia.



### Benicia Waterfront Fest

The popular summer event is back with a splash on Saturday and Sunday, July 27 and 28 from 11 a.m. to 6 p.m., as Benicia

celebrates its picturesque waterfront locale with two days of live music, craft beer tastings, tasty foods, vendor village and kids' activity area. Daily admission is \$10

for adults and \$5 for seniors with children under 12 for free. Adult weekend passes are also available for \$15. For more information and a full listing of musical acts, visit [www.beniciamainstreet.org](http://www.beniciamainstreet.org).

### Jazz in the Fillmore

The Fillmore Jazz Festival returns in 2013 on Saturday, July 6 and Sunday, July 7 from 10 a.m. to 6 p.m. Blending art and soul in one of the country's most unique neighborhoods, the Fillmore Jazz Festival is the largest free jazz festival on the West Coast, drawing over 90,000 visitors each year. From mid-morning to early evening, visitors can groove to the sounds of live music from multiple stages. The Fillmore Jazz Festival offers twelve blocks of music, fine arts and crafts, gourmet food and beverages. Art and crafts include photography, painting, woodwork, metalwork, jewelry, pottery, clothing, hats and children's toys—over 200 artists and craftsmen. Delicious street food includes oysters, calamari, fish & chips, grilled chicken, BBQ pork, jambalaya, tri-tip and grilled shrimp accompanied by fine wine and beer. Fillmore Street, between Jackson and Eddy in San Francisco. Admission is free. For more information and a complete line-up of musical acts, visit [www.fillmorejazzfestival.com](http://www.fillmorejazzfestival.com) or call (800) 310-6563.

### The 13th Annual Breastfest Beer Festival

Northern California's Premier Beer Tasting Event Returns to Fort Mason on Saturday, July 13 from 2 -6 p.m. The Breastfest Beer Festival helps raise funds for the nonprofit health center, Charlotte Maxwell Complementary Clinic, which supports economically challenged women in their fight against cancer. Sample over 70 breweries, several cider houses and

wineries, while getting your groove on to rock and roll party machine Wonderbread 5. Tickets are \$50 in advance at \$60 at the door and can be purchased on the website [www.thebreastfest.org](http://www.thebreastfest.org) or at Marin Brewing Company in Larkspur and Moylan's Brewing Company in Novato. Ticket price includes live music, food, unlimited tasting and a Breastfest commemorative cup. For additional information, call (415) 461-4677.

### Summer Beats Concert Series Returns to Alameda

The popular Summer Beats Concert Series will kick off Thursday, July 4 with tribute rockers Mustache Harbor playing authentic renditions of rock and roll classics from the seventies and eighties. The free, family-friendly concert series showcases many of the area's most notable performers, with musical styles ranging from surf to salsa. After the series' Independence Day debut, the concerts take place every other Saturday, from July 20 through Labor Day weekend. All performances take place in the Center Court from 5 p.m. – 7 p.m. Along with outstanding musical performances, the concert series features fun activities for kids including face painting, henna and glitter tattoos, balloon animals and a bounce house. R&B Wine Cellars will pour some of its most popular vintages for the adults and Peter's Kettle Corn will be on site serving freshly popped treats.

### Globetrotters bring Skills Clinics to the Bay Area

The world famous Harlem Globetrotters bring their unique basketball skills to the Bay Area again this summer. Parents in the Bay Area will be able to enroll kids, ages 6-12, in the Globetrotters' popular Summer Skills Clinics set to take place July 8-13. For six days, Globetrotters will be on-court for two hours each session coaching, motivating and entertaining participating children. This one-of-a-kind summer experience is open to both boys and girls of all experience levels. Registration is \$59 per session and space is limited to ensure a memorable and personal experience for each child. For more information, visit [www.harlemglobetrotters.com/clinics](http://www.harlemglobetrotters.com/clinics).

To have your event or announcement considered for the Bay Crossings Around the Bay listings, please send information or a press release to: [joel@baycrossings.com](mailto:joel@baycrossings.com).

FNOM

friday nights on main 2013

Outdoor Dining • Live Music • Dancing • Main Street, Tiburon • 6 to 9 pm

Tiburon Celebrates Youth America's Cup Team USA 45 Racing **July 26**

Party Tiburon Style!

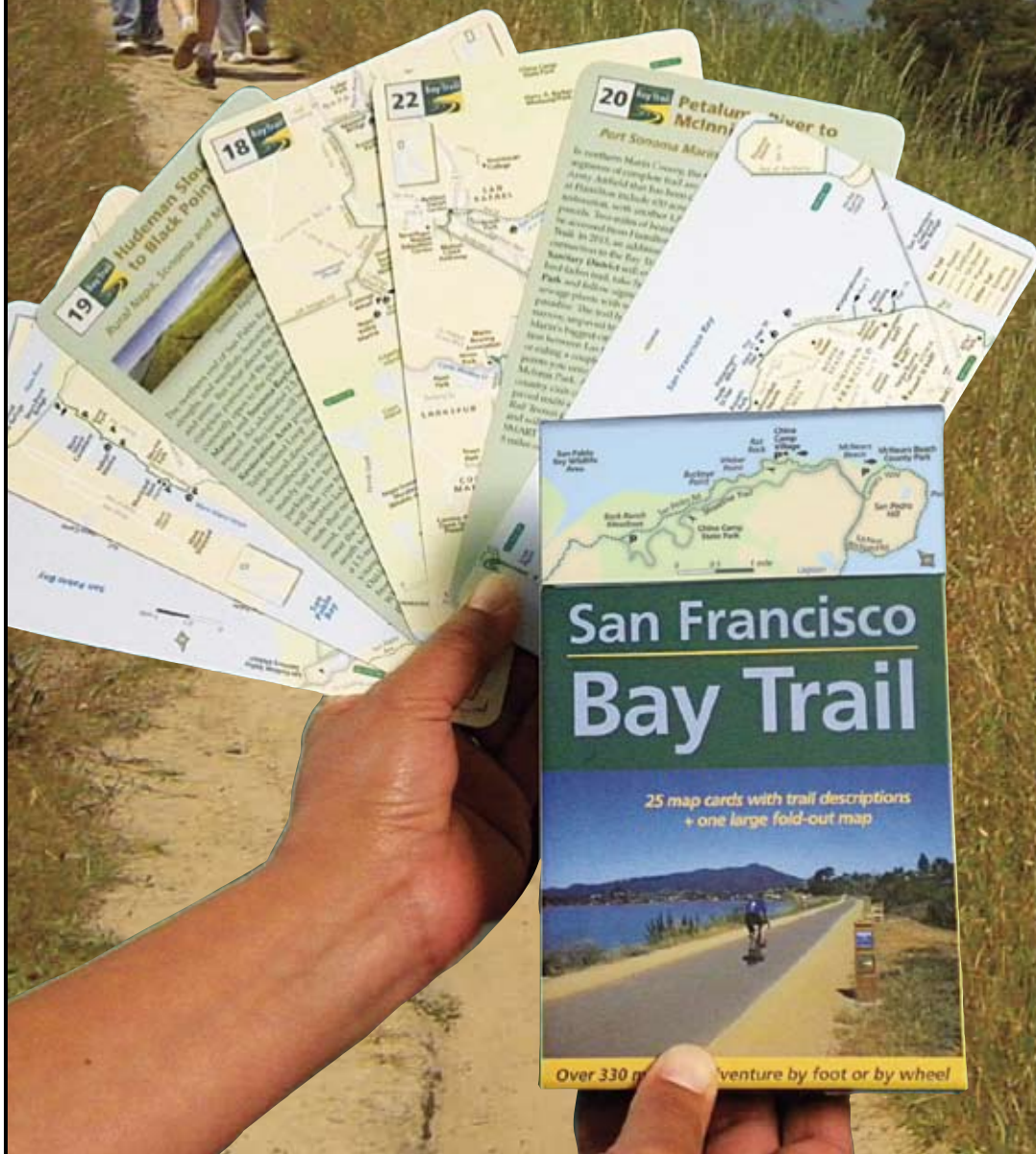
TIBURON BY THE BAY  
OFFICIAL HOME OF  
YOUTH AMERICA'S CUP  
**USA 45**  
RACING

Kyle Martin Band and Youth America's Cup Team USA 45 Racing in attendance.

Late Night Ferry Service to Pier 41 & Ferry Building • Leaves Tiburon at 9:20 pm • [www.tiburonchamber.org](http://www.tiburonchamber.org)

# Put the San Francisco Bay Trail in your pocket...

## With this new boxed set of 25 map cards



*With over 330 miles of trail  
ringing the San Francisco Bay,  
there's a ride or a stroll for  
everyone, from the long-time  
local to the first-time tourist.*

*Available for \$14.95 at  
[baytrail.org](http://baytrail.org), and at the  
Bay Crossings store  
at the S.F. Ferry Building  
and local bookstores.*

# There's no law that says we had to build the best pollutant containment system in the industry...

...but we did. In fact, there are many things that the people of Bay Ship & Yacht have done over the years that have gone above and beyond what was required. Simply because we believe that being the model for the 21st Century shipyard means continually exceeding the level of service and satisfaction demanded by our customers.

Which is why we implemented a "Best Practices" pollution management system that ensures that procedures are written to the highest-possible standard. Which is why we installed a sophisticated drainage system under the entire yard, to capture any pollutants and process them in a separate tank farm containment area. Why we switched out all diesel-fuel compressors to electric. Not required by law, but



we did it anyway. And to prevent a calamity from happening, we took the extraordinary step of installing storm water separators and isolation valves that can be rapidly shut off, thus preventing a continuous run-off of pollutants into the Bay.

It's because we set our standards higher than others that we have emerged as a leading shipyard, not only among the commercial, historical and military communities, but also among those seeking new construction and repair of super-yachts.

We take a long-term view of the future, and to maintain our position at the forefront of the industry, we've invested heavily in facilities, processes and proven technologies. Our customers expect nothing less of us, which is why they keep returning to Bay Ship & Yacht.

== *We are the 21st Century Shipyard* ==



2900 Main Street, #2100 • Alameda, CA 94501 • [www.bay-ship.com](http://www.bay-ship.com)