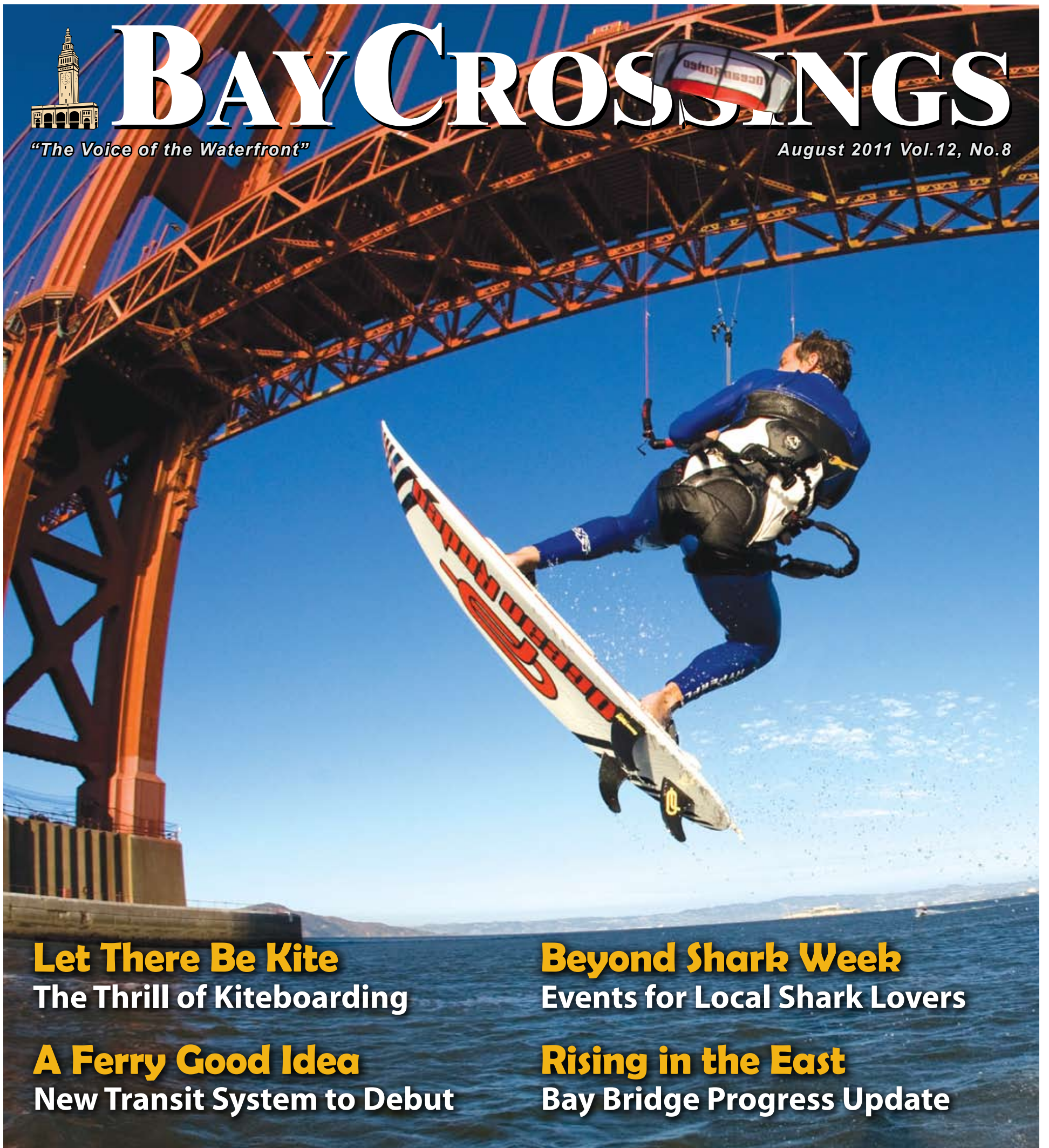




BAY CROSSINGS

"The Voice of the Waterfront"

August 2011 Vol.12, No.8



Let There Be Kite
The Thrill of Kiteboarding

A Ferry Good Idea
New Transit System to Debut

Beyond Shark Week
Events for Local Shark Lovers

Rising in the East
Bay Bridge Progress Update

Complete Ferry Schedules for all SF Lines

VALLEJO COMEDY

FRIDAY, AUGUST 26TH

8 PM

FEATURING
CARLOS ALAZRAQUI

~@~
THE

**FETTERLY
PLAYHOUSE**

VOICE OF ROCKO ON NICKELODEON'S
"ROCKO'S MODERN LIFE"

STARRED AS
DEPUTY JAMES GARCIA
ON "RENO 9-1 1!" AND
THE FEATURE FILM
"RENO 9-1 1!: MIAMI"



VOICE OF THE
TALKING
TACO BELL
CHIHUAHUA

3467 SONOMA BLVD. #10
VALLEJO, CA

TICKETS ~ \$15
\$10 w/
STUDENT ID

DIRECTIONS &
INFORMATION:



www.VALLEJOCOMEDY.COM

Artists subject to change.

FEATURED IN HIS OWN HALF-HOUR "COMEDY CENTRAL PRESENTS" TV SPECIAL



FREE SHUTTLE FOR FERRY RIDERS!



We'll bring you to the Vallejo Ferry Terminal in the morning and pick you up at the end of the day when your car is ready!

SPECIALIZING IN

Service & Maintenance • 30/60/90K Service
All Insurance Work • Collision Repair • Engines & Transmissions
Electrical • Air Conditioning • Tune-ups & Brakes
Change Engine • Light Diagnosis & Repair



\$20 off of oil change

20% off Labor



(707) 645-1909

1416-A Sonoma Boulevard in Vallejo

Great food to celebrate life in the City!

Enjoy a ten minute walk from the Ferry Building or short hop on the F-Line



Crab House at Pier 39

X Voted 'Best Crab in San Francisco'

- Sizzling Skillet-roasted Mussels, Shrimp & Crab
- Romantic Cozy Fireplace
- Stunning Golden Gate Bridge View

Open Daily 11:30 am - 11 pm
2nd Floor, West Side of Pier 39
Validated Parking

crabhouse39.com 415.434.2722

FRANCISCAN CRAB RESTAURANT

- Whole Dungeness Crab
- Breathtaking Bay Views
- Bay side of Historic Fisherman's Wharf

Open Daily 11:30 am - 11 pm
Pier 43 1/2
Validated Parking

415.362.7733

franciscanrestaurant.com



Rosenblum CELLARS.

EXPERIENCE THE ORIGINAL URBAN WINERY

Enjoy one of our event series

- **ZIN CAFÉ: Fridays, 6:30pm to 9:30pm:**
Zinfanatics can commingle with fellow fans of our robust reds at Zin Cafe, our evening pairing of area musicians, light snacks and great Rosenblum Cellars wines by the glass. Starting on July 8th, Zin Cafe will be each and every Friday! Admission is \$10 (complimentary for Club Members) advance tickets can be purchased in the Tasting Room.
- **REGIONAL WINE SERIES: Saturdays, 12pm to 5pm:**
Did you know that Rosenblum produces over 40 wines? Every Saturday this Summer, we will be introducing them all to you, region by region. Activities will include vertical wine tastings, educational classes and barrel samplings! In August, we will be featuring wines from Sonoma County.
- **HOT AUGUST DAYS: Sundays, 1pm to 5pm:**
Every Sunday in August, a local car club will be showcasing their best cars. Be prepared to be awed by hot rods, corvettes and many other vehicles that you just don't see everyday. Vote you're your favorite and you may win a ride on one hot August night.
- **MUSIC ON THE DECK: Sundays, 2pm to 5pm:**
Our tasting room experience expands outdoors with a new Sunday afternoon live performance series, Music on the Deck. Sample wine by the glass and listen to the tunes of Oakland's Simon Russell Project on our deck, a spiffy, shaded outdoor entertainment and lounging space just a dance step away from our newly remodeled tasting room and the San Francisco ferry dock.

Mark your calendar this August

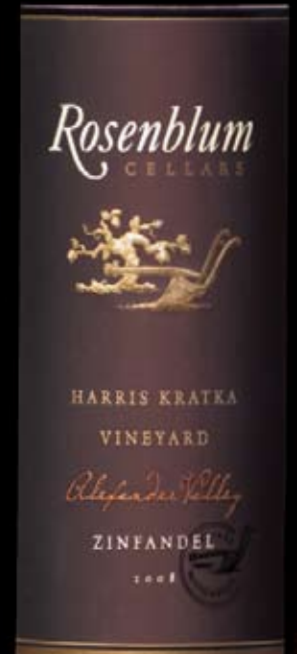
- **LADIES NIGHT OUT: Thursday, August 18th, 6:30pm to 9:30pm:**
Looking for a place to catch up with your girlfriends? Join us at Rosenblum for an evening dedicated to our local ladies. Enjoy music, light snacks and our acclaimed wines available by the glass. Admission is \$10 (complimentary for Club Members) advance tickets can be purchased in the Tasting Room.

www.rosenblumcellars.com

2900 Main St. Suite 1100
Alameda, CA p: 510-995-4100

Located in Alameda, just
minutes from San Francisco.

TASTING ROOM OPEN DAILY
FROM 11AM TO 6PM



facebook



twitter

Please enjoy our wines responsibly.
© 2011 Rosenblum Cellars Alameda, CA 94501
www.DrinkIQ.com

BAYCROSSINGS

"The Voice of the Waterfront"

columns

- 10 BAYKEEPER**
Common Murres Make
Bay Area Comeback
by **Deb Self**
- 11 IT CAME FROM
BENEATH THE SEA**
Beyond Shark Week
by **Kati Schmidt**
- 12 SAILING ADVENTURES**
Unexpected Bay Vistas
by **Captain Ray**
- 19 CULTURAL CURRENTS**
Quiet Diversions
by **Paul Duclos**

features

- 13 EXTREME SPORTS**
Discovering the Thrill of
Kiteboarding on the Bay
by **Kira Detko**
- 14 GREEN PAGES**
Target to Bring Green
Commitment to Proposed
New Bay Area Stores
by **Bill Picture**

news

- 04** Progress Continues on
Bay Bridge East Span
- 06 WATERFRONT NEWS**
Oakland's Ports to
Expand Global Reach
by **Patrick Burnson**
- 07** New Bay Area Ferry
System Set to Debut
by **Wes Starratt PE**
- 08** In Search of 'Ferry Killers'
by **Joel Williams**
- 16 AMERICA'S CUP**
AC World Series Begins
- 17** Outside Lands Festival at
Golden Gate Park
- 18** Fitness and Cycling Come
to Jack London Square
- 22** Treasure Island Offers
New Shopping Experience
- 23** Call of the Sea Expands
Horizons for Youth



guides

- 20 WATERFRONT ACTIVITIES**
Our recreational resource guide
- 24 WETA FERRY SCHEDULES**
Be on time for last call
- 26 AROUND THE BAY**
To see, be, do, know



Kiteboarding is an extreme sport that combines wakeboarding, windsurfing, surfing, paragliding and gymnastics. A kiteboarder uses a board with or without foot-straps or bindings, combined with the power of a large controllable kite, to propel the rider and the board across the water. In our feature on page 13, Kira Detko describes her experiences learning how to navigate this difficult but rewarding sport.

Rider: Erin Loscocco www.Loscocco.com

Photographer: Peter Lyons www.LyonsImaging.com

Corrections & Letters

We appreciate the opportunity to publish our readers' comments, letters or requests for corrections, which can be sent to joel@baycrossings.com.

BAYCROSSINGS

August 2011 Volume 12, Number 8

Bobby Winston, Proprietor
Joyce Aldana, President
Joel Williams, Publisher
Patrick Runkle, Editor

ADVERTISING & MARKETING

Joel Williams, Advertising & Marketing Director

GRAPHICS & PRODUCTION

Francisco Arreola, Designer / Web Producer

ART DIRECTION

Francisco Arreola; Patrick Runkle; Joel Williams

COLUMNISTS

Captain Ray Wichmann;
Paul Duclos; Patrick Burnson;
Kati Schmidt; Deb Self

WRITERS & PHOTOGRAPHERS

Bill Picture; Joel Williams; Wes Starratt; Kira
Detko; Craig Raphael; Haley Chutz

ACCOUNTING

Cindy Henderson

Advertising Inquiries:

(707) 556-3323, joel@baycrossings.com

Bay Crossings SF Ferry Building Store

(415) 362-0717,

Clipper customer service center

(877) 878-8883

For Transit Information – Dial 511

Bay Crossings

Ferry Building, #22

San Francisco, CA 94111

www.baycrossings.com

A Division of Nematode Media, LLC

Cable Saddle and Catwalks Mark Progress on East Span

BY CRAIG RAPHAEL

It's been a busy few months for the new East Span of the Bay Bridge.

In late May workers successfully hoisted the "world's largest cable saddle" atop the self-anchored-suspension (SAS) portion of the span. With a flat base and curved top, the 450-ton cable saddle is engineered so that the nearly mile-long single cable can pass over the tower twice.

Unlike traditional suspension bridges, the cable of an SAS bridge anchors into the roadway, rather than the ground. Starting at the bridge's eastern end, the cable will travel up and over the saddle to wrap around the west end before traveling back up and over the tower to anchor into the east end again.

The structural elements of the main tower are now complete with the saddle in place. Just shy of its 525-foot apex, the

signature tower will be crowned with a decorative head once the cable is installed early next year.

In a sign of further progress, orange catwalks have been erected to help workers install the bridge cable safely. Two 600-foot-long catwalks are currently on the Yerba Buena Island side of the tower and will be followed by additional catwalks on the opposite side later this summer.

Workers travel up and down the catwalks using harnesses to make preparations for cable installation. Soon they will build a frame to support the weight of the cable while it is being installed. The frame will also help guide placement of the cable, which will be strung just above the catwalk.

Workers use great caution as they traverse the catwalks, which are placed at a steep 35-degree angle at their highest point. Made out of wire mesh panels, the catwalks may look delicate,



A pair of 600-foot-long catwalks stretch from the East Span tower down to the road decks below.



Bill Hall, Caltrans

but they actually weigh 16.5 tons each!

The new East Span is on track for completion in late 2013. The bridge is a key element in a seismic upgrade program overseen by the Toll Bridge Program Oversight Committee, made up of Caltrans, the Metropolitan

Transportation Commission's Bay Area Toll Authority and the California Transportation Commission.

For more information on the new East Span of the Bay Bridge, visit baybridgeinfo.org



Bill Hall, Caltrans



Bill Hall, Caltrans

The "world's largest cable saddle" is lifted to the top of the new East Span tower (left) some 500 feet above the Bay. Next, the 450-ton saddle is positioned just above the tower (right), where workers prepare to lower it into place. The signature tower will be crowned with a decorative head once the cable is installed early next year.

America's Cup Race Course Preview and Bay Bridge Cruise ABOARD THE SS JEREMIAH O'BRIEN

Saturday, August 27, 2011 Boarding begins 8:00am,
Departs 9:00am, Returns 2:00pm



America's Cup fans... You've heard of the AC45 and the AC72. Come cruise with us as we sail America's Cup racetrack, and be the first to cross the finish line in a JO'B441. You will even be awarded an appropriate medal.

As a bonus, we will take a victory lap to view what will prove to be the Bay Area's next architectural marvel - the new Bay Bridge - as few people have seen, or will see, her. A bridge expert will be with us to explain its construction and progress.

Tickets include:

- Continental breakfast
- Delicious lunch served on the main deck at noon
- Live music
- Beverages
- Tour of the engine room, as seen in the blockbuster hit "Titanic"

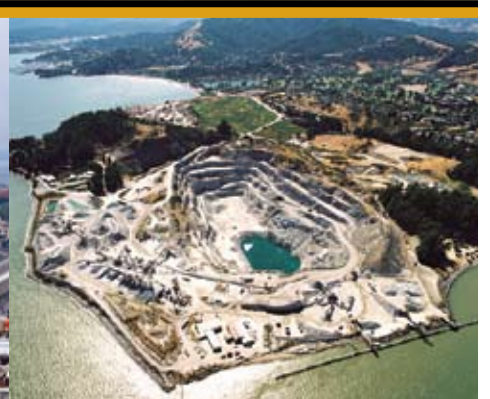
Tickets are \$95 Adults, \$50 Children, \$250 Family (2 Adults and 2 Children)
Order now at www.ssjeremiahobrien.org or call (415) 544-0100



**West Coast Leaders in Aggregates, Dredging
& Marine Construction Services**



The Dutra Group is made up of four distinct but integrated companies supplying turn-key, one-stop services to those who want to work with an industry leader.



Dutra Materials' primary source of aggregate is strategically located in one of the fastest growing areas in the Western United States.

Dutra Marine Construction provides the expertise and required resources to build in a multitude of marine environments.

Dutra Dredging supports a wide range of customers from governmental agencies to private industry members.

Dutra Equipment provides 24/7 equipment maintenance and capital repairs for the Dutra companies and their valued customers.

Call 415-258-6876 or visit our website at www.dutragroup.com

Oakland's Seaport and Airport to Extend Global Reach

BY PATRICK BURNSON

Oakland International Airport has requested and received authorization by United States Customs and Border Protection to offer nonstop charter passenger service between the Bay Area and Cuba. It is the only Bay Area airport to hold the designation, and flights to Cuba from Oakland will be the first to bridge the Bay Area and the small island nation.

Oakland Airport has partnered with California-based travel company Cuba Travel Services (CTS). CTS expects to begin offering charters for sale to the

public beginning in late summer for flights commencing as soon as year-end 2011. "We expect the demand for travel to Cuba from the Bay Area to increase substantially over the next year, and CTS is poised and honored to bridge Oakland and Havana," said Michael Zuccato, General Manager of CTS and a Pleasanton native.

Congresswoman Barbara Lee, who has been a catalyst for the effort to increase ties between the Bay Area and Cuba, noted the significance of this announcement: "This new charter is another important step in moving beyond the outdated policies of the past and turning to a new, productive page in U.S.-Cuba relations that hopefully will lead to more travel and exchange

with Cuba. I have always believed that people-to-people diplomacy is one of the most effective ways for strengthening ties between two nations. I am hopeful that today's announcement will lead to many more Bay Area residents taking advantage of the opportunity to directly engage with the Cuban people."

"We applaud President Barack Obama and our congressional leadership for loosening restrictions and facilitating U.S. travel between the Bay Area and the beautiful Caribbean island of Cuba," said Port Board President James Head. "Offering regular air service eliminates borders and enables Cuban-Americans, businesses and organizations with purposeful travel from the Bay Area to fly to Cuba through Oakland International Airport."

"The Bay Area is home to many world class universities as well as community organizations that will benefit from this approval," said Deborah Ale Flint, Director of Aviation for the Port of Oakland. "We are pleased to be the San Francisco Bay Area's designated airport to offer easy access to and from Cuba," she continued.

The decision to allow airports to schedule flights to and from Cuba is part of a broad effort to reach out to the Cuban people for academic, religious, humanitarian and news-gathering purposes as announced by President Obama in January 2011. Prior to this, charter flights to the island nation were only allowed from Los Angeles, Miami and New York-JFK.

AAPA and ITA Agree to Support National Export Initiative

Just as U.S. exports are ramping up comes news that the American Association of Port Authorities (AAPA) and the U.S. Department of Commerce's International Trade Administration (ITA) have signed a Memorandum of Intent (MOI) at the Port of Oakland.

This MOI implements the "Partnership with America's Seaports to

Further the National Export Initiative (NEI)" and supports President Obama's goal of doubling exports, which was announced during his State of the Union speech in 2010. Under the agreement, ITA and AAPA will partner to coordinate communications, idea exchanges, activities and services that assist U.S. businesses in exporting; and to increase awareness of the available services, trade missions, programs and overseas events that involve U.S. export opportunities.

The Port of Oakland is the major U.S. West Coast outbound ocean cargo gateway for exports. "Adjusting for inflation, California's export trade is as robust as it was prior to the recession," Jock O'Connell, Beacon Economics' International Trade Adviser, said in an interview.

Signatories to the MOI include Francisco J. Sánchez, Under Secretary, International Trade Administration, United States Department of Commerce and AAPA President and CEO Kurt Nagle.

"AAPA and the Department of Commerce share a strong interest and commitment to increasing trading opportunities for U.S. products abroad," said Kurt Nagle, AAPA president and CEO. "We believe a collaborative approach between Commerce and America's seaports is the best way to ensure the success of this important national initiative."

Nagle emphasized that achieving the President's goal requires both helping our exporters and improving our transportation infrastructure. "As recognized by the Export Promotion Cabinet in their report to the President on the NEI, we must improve our transportation infrastructure to fully realize the potential gains from the NEI and to sustain U.S. international competitiveness," said Nagle. "This partnership and investments in infrastructure will pave the way towards a prosperous future for all Americans."

ALAMEDA | OAKLAND FERRY

IS CHANGING IT'S NAME TO



San Francisco Bay Ferry

Same great service between Oakland's Jack London Square, Alameda Main Street, SF Ferry Building and SF Pier 41.

Seasonal service to AT&T Park for Giants and Cal games and Angel Island State Park.

510.749.5837 | www.eastbayferry.com

www.sanfranciscobayferry.com

NEW FERRY SYSTEM TO LAUNCH ON SAN FRANCISCO BAY

BY WES STARRATT PE

It is transition time at the Water Emergency Transportation Authority (WETA). Earlier this year, two existing ferry services—Alameda/Oakland and Harbor Bay—were transitioned to WETA. WETA is also currently working with the City of Vallejo on the transition of Vallejo’s Baylink ferry system. With the construction of a new ferry terminal at Oyster Point in South San Francisco, the new future route between the East Bay and South San Francisco will culminate the short-term transition for WETA’s growing responsibilities.

In the long term, WETA is planning ferry services to San Francisco from as far away as Antioch in the Delta and Redwood City in the South Bay. The City of Berkeley will most likely be the home of the next new ferry terminal. WETA (and its predecessor the Water Transit Authority) have been building the foundation for a regional ferry system since its creation by the state legislature in 1999.

While WETA is the entity responsible for operating the consolidated ferry services, at its July meeting the WETA Board of Directors decided to give the growing system a more recognizable name. Commuters, tourists, the transit community and the general public will soon know WETA’s regional ferry system as SAN FRANCISCO BAY FERRY.

“Over time, we hope that our new name and graphic identity will become instantly recognizable and promote the use of our services,” said Nina Rannells, executive director of WETA. Another significant milestone for WETA is to engage an experienced operator for the day-to-day running of the San Francisco Bay Ferry system. Earlier this year, the WETA Board issued a Request for Proposals (RFP) for the operation and maintenance of the system. Proposals have been received, and the WETA board is expected to select an operator for the new service at an upcoming meeting.

Upgrading the Existing Fleet

In the meantime, some of the vessels used for services are reaching “mid-life” and, as a consequence, are requiring re-powering and refurbishing.

Last year, the *Bay Breeze* from the Harbor Bay service was dry-docked at Bay Ship & Yacht in Alameda for replacement of the main engines; WETA will issue a RFP to complete the mid-life refurbishment. The vessel’s passenger cabin, major systems and navigation electronics will be renovated.

For the Vallejo’s Baylink service, one of the ferries is at Nichols Brothers in Washington State for refurbishing, with a second vessel to follow.

Building New Vessels

With plans to build several new terminals and expand service, there is a need for new ferry vessels. “Plans for more ferries are



WETA/M-Line

Soon ferryboats looking like the rendering above for the new San Francisco Bay Ferry will be seen on services to Alameda, Oakland and Harbor Bay with Vallejo and South San Francisco to follow.

couple of years out, and we will be looking at larger capacity ferries than the 149 passenger vessels recently built.” There is a lot going on as the San Francisco Bay Ferry is born; watch for more news in the near future.

“We have already built two boats for South San Francisco and our next boats are likely to be for proposed new services from Berkeley or Richmond currently under development. But that may be a

WE PROMISE TO EARN THE RIGHT TO BE YOUR DENTAL OFFICE FOR LIFE

MARINA VISTA DENTAL

Over 25 Years Serving Our Community

Cosmetic and Family Dentistry

YOU WILL SEE THE DIFFERENCE • RELAXING WATERFRONT LOCATION

CEREC®
One-visit dentistry

Open 8AM - 5PM
Tuesday - Friday

New Patients Welcome

David K. White, D.D.S.
Kevin B. Duquette, D.D.S.

(707) 552-2228

Conveniently Located Next to the Vallejo Ferry Terminal
285 Mare Island Way, VALLEJO • MarinaVistaDental.net

Just Published...

Flags of Convenience
A Novel

Paul Duclos

Available Now at the Bay Crossings Store

Call 1-800-AUTHORS to order, or visit www.iUniverse.com

In Search of “Ferry Killers”

BY JOEL WILLIAMS

When a 50-foot tree is found floating in the Bay, just waiting to ruin someone’s day, it’s not a simple job to remove it. But thanks to the Army Corps of Engineers, there is a solution.

If not removed, floating and partially submerged obstacles can cause catastrophic damage to ferryboats and other vessels traveling on the Bay. *Bay Crossings* was recently invited to ride along on the newly acquired Army Corps of Engineers derrick vessel *John A.B. Dillard Jr.*—named after Major General John A.B. Dillard (1919-1970), whose helicopter was shot down in Vietnam—to see firsthand this unique patrol, which has the primary mission of picking up debris.

We’re not talking about scooping up the small items of garbage that you may occasionally see floating around in the water; *Dillard* is equipped with a deck crane capable of lifting 15 tons. The main focus of *Dillard* is to search for what they call “ferry killers,” or large items that “roll right through your screws and take ’em right on out,” as Captain Kixon B. Meyer vividly describes.

One of the “ferry killers” that Captain Meyer is referring to is the

dreaded “deadhead”—and he was not talking about the fans of the Grateful Dead. Deadheads are large wooden posts or trees that hang vertically in the water with only the top exposed. Sometimes these can be in excess of 40 feet long and, frequently, the other end has become embedded in the muddy floor of the Bay, leaving the deadhead poised to spear and completely destroy a vessel unfortunate enough to run into it head-on.

Ferry killers found in the Bay generally originate upstream from the Sacramento River. According to Captain Meyer, “It’s really odd because typically this time of year we’re not getting much, but with all of the runoff we’re getting a lot of trees.” Other similar hazards come from deteriorating pier pilings, which can be seen all around the Bay. In just the four hours that I tagged along with the five-man crew of the *Dillard*, we saw old dilapidated piers falling apart in Vallejo, Crockett and Richmond.

Dillard can travel at around 30 knots, which is a significant upgrade from its counterpart, the 1940s-era *Raccoon*, which only has a top speed of 8 knots. This allows *Dillard* to react much more quickly than previously possible. For instance, if *Dillard* is removing something from around the Mare Island Strait in Vallejo and it gets a call regarding a hazard in Alameda, it can be there in about an hour as opposed



Photo by Kixon Meyer

The crew onboard *Dillard* removes a large tree from the Bay. The attached crane can lift up to 15 tons.



A “deadhead” is a large wooden post or tree that hangs vertically in the water with only the top exposed (left). Only after the crew worked this obstacle loose from the muddy bottom and removed it could the actual size of the hazard be seen (right).

to almost four hours for *Raccoon*. *Dillard* also has offshore capabilities that *Raccoon* does not, allowing *Dillard* to operate outside the Gate. *Raccoon* still provides a much needed service though as it has a larger crane capacity and is needed to remove some obstacles like abandoned boats that *Dillard* cannot handle. Currently the territory assigned to *Dillard* runs from Crescent City down to Monterey as well as the entire Bay Area, Delta and areas of the Sacramento and San Joaquin Rivers.

When not going after a specific target that has been called in, *Dillard* is patrolling areas that are known to collect debris so it can be removed before drifting into areas where it can become a hazard to navigation. The average daily haul this year has been

3.7 tons, which indicates the surprising need for such a vessel to protect the waterways in the Bay.

The secondary mission of *Dillard* is as a command platform for emergency rapid response as well as for oil spill and pollution response. *Dillard* can also be called upon for initial on-scene search and rescue or dive and survey operations.

Individuals are encouraged to contact the Army Corps of Engineers at (415) 289-3000 to report large debris floating in the Bay. If you notice something during normal business hours, you can actually call Captain Meyer directly at (510) 590-8181 or VHF-FM Channel 16 on a shipboard radio. On weekends and evenings it is best to contact Coast Guard Sector San Francisco at (415) 399-3530 or VHF-FM Channel 16.



Photo by Joel Williams

Dillard is almost 90 feet long with a draft of 6 feet and a maximum speed of 30 knots.



SEASON TICKETS START AT \$26 PER GAME



1.800.RAIDERS.COM

Common Murres On the Comeback Trail

BY DEB SELF

Every time I write this monthly column, I find that I have to dive deep into a whole new world of chemistry, species, habitat, geology and climate. I enjoy sharing a little bit of what I learn along the way.

Some of you know I'm a novice birder, having become captivated with diving ducks while helping Golden Gate Audubon Society with its Christmas bird count out on the Bay. I love to see the fancy patterns of buffleheads and common goldeneyes and have enjoyed watching the western grebes on the central Bay into the spring. This July, however,

I was struck by the sight of birds I had never noticed before.

Out on the Baykeeper boat last month, I spied about a dozen common murres, floating and diving in the deep water channel between the Golden Gate and Raccoon Strait. Looking a bit like (but unrelated to) penguins, these are the black and white beauties that grace rocky coastal headlands during the nesting season that runs from March through July.

These seabirds winter on the open ocean, foraging for small fish along the edge of the Continental Shelf near the Farallon Islands. In California, the major breeding colonies, or loomerries, are on the Farallon Islands, Pt. Reyes headlands and Devil's Slide Rock.



Photo courtesy of 1000birds.com

Common murres look like but are unrelated to penguins. 2010 proved to be a robust year for the species after years of severe decline due to commercial eggging, oil spills and overfishing.

Common murres are elegant and striking; Baykeeper volunteer and avian ecologist Bridget Gruel says she thinks of them as the Sophia Loren of birds. Born in a fancy blue or green speckled egg on a rocky cliff, common murres lead an adventurous life right from the start. The parents, who have only one chick at a time, memorize the pattern on their single egg and take turns incubating it. About 20 days after hatching, long before it can even fly, the chick will leap from its ledge into the water far below—sometimes from as high as 1,500 feet!

Over the next two weeks, the chick learns from the adult male how to swim and forage and, eventually, (unlike penguins) how to fly. Murres are adept swimmers, diving regularly to 200 feet—and occasionally more than 500 feet—in pursuit of juvenile rockfish, anchovies, smelt and squid that are small enough to be swallowed by the murre chicks.

The California populations of common murres had seen a severe decline due to commercial eggging, oil spills and overfishing. After nearly 40 years of studying common murres on the Farallon Islands, however, PRBO Conservation Science reported that 2010 proved to be a robust year for common murres. A good year for rockfish reproduction seems to have translated

into breeding success by the murres. Hopefully, common murres are making a true comeback—though the effects of climate change on ocean temperature and forage fish may be a steep hurdle.

If you're lucky, you might see common murres at Point Reyes, Devil's Slide Rock or even on the water, following schools of rockfish and anchovies into San Francisco Bay. But be sure to stay back at least 300 yards, whether on kayak, sailboat or foot, to keep from stressing this recovering species. To learn more about Baykeeper's work to protect the Bay, or to share what you would like to know about the Bay, visit www.baykeeper.org or contact Deb at deb@baykeeper.org.



From the Sausalito Ferry, take a left, two blocks south.

SCOMA'S
SAUSALITO

588 BRIDGEWAY 415.332.9551 SCOMASSAUSALITO.COM

Deb Self is Executive Director of San Francisco Baykeeper, which uses science and advocacy to enforce clean water laws and hold polluters accountable.

Deb has 25 years of experience in environmental advocacy and non-profit management, and enjoys paddling the Bay and walking its shorelines.





Beyond Shark Week: Choose Your Own Shark Adventure

BY KATI SCHMIDT

The Discovery Channel's most popular week of programming, Shark Week, is already in full swing—or bite—as the month begins.

While it is nearly impossible to deny yourself time in front of the tube—especially when the “Chief Shark Officer” is Bay Area native and international celebrity Andy Samberg—a little dose of reality goes a long way. The lineup is often heavily slanted with “blood in the water”-style encounters at a time when fascination and, most importantly, protection is needed for the animals.

With a series of special events taking place at Aquarium of the Bay and within the community, there are plenty of opportunities to get off the couch and fill your calendar with the wonder and awe-inspiring beauty of sharks. So choose your own shark adventure, with the below options—bonus points for choosing to participate in all of them!

Option #1: Family Sleepover at Aquarium of the Bay

No need to pinch yourself—you really will be sleeping with Sevengill sharks and other native species in the Aquarium's exhibit tunnels, during our once-a-year Family Sleepover. The sleepover includes naturalist-led tours of the exhibits and special hands-on opportunities. Following a morning breakfast, guests will have the unforgettable opportunity of feeding leopard sharks, bat rays and others their morning meal! Tickets will sell out for this event, so contact Mayra Rivas at (415) 623-

5376 or visit www.aquariumofthebay.org to learn more and reserve your space.

Option #2: The “Other” Shark Week at Aquarium of the Bay

Focusing on the wonder of sharks instead of the televised carnage seen on TV, Aquarium of the Bay is hosting a fin-tastic lineup of daily and special events from August 1 through August 7. Don't miss special presentations in the “Shark Lab,” scavenger hunts and special giveaways, while getting up close with San Francisco Bay sharks. Visit www.aquariumofthebay.org for the full lineup.

With a series of special events taking place at Aquarium of the Bay and within the community, there are plenty of opportunities to get off the couch and fill your calendar with the wonder and awe-inspiring beauty of sharks.

Option #3: Sharks on Film at the San Francisco Main Library

Don't miss a free and special evening of sharks on film—minus the blood and guts—on Tuesday, August 2 at San Francisco Main Library's Koret Auditorium. From 6–8 p.m., films including the award-winning *Requiem* and KQED QUEST's *Meet the Man in the Grey Suit*, among others, will be

screened. KQED QUEST producers will be on hand to discuss their work, as well as Aquarium of the Bay's Animal Care team. Visit www.sfpl.org to learn more about the event.

Option #4: Aquarium of the Bay Launches New Feed the Sharks Tour

With the launch of its “Feed the Sharks Tour,” Aquarium of the Bay guests have the unique opportunity to become aquatic biologist insiders, feeding a variety of sharks, rays, skates and other fishes their afternoon meal. Each tour participant will receive a bucket of seafood to feed to sharks, rays,



Photo courtesy of Aquarium of the Bay

You can choose your own shark adventure this month with events taking place at Aquarium of the Bay and the San Francisco Main Library.

skates and other fishes in one of the Aquarium's 350,000 gallon tunnel exhibits. Participants will also try their hand at aquatic biology, testing the pH and oxygen levels of San Francisco Bay water in the Aquarium's research lab. Naturalists will guide guests through the catwalk over the Aquarium's exhibit tunnels and allow them to view animals not on exhibit, like tiny baby jellies, sharks and other animals in the behind-the-scenes nurseries. The “Feed the Sharks Tour” is offered each Tuesday, Thursday and Sunday at 2:30 p.m. Visit www.aquariumofthebay.org to reserve your space.

Kati Schmidt is the Public Relations Manager for Aquarium of the Bay and The Bay Institute, nonprofit organizations dedicated to protecting, restoring and inspiring conservation of San Francisco Bay and its watershed. A Bay Area native and aspiring Great American novelist, Kati enjoys the professional and personal muses found from strolling and cycling along, and occasionally even swimming in San Francisco Bay and beyond.



Sharing time with whales is a privilege.



415-331-6267

www.sfbaywhalewatching.com

Unexpected Bay Vistas

BY CAPTIAN RAY

The beauty of San Francisco Bay can be enjoyed from many places. We've all seen photos or actually enjoyed the views from the top of Coit Tower on Telegraph Hill, the Vista Point in Marin County, or from the pedestrian walkway on the Golden Gate Bridge. It's likely you're reading this from one of the area's best vantage points: a ferry crossing the Bay. But, I'd like to share some unusual vista points—unexpected, unheralded spots that provide wonderful and unique views of this very beautiful area.

One of these serendipitous spots is the pedestrian bridge connecting Pier 39 with its parking garage. Recently, I was walking from the parking structure toward Aquarium of the Bay. Coming out of the garage onto the bridge, I was looking east and could see a bit of the Berkeley Hills. However, as the bridge turned left to cross over the Embarcadero, the Bay was laid out before me: Alcatraz, Angel Island, the Marin Headlands and Mount Tamalpais all shining in the sunlight! This view came as a complete (and very pleasant) surprise.

Another of these little gems is in the East Bay. We've all seen it, that funny little hill with the trees on it, east of

I-80, just north of Berkeley. It seems an odd place for such a steep little hill. As it turns out, this hill is a small chip of sandstone, scraped off the Pacific Plate sliding under the North American Plate. It is the namesake for the town of El Cerrito ("the little hill" in Spanish), even though the hill itself is now in the town of Albany—hence its name, Albany Hill.

Because it sits directly in the path of the cool sea breezes drawing in the Golden Gate, Albany Hill is a home for several species normally farther north, such as the Nootka Rose. At the base of north side of the hill, five small streams come together in a grove of oak trees that is relatively unchanged since European contact. Mortar rocks (where acorns were ground) and a shell midden are evidence of Ohlone habitation. The hill is now capped with introduced eucalyptus trees. These trees block the view somewhat, but through the gaps you can see across the Golden Gate Fields race track all the way to San Francisco, the Golden Gate Bridge, and the hills of Marin County.

Another unusual place to find a very nice view of the Bay is the visitor's parking lot at San Quentin Prison. Just before reaching the prison's main gate (you'll recognize it because of the big sign and the armed guard), you can turn left and go down the hill to the visitor's parking lot. Or, if you can find street parking, there is a small shoreline park a few hundred feet before the



Photo by Joel Williams

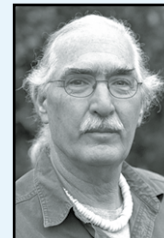
Albany Hill, on the east side of I-80 just north of Berkeley, is home to several species normally found farther north due to the cool sea breezes and fog that it frequently sees. It is also a spot where unique views of the Bay can be had.

gate. The view of the Bay from either of these places is like a step back to the 1930s. There are a few homes along the shore of the Bay and a small pebbly beach from which you can savor the wind, waves and birds. It's a very peaceful, idyllic spot—as long as you have your back to the prison.

The last unexpected vista point I want to mention doesn't have a view of the Bay, but the view is magnificent and very San Francisco, especially at night. The focus is the lighted dome of San Francisco's City Hall. The location? The small balconies of Davies Symphony Hall. Before a performance or during intermission, concert goers can step out onto these balconies to enjoy the sights. City Hall is the dominant structure, but other features of the City are visible as well against the backdrop of the night sky. A glass of champagne and the

expectation of magnificent music will only enhance the view.

Ray Wichmann, is a US SAILING-certified Ocean Passagemaking Instructor, a US SAILING Instructor Trainer, and a member of US SAILING's National Faculty. He holds a 100-Ton Master's License, was a charter skipper in Hawai'i for 15 years, and has sailed on both coasts of the United States, in Mexico, the Caribbean, and Greece. He is presently employed as the Master Instructor at OCSC Sailing in the Berkeley Marina.



Effortless MOBILE PUMP-OUT SERVICE

Now service 2 days a week in Berkeley, Emeryville and Oakland Estuary!

Regular Service | Maintenance | Repair

KEEP THE BAY CLEAN WITH

BayGreen
MARINE SANITATION

www.baygreen.net | service@baygreen.net | 415-621-1393

Discovering the Freedom of Bay Kiteboarding

BY KIRA DETKO

Captain John's Kite the Bay wasn't my first experience with kiteboarding. On a whim, I had taken a kiteboarding lesson last year on a vacation in Mexico. I thought it was an intriguing sport, but the instructor in Mexico was somewhat inattentive, and at the end of a few days I didn't feel comfortable with kite control and wasn't convinced the sport was right for me.

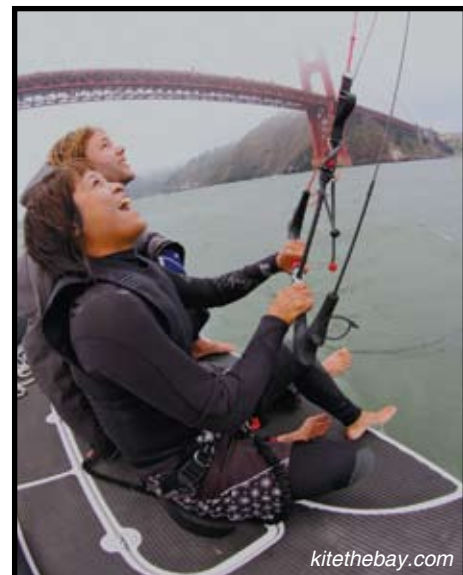
Over the course of the summer, however, I had friends pick up the sport

who loved it. They made me rethink my initial conclusion, and this May I saw an advertisement for Captain John's Kite the Bay. I liked the idea of taking lessons at a convenient location like Treasure Island. I was also attracted to starting the lessons in the water right away; during my Mexican vacation lessons I felt panicky as I bounced around on land with a powerful kite.

My first lesson with John gracefully eased me into the sport. He could sense that I was a little uneasy about safety, so he gave me the opportunity to fly the kite off of the back of the boat first. This way, I wasn't connected to the kite and I could focus on controlling its responsive and agile characteristics without getting spooked by its power.

As additional training, John wanted me to feel what it was like to ride a board without the responsibility of flying the kite. He put me in a harness and attached me to kiteboarding lines strung from a pole off the side of his boat. Being hooked up to this "kitepole" produced a feeling similar to that of a kite, but I didn't have to be in charge of steering it, so riding the board received my full attention. Breaking up the lessons of flying the kite and riding the board was a huge bonus.

With my newfound confidence in my control, I was ready to hook up and hop in. By the time I was in the water, "body dragging" with kite attached to me, I was thrilled and fully committed to getting up and riding. John used a headset so that



Breaking up the lessons of flying the kite and riding the board is very helpful in building confidence.



Photo by Joel Williams

Another method used by Kite the Bay is the "kitepole" which allows the students to give their full attention to just riding the board.



Photo by Joel Williams

When conditions are right, Ocean Beach is a popular place for kiteboarders.

he could speak to me directly through my helmet. I began to successfully guide myself around in the water with the power of the kite.

John's lessons completely opened my eyes to the power of kiteboarding. I had never felt this type of freedom in a sport. Wakeboarding relies on a boat, and jet skiing and many other water sports bog down with excessive amounts of gear and fuel. But with kiteboarding, I can throw a kite in a backpack, grab a board and essentially just go—as long as the wind cooperates!

When I finally got in the water with the board and the kite, I realized the potential for an amazing experience. But there's one last hurdle—the challenge of transitioning between being in the water with the kite to putting a board on, standing up and riding. This can be a tedious experience, especially listening to other friends' stories. I have to admit I had my frustrating moments, I drank a lot of Bay water and crashed my kite a number of times, but Captain John gave me plenty of encouragement and

remained patient and calm.

As for my lessons, if it was a rough day, we'd end on a high note. If the wind wasn't just right, we'd take the time to change kite sizes, and make sure our gear matched the conditions. Having the boat offered protection from the winds during breaks, so I could regain my stamina before hopping back in for another run. And being within view of Alcatraz and the Golden Gate was, as you might imagine, truly amazing. I am happy to say I am now riding and feeling great. I still have lots to learn and many seasons of practice ahead of me, but there is no feeling quite like that of combining the elements of wind and gliding on my board. I'm hooked!



Students at Captain John's Kite the Bay first learn how to fly the kite off the back of a boat.



Target to Bring Green Commitment to Its Proposed New Bay Area Stores

BY BILL PICTURE

Environmental impact was among the concerns raised when Target began the permitting process for three stores in two Bay Area cities—San Francisco and San Rafael.

The Minneapolis-based chain's plan to resuscitate downtown San Francisco's consistently underperforming Metreon shopping arcade were met with little resistance. The store is slated to open early next year.

It would be an understatement, however, to say that some local residents and business owners in the City's historically less chain-friendly Richmond District, and Marin's county seat, San Rafael, were less than thrilled when they learned of Target's intention to move into their neighborhoods.

Despite the opposition, Target's proposed second San Francisco location enjoys the support of San Francisco Supervisor Eric Mar, whose district includes

the Richmond District. Mar believes the project will breathe new life into a cursed



For Earth Month 2011, Target gave away one million reusable bags. To encourage customers to use reusable bags (and minimize the use of earth-unfriendly plastic bags), Target offers a five-cent per-reusable-bag discount to customers.

corner abandoned some time ago by both Sears and Mervyn's.

As for the East San Rafael location, Target has spent considerable effort attempting to prove to local residents that it will be a good neighbor. Last month, the store, which has already been approved by City Council, came a big step closer to fruition when its opponents failed to gather the signatures needed to overturn the Council's decision.

While statistics demonstrating Target's ability to revitalize local economies may fail to persuade some, and others continue questioning the company's commitment to diversity—donations to some non-gay-friendly groups and politicians prompted LGBT activists to call for a boycott—the company's commitment to the environment is solid, not to mention longstanding. Though its official green stance wasn't made public until 2010, Target had by then beat many of its competitors to the green punch, with since-proven sustainable business practices being implemented in the early 1970s.

In addition to keeping a close eye on in-store lighting levels and temperatures to increase energy efficiency, Target had its own back-of-house recycling program in place well before waste diversion was a standard business practice. That program has since been stepped up to include front-of-house recycling stations. Last year, bins were added where customers can deposit smaller electronic items. Some of those items, such as cell phones, smart phones, data pads and video game devices, can even be traded in for credit to be applied to new purchases.

"Target reuses or recycles roughly 70 percent of the materials that would have been sent to a landfill," said company



Target's Downtown San Francisco store, which will occupy a few floors of the Metreon shopping arcade, will open in 2012. Target is looking to locate more stores in urban centers and near transit hubs, to minimize (or altogether eliminate) drive times for customers and employees.

spokesperson Sarah Bakken, "like corrugated cardboard, plastic shrink wrap, cell phones, garment hangers, electronics and company-owned equipment, shopping carts, glass, plastic and used inkjet printer cartridges."

Target has also seriously turned up its efforts to be more energy efficient. In 1989, a centralized energy management system went into use to regulate energy consumption in all Target stores, distribution centers and offices. In 2003, a Target store in San Diego went solar. Solar panels, which generate roughly 20 percent of a store's energy needs, have since been installed in several dozen other stores across the country.

Most recently, the fluorescent bulbs in reach-in freezers and coolers were replaced with efficient LED lights, which use significantly less electricity. LED lights also emit less heat, cutting down on the amount of electricity needed to keep the items in those freezers and coolers at the

appropriate temperature. Some stores even have motion-activated lighting that turns on freezer and cooler lights only when a customer enters that aisle.

Burning the green candle at both ends

But not all of the company's green measures were dreamt up by the folks at its corporate headquarters. Bakken said store managers are encouraged to go beyond the corporate-mandated green call of duty and shape additional policies and procedures for their respective stores based on feedback from employees and customers.

When stores in Montana installed front-of-house recycling bins, they found they couldn't empty the bins for glass products fast enough. It turned out there are few glass recycling facilities in the state, so customers were bringing all of their glass recyclables to Target stores. "So the leadership developed processes for



guests to drop off large quantities of glass through the loading dock of the store," said Bakken.

At a distribution center in New York, employees petitioned managers to set aside parking spaces for those staff committed to greening their commutes. Management listened, and now carpools and hybrids enjoy the choicest spots in the lot.

And the commitment of employees and management to be sustainable extends beyond handbooks and manuals to the aisles of its stores, where right next to big-name brands, customers will find sustainable choices with local roots. Bay Area offerings currently found on the shelves of local stores include San-Rafael-based Annie Chun All-Natural Foods, San-Francisco-based Method products, and dairy products from Hayward-based

Berkeley Farms. In 2009, Target was certified a USDA Organic Grocer.

Waste not, want not

Bakken called the process being undertaken when choosing locations for new stores, including the San Francisco and San Rafael stores, "responsible growth."

In the case of the San Francisco stores, Target plans to renovate existing buildings rather than building from scratch, which minimizes the use of virgin building materials. Bakken added that the downtown San Francisco location was also chosen because its urban situation minimized the need of customers and employees to drive to the store.

"It's designed around the expectation that many of our guests and team members will use alternative means of travelling to the store, including public

transit," she explained. "It was critical that we located our store near the major transit hubs in downtown San Francisco."

The proposed East San Rafael store will be built atop a former landfill, property with limited development options. Bakken said Target has considerable experience turning a lemon of a piece of real estate into community-benefitting lemonade.

Bakken said, "Target will be investing \$50 million in the revitalization and ongoing maintenance of the site, a clear long-term commitment aimed at mitigating environmental factors and contributing to smart growth."

Assuming the San Rafael store gets the final green light, it will also be the state's first building over 10,000 square feet to get a gold LEED rating by the U.S. Green Building Council. Green inside and out,

the store's blueprint calls for a 300 kW rooftop solar system and electric vehicle charging stations.

While Target's efforts to green its operation could hardly be considered baby steps, when it comes to imparting upon its employees, customers and vendors the importance of sustainability, Bakken believes it's best to encourage smaller lifestyle changes.

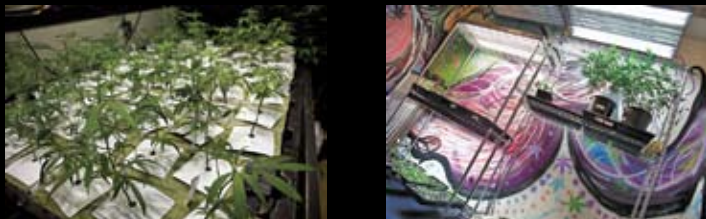
"Target joins guests, team members and partners in making environmental commitments we all can keep," she said. "The small changes add up to make a big difference."

For more information on Target's green philosophy, visit <http://hereforgood.target.com/environment/>.

GREENWELL COLLECTIVE

- Six Flavors of Ice Cream • THC Slushie Machine
- Patient Lounge with Free PC • Jukebox • Trail Mix
- Non-Medicated Whole Foods Snacks • HD Direct TV • Free WiFi

Patient Smoking Lounge



Dedicated Clone Room

Bigger Plants!

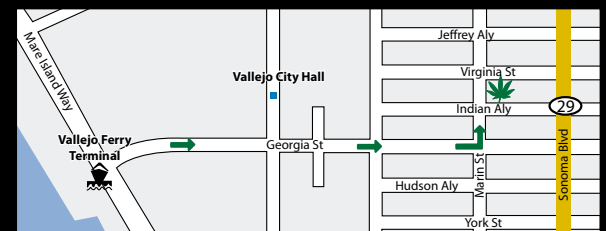


NEW PATIENTS

Free mid-grade 1/8th with \$50 donation
Must bring coupon. New patients only.

Best Med Room in Solano County

Buy 3, Get 1 Free
on Everything = 25% off
Rebate on all purchases



Drinks



Sauces



Jello



Lollipops



Chocolate Bars



Peanut Butter & Caramel

Serving Napa & Vallejo

JUST BLOCKS FROM THE VALLEJO FERRY TERMINAL!
616 MARIN ST. VALLEJO, CA
707.980.7774 OPEN EVERY DAY 9AM TO 9PM
WWW.GREENWELLCOOPERATIVE.COM



America's Cup World Series Set to Begin in Portugal

BC STAFF REPORT

On August 6, Cascais, Portugal will host the first stop of the 2011-2012 America's Cup World Series, which includes events in Plymouth, England and San Diego before the end of the year, and which will debut in San Francisco in summer 2012. A new professional circuit that will bring the America's Cup to international port cities around the globe, the AC World

Series will feature all of the America's Cup competitors as they hone their skills for the big event in 2013.

The AC World Series signals many firsts in the America's Cup, including a new format and race course designed to showcase both the exceptional speed and maneuverability of the AC45 catamarans and the skills of the international athletes.

Tight, short race courses are designed to deliver close racing for the fans on shore as well as online and TV audiences. The innovative regatta format includes a mix of speed trials, head-to-head match racing

and all-out fleet racing with 10 identical AC45s on the line. The highlight will be a spectacular, winner-takes-all fleet race at each event, where the teams will be vying for not just the event title, but also to put points on the board for the 2011-12 AC World Series.

"Seeing 10 AC45s jockey for position on the starting line is an image that will set any sports fan's heart pounding," said Iain Murray, CEO and Regatta Director, America's Cup Race Management. "And the one-on-one match races promise to be even more intense, at just 20 minutes per pressure-filled contest. Every decision—and every mistake—could be a game changer."

Each AC World Series will consist of four events over nine days: the America's Cup Open, the America's Cup 500 Speed Trial, the America's Cup Match Racing Championship and the America's Cup World Series Championship—the winner-takes-all showcase competition at each event.

At the first event in Cascais, a stunning seaside town offering strong afternoon breeze, racing will take place within meters of spectators on the River Tagus waterfront. Bringing America's Cup level competition within shouting distance of fans will be one of the highlights of this new America's Cup cycle.

Cascais AC Open: Held over the opening weekend, this fleet racing event will reveal what the teams are made of both in terms of tactical decision-making and pure speed. The opening weekend will feature up to four fleet races with 10 boats battling for supremacy.

AC 500 Speed Trial: On the opening Saturday, the teams will vie for the title of fastest boat through timed speed trials over a 500-metre course, pushing their wing-sailed AC45 catamarans to the limit.

Cascais AC Match Race Championships: The third stage of the competition pits the teams in one-on-one clashes to earn a place in a final showdown on Saturday. Each day will consist of three 20-minute fleet races to determine the top six teams, who then face off through three match races. Every day of racing produces a ranking of the full fleet. The results over the three days will determine the seeding order for the Match Race Championships.

On the final Saturday, the Match Race Championship will find the six best teams (as determined over the previous three days) battling through a quarterfinal, semifinal and final to determine the Cascais AC Match Race winner.

AC World Series Championship: This title is at stake on the final Sunday in a winner-takes-all fleet race, where all teams will have a shot at the title.

"This is a tremendous moment in America's Cup history, where cutting-edge innovation will be harnessed into some spectacular sailing," said Richard Worth, chairman of America's Cup Event Authority. "Identical boats that can go faster than the wind mean a strenuous, physical event where the best of the best will shine through. We look forward to celebrating this inaugural AC World Series in Cascais."

At the end of the overall 2011-12 AC World Series events, a series champion will be crowned based on the teams' cumulative scores from the final Sunday fleet races from each event.

All AC World Series events will be livestreamed at www.americascup.com. The 2011 schedule includes: Cascais, Portugal, August 6-14; Plymouth, England, September 10-18; and San Diego, November 12-20.

Escape the Fog and Enjoy the Sunshine in

Sausalito!

Sausalito is sizzling with Summer events including:

Fri. nights until Oct 30 Late Night Ferry service on Blue & Gold Ferry (Last ferry from Sausalito to SF 9:40pm on Friday night) *

Fri. nights until Sept Sat. Aug 6th Jazz by the Bay at Gabrielson Park
Maritime Day at Galilee Harbor

Sat-Mon. Sept 3,4,5 59th Annual Sausalito Art Festival at Marinship Park (Direct ferry service from SF)

Sun. Sept 25 Chili Cook-Off at Dunphy Park

Call Sausalito Chamber of Commerce at 415-331-7262
or visit www.sausalito.org for more information



Ric Miller

*June-Oct The last ferry departs Sausalito at 9:40pm on Friday and arrives Ferry Building at 10:05pm and Pier 41 at 10:20pm

Outside Lands Festival Returns to Golden Gate Park

In a partnership with the San Francisco Recreation & Park Department, Another Planet Entertainment, Superfly Productions and Starr Hill Presents will bring the Outside Lands Music & Arts Festival to San Francisco's historic Golden Gate Park for its fourth year on August 12-14. Phish, Muse and Arcade Fire will headline the three-day festival that will also feature over 70 other popular acts including John Fogerty, the Black Keys, the Original Meters, Warren Haynes Band and Mavis Staples. With six main performance stages, the music programming will represent a wide range of genres, including rock, blues, reggae, jazz, hip-hop, world, soul and Latin music. Local acts will also be featured prominently, representing San Francisco's vibrant cultural community.

In its first three years, the Outside Lands Music & Arts Festival has diligently worked its way into becoming a welcomed and beloved tradition in its hometown, and it is now known throughout the country as the event that celebrates in grand style all the things that make the Bay Area one of the most desirable places to live and visit. Besides raising nearly \$3 million for the San Francisco Recreation & Park Department, the festival has set a new standard for live music in northern California and the 2011 lineup is perhaps one of its most diverse and exciting to date.

A unique array of on-site activities will be available at the festival as producers plan to treat patrons to an all-encompassing local experience with areas of the park dedicated to emerging technology, local wine and food with a special emphasis on sustainable green practices throughout the festival grounds.

Greening the Festival

Eco Lands, situated in the heart of Speedway Meadow across from Wine Lands and 100 percent powered by alternative energy, will be the focal point of the Outside Lands' sustainability mission and environmental commitment for the fourth year in a row. Outside Lands has continually raised the bar of sustainable events and will once



Phish will headline the Outside Lands Festival on Friday, August 12.

again challenge attendees to help decrease the festival's carbon footprint by watching emerging artists on the solar-powered Panhandle Stage, choosing refillable water bottles over plastic ones, recycling and composting their waste, biking, carpooling or shuttling to the festival, and eating locally sourced food from our farmers' market and restaurants.

This year, Eco Lands is very excited to introduce Farm Lands, a representation of San Francisco's commitment to supporting urban agriculture and partnering with local farmers. While visiting Farm Lands, attendees will be able to visit three of San Francisco's most notable urban agriculture non-profits (Garden for the Environment, Hayes Valley Farm and Urban Sprouts) who will offer a series of workshops demonstrating how urban dwellers can grow fruits and vegetables. Next, drop by the Full Belly Farms farmers' market and sink your teeth into delicious, seasonal, organic fruit including a variety of melons, grapes, apples, and a mixed selection of nuts. Finally, enjoy eating your fruit and resting your feet while sitting on the Farm Lands' barnyard bleachers, built out of 250 straw bales.

For more information on the Outside Lands Music & Arts Festival and a complete line-up of performers visit www.sfoutsidelands.com.

 **BLUE & GOLD FLEET**

415.773.1188

www.blueandgoldfleet.com



The enchanting nautical experience begins when passengers board Blue & Gold Fleet boats that sail on San Francisco Bay. Blue & Gold Fleet is the largest excursion and commuter ferry service provider in the Bay Area.



San Francisco Bay Cruise Adventure An hour long cruise along the City's historic waterfront, right past the PIER 39 sea lions, under the Golden Gate Bridge, by Sausalito, past Angel Island and around Alcatraz.

Sausalito & Tiburon A comfortable ride across the San Francisco Bay to the two Marin seaside villages of Sausalito and Tiburon to enjoy shopping, dining or an easy stroll around town.

Angel Island A California State park and wildlife reserve. Angel Island is both a great picnic destination with hiking, kayak tours, an hour-long fully-narrated TramTour, as well as a historical site dating back to the U.S. Civil War.

Vallejo Sail to Vallejo, a waterfront community that includes the city's Heritage District, Vallejo Naval and Historical Museum and family-friendly Six Flags Discovery Kingdom theme park.

Alameda & Oakland There's dining in Jack London Square, the Farmer's market on Sundays and jazz nightly.

**Blue & Gold Fleet at PIER 39
Beach Street & The Embarcadero
San Francisco**

Jack London Square to Debut Fitness and Cycling Events

Jack London Square is sure to get your blood pumping this summer and fall with two new events for both active and casual fitness enthusiasts: Fit Rave and Pedalfest.

Fit Rave will begin on Saturday, August 20, and the workouts will continue monthly into October. Featuring registered attendees traveling from fitness station to fitness station, Fit Rave offers activities including spinning, yoga, strength and more. Exercisers will remain at each station for 30 minutes before moving on to the next workout. At the end of the tiring day, all are welcome to a refreshing beer party provided by Miss Pearl's Jam House.

Interested in participating? Call the Jack London Square office at (510) 645-9292 to leave your name. The registration fee is \$20, with all proceeds benefitting Playworks, a national nonprofit organization that supports learning by providing safe, healthy and inclusive play and physical activity. There are only 75 spots available, so register soon!

Jack London Square will celebrate the joys of bike riding at Pedalfest on Saturday, October 22 from 10 a.m. to 5 p.m. Oakland is emerging as one of America's most bike-friendly cities, and Pedalfest will help demonstrate the transformative effect bike riding has on the community. Activities at the festival will include a vintage bike show, pedal-powered amusement rides, cycling

safety programs and a kids zone. Pedalfest will be a celebration for the recreational rider and the seasoned cyclist, as well as the casual observer.

The celebration will showcase what makes cycling such a popular activity for individuals, groups and families. Families with children will enjoy a parade and puppet show while others will appreciate a collection of vintage bikes at "The Art of the Bicycle" show. Attendees will also have the opportunity to see professional riders doing amazing stunts.

In addition to the activities on wheels, participants can enjoy tasty eats from food vendors, pedal-powered food vendors and drinks from the New Belgium beer garden. Pedalfest will also feature live music.

Aside from these great events, you can visit Jack London Square any night of the week to sample some of Oakland's most innovative restaurants, including Bocanova, Cocina Poblana, Il Pescatore, and Kincaids, among others. You can also swing by each Sunday morning to visit the Jack London Square Farmer's Market—one of the largest in the region.

For more information about Fit Rave, Pedalfest, or any other Jack London Square event, check out JackLondonSquare.com. You can also find Jack London Square on Facebook and on Twitter at @JackLondonSq.

Enjoy WATERFRONT DINING AT JACK LONDON SQUARE

**Bocanova • Cocina Poblana • Hahn's Hibachi
Il Pescatore Ristorante • Kincaid's Bay House • Miss Pearl's Jam House
Scott's Seafood Restaurant • Yoshi's Oakland**



Broadway & Embarcadero | Oakland
www.jacklondonsquare.com

Waterfront Flicks
Free Outdoor Movies
August 4
Ratatouille
August 18
Dinner for Schmucks
...and more!

Quiet Diversions and Classic Events

BY PAUL DUCLOS

One of joys of riding the ferry is that it is a stately mode of transportation, permitting passengers to quietly contemplate their immediate destination and the larger implications of the journey itself.

And let's place an emphasis on quiet here, for ferry commuters are seldom exposed to what is commonly called background music. Our favorite insight on this subject comes from Milan Kundera, who, in his brilliant novel *Ignorance*, quotes Schoenberg and others on this postmodern atrocity:

Radio is an enemy, a ruthless enemy marching irresistibly forward, and any resistance is hopeless; it force-feeds us music . . . regardless of whether we want to hear it, or whether we can grasp it, with the result that music becomes just noise, a noise among other noises. Radio was the tiny stream it all began with. Then came other technical means for reproducing, proliferating, amplifying sound, and the stream became an enormous river. If in the past people would listen to music out of love for music, nowadays it roars everywhere and all the time, regardless whether we want to hear it, it roars from loudspeakers, in cars, in restaurants, in elevators, in the streets, in waiting rooms, in gyms, in the earpieces, music rewritten, reorchestrated, abridged, and stretched out, fragments of rock, of jazz, of opera, a flood of everything jumbled together so that we don't know who composed it (music become noise is anonymous), so that we can't tell beginning from end (music become noise has no form): sewage-water music in which music is dying.

So where does one go to find a quiet place for lunch, dinner, or cocktails? For the lucky few, it's the Presidio Golf Club in Pacific Heights. While its chief attraction is golf—another quiet pastime—many of the club's social members belong because the only music one hears is that of lyric conversation. No Pandora! We must also add that the food is sublime, and

the service without compare. *Cultural Currents* has featured this place in the past as a place of fellowship and gentle recreation. The PGC is now actively seeking golfers and non-golfers alike by offering very attractive membership deals. In a city filled with noise, this is a sanctum sanctorum.

Lamplighters Stages *H.M.S. Pinafore*

Of course, when it comes to music performed in a live setting, there are many options to explore. One of our favorites is the Lamplighters Music Theatre, which often produces the comic operas of librettist W.S. Gilbert and composer Arthur Sullivan. But besides the entire Gilbert & Sullivan canon, this troupe performs other light opera and musical theatre classics such as *The Merry Widow*, *Die Fledermaus*, *Of Thee I Sing*, *My Fair Lady* and *A Little Night Music*.

Lamplighters is currently staging a sparkling production of the Gilbert & Sullivan comic opera *H.M.S. Pinafore*. Audiences will board one of England's great Navy ships where the beautiful Josephine must choose between marrying the First Lord of the Admiralty—with all of the wealth, prestige and power his title affords—or the “simple sailor, lowly born” who has won her heart. Gilbert devised the plot to make fun of patriotism, social class snobbery and incompetence in high places.

This is enchanting music to be cherished and adored. Finding a sacred quiet place to have a pre- or post-performance meal, however, is going to be a challenge. We invite readers to share any discoveries made in this regard, and promise to champion their cause.

Dijon Must'art Brings Taste of France to the Bay Area

Finally, this is a must-attend event: Dijon Must'art.

Ferry commuters will have an ideal opportunity to participate in a citywide, weeklong project celebrating the creativity and vitality of Dijon, France. A delegation of leading chefs, wine experts, artists, musicians and businesspeople, led by the City of Dijon's Senator-Mayor François Rebsamen, will visit San Francisco for a series of events next month including two Ferry Plaza Farmer's Market Events which are open to the public on Saturday August 20 and Tuesday August 23..

Dijon Must'art coincides with opening at the Legion of Honor's traveling loan exhibition *The Mourners: Medieval Tomb Sculptures from the Court of Burgundy*.

Dijon Must'art is supported by the City of Dijon, Burgundy Tourism, FRAME, Musée des Beaux-Arts de Dijon, the French Embassy in the United States, the Fairmont Hotel in San Francisco, Le Cordon Bleu California Culinary Academy, and Ferry Plaza Wine Merchant. For more information about Dijon Must'art events, please visit www.dijon-must-art.com.



TIBURON ART festival 2011

TIBURON ART FESTIVAL

AUGUST 27-28, 2011 • 11am-6pm Saturday and Sunday
Historic Ark Row, Main Street, Tiburon

www.tiburonartfestival.homestead.com

Vallejo ~ San Francisco
Baylink Ferry



DumpthePump



**SAVE MONEY
RIDE TRANSIT**



**Shuttle Service to Six Flags
Discovery Kingdom**



**Walk to the Empress Theatre
in Downtown Vallejo**
www.EmpressTheatre.org

**Direct Service to AT&T Park
for Giants Games**

Baylink
Travel
the Easy Way

Vallejo
TRANSIT

877.64.FERRY or
www.baylinkferry.com

WATERFRONT ACTIVITIES

- Every Saturday** **9:30AM – 11:30AM, 12:30PM - 2:30PM & 2:30PM - 4:30PM - Introduction to Sailing Course - OCSC Sailing, Berkeley, 510-843-4200, www.ocscsailing.com**
This two-hour skippered charter is designed to provide folks who are considering getting into sailing with a real glimpse of the sport, our club and our people. Cost is \$40.
- Every Wednesday** **6PM – 8PM - Night Sail (Women's Only Boat on August 10th) - OCSC Sailing, Berkeley, 510-843-4200, www.ocscsailing.com**
Wednesday This two-hour skippered charter is a great way to break up a long week. We'll be sailing from 6 to 8 pm and follow that with a chili and chowder social. Don't miss this great opportunity for a mid-week break! On August 10th there will be a "Women's Only" boat! Cost is \$40.
- August 10** **Thru August 12th – "Voyage Seaward" Sailing Camp for Teens – Call of the Sea, Sausalito, (800) 401-7835, www.callofthesea.org**
Youth ages 12-15 are invited to take part in this 3-day overnight sailing camp to explore San Francisco Bay! Under the guidance of a professional captain and crew, students are challenged to become a team through learning to sail a classic schooner. Participants learn the basics of sailing and seamanship, conduct hands-on marine research, and connect with each other and the bay in a meaningful and lasting way.
The cost is \$425 per student.
- August 12** **5PM – 11PM - Full Moon Sail - Club Nautique Sailing School & Charters, Sausalito, (415) 332-8001, www.clubnautique.net**
Join Club Nautique's evening chartershare sail. Enjoy a lovely evening sail as you watch twilight taken over by darkness and take in the shimmering lights of the city while you anticipate the moonrise that will take your breath away! Must be willing to actively participate in operation of vessel.
Cost: Members \$75/Non Members \$100. Please call to reserve space.
- August 12** **6PM– 8:30PM - Sunset Sail - Call of the Sea, Sausalito, (800) 401-7835, www.callofthesea.org**
Watch the sun set from the deck of our 82' schooner, SEAWARD. This is a relaxing way to end the week! Wine, non-alcoholic beverages, and light snacks included. Adult \$45
- August 12** **6:30PM – 9:30PM - Moonlight Kayaking Tour - Outback Adventures, Larkspur, 415-461-2222, www.outbackadventures.com**
Navigating your kayak by moonlight is a mystical experience you won't soon forget. This unique kayak tour allows for a grand view of the moon rising into the night's sky. We will paddle leisurely while admiring the moon's silvery light reflecting off the water's surface. Cost is \$65 with an additional 10% Friend and Family Discount when booked as a group of 3 or more.
- August 13** **9:30AM – 12PM - Introduction to Stand Up Paddleboarding - Outback Adventures, Larkspur, 415-461-2222, www.outbackadventures.com**
Have you ever wanted to walk on water? Stand up paddleboarding (SUP) is probably the closest you'll get. This fast growing activity can be done on flat water, the open ocean, rivers, and of course in the surf! This class will introduce you to the exciting sport of SUP as you learn proper SUP paddling strokes, develop good balance, learn where and how to stand, learn board maneuvering skills, reboarding techniques, and safety concerns.
- August 20** **10AM – 2PM - Bay Cruising Workshop - Club Nautique Sailing School & Charters, Alameda, (510) 865-4700, www.clubnautique.net**
Learn about all the really cool places to go by boat on the San Francisco Bay from people who have been there/done that! Cost: Members Free/Non Members \$75. Please call to reserve space.
- August 20** **2PM – 5PM - Saturday Schooner Seaward Sail & Free BBQ - OCSC Sailing, Berkeley, 510-843-4200, www.ocscsailing.com**
Join us on a three hour sail on the Schooner Seaward followed by a free BBQ! Cost is \$60 retail, \$40 for members.

Waterfront Adventures is an advertising sponsored section for activities on or around the water in the Bay Area. If you are interested in having your events or activities listed in this section contact Joel Williams at joel@baycrossings.com.



The Top Rated Sailing School in North America!

OCSC™ SAILING
Inspire Confidence™

Check Out Our New Award Winning Website: www.ocsc.com

Learn How to Sail • Free Sailing Event • Real-Time Weather • Live Webcams
One Spinnaker Way Berkeley, CA 94710 • Phone: (800) 223-2984



San Francisco Bay's Premier Sailing School & Charter Company

★ **Learn to Sail!**
Beginner to Offshore

★ **Charter Beautiful New Boats!**
Power & Sail from 26' - 50'

★ **Two Ideal Locations**
Alameda ~ 510-865-4700
Sausalito ~ 415-332-8001

Make your dreams a reality... Start today!

Club Nautique
www.clubnautique.net

WATERFRONT ACTIVITIES

- August 20 4PM – 6PM - Monthly FREE BBQ – OCSC Sailing, Berkeley, 510-843-4200, www.ocscsailing.com**
Come sail with us on an Introduction to sailing outing and then partake in our monthly Saturday BBQ. Take a tour of our school, meet club members and make new friends!
- August 21 9AM – 5PM - Radar/GPS Clinic - Club Nautique Sailing School & Charters, Alameda, (510) 865-4700, www.clubnautique.net**
Aboard a sailboat equipped with Radar/GPS, learn the skills to operate these powerful tools to help steer you out of the fog. Cost: Members \$282/ Non Members \$375. Please call to reserve space.
- August 21 10AM – 3PM - Tomales Bay Kayak Tour - Outback Adventures, Larkspur, 415-461-2222, www.outbackadventures.com**
Experience one the premier paddling destinations in CA on this guided kayak tour of Tomales Bay and Point Reyes. Wildlife abounds in this spectacular setting. Colorful sea stars slide beneath your kayak as majestic Thule Elk roam the hillsides. Launching from Nick's Cove, we will paddle in stable double sea kayaks, past Hog Island, to the White Cliffs of Tomales Bay, a unique geological formation similar to the White Cliffs of Dover. We will then stop for lunch on a pristine beach, accessible only by small watercraft.
- August 26 6PM – 8:30PM – Sunset Sail - Call of the Sea, Sausalito, (800) 401-7835, www.callofthesea.org**
Watch the sun set from the deck of our 82' schooner, SEAWARD. This is a relaxing way to end the week! Wine, non-alcoholic beverages, and light snacks included. Adult \$45
- August 28 9AM – 5PM - Brunch Bunch Sail - Club Nautique Sailing School & Charters, Alameda, (510) 865-4700, www.clubnautique.net**
Join us for a fun sail to a Scott's Restaurant. Enjoy lunch ashore and a brisk sail home! Please plan to have at least one member of your party prepared to actively participate in the sailing of the vessel. Cost: Members \$80/Non Members \$135 (brunch not included in price). Please call to reserve space.
- August 28 9:30AM – 12PM - Introduction to Stand Up Paddleboarding - Outback Adventures, Larkspur, 415-461-2222, www.outbackadventures.com**
Have you ever wanted to walk on water? Stand up paddleboarding (SUP) is probably the closest you'll get. This fast growing activity can be done on flat water, the open ocean, rivers, and of course in the surf! This class will introduce you to the exciting sport of SUP as you learn proper SUP paddling strokes, develop good balance, learn where and how to stand, learn board maneuvering skills, reboarding techniques, and safety concerns.



Tours - Classes - Sales - Rentals

OUTBACK ADVENTURES

Now Offering
Stand Up Paddleboarding

outbackadventures.com – 415.461.2222

SAIL THE SCHOONER *SEAWARD!*

Public Sunset Sails with wine & cheese most Friday evenings.

Public Family Adventure Sails most Sunday mornings.

Port: Bay Model Visitor Center in Sausalito

Cost: Adults \$45, Youth (6-12) \$25, Children (under 6) free



Call of the Sea
A 501 (c)(3) nonprofit educational organization. To register visit www.callofthesea.org.

Lunch & Dinner Daily
Prix-Fixe Lunch Menu
Complimentary Valet Parking



Scoma's Restaurant
Fisherman's Wharf
Pier 47 on Al Scoma Way
415-771-4383
www.scomas.com

Scoma's
~ Since 1965 ~

Treasure Island Flea Offers Unique Shopping Experience

The Treasure Island Flea, which operates on the last weekend of every month, hosts hundreds of local Bay Area exhibitors. In addition to antiques and collectibles there is independent designer merchandise, handmade one-of-a-kind items, repurposed and up-cycled goods, shabby chic and French garden pieces, art, specialty food purveyors and more. The open-air market is held on Treasure Island, Avenue of the Palms, on Saturday and Sunday on the last weekend of the month from 9 a.m. to 4 p.m.

“This show is an experience, a haven of cool and unusual finds. It’s a place where shoppers connect directly with the designer, maker or collector of the products. Each market experience will be different, it will have a changing selection of both

merchandise and food,” said co-founders Angie and Charles Ansanelli. “We look to include local entertainment and special events. Customers attending the Treasure Island Flea will not only walk away with great treasures but also with memories of their finds to share for years to come.”

Treasure Island Flea also prides itself on providing a rewarding and convenient experience for exhibitors and food purveyors. Those interested in participating in the event can find more information online at www.treasureislandflea.com.

Treasure Island itself has played a significant role in history. The island was man-made in 1937, making it San Francisco’s third great project just behind the Golden Gate and Bay Bridges. The island hosted the World’s Fair in 1939. After the World’s Fair, the island was set to become San Francisco’s Municipal Airport



Treasure Island Flea promises a haven of cool and unusual finds directly from the designer, maker or collector of the products offered.

but ended up being seized by the Navy and played a pivotal role in WWII. Treasure Island is centrally located in the heart of the Bay Area and boasts some of the most spectacular views of the city.

The show will operate in August on Saturday and Sunday, August 27 and 28. Treasure Island Flea can be contacted at

Info@TreasureIslandFlea.com or (415) 898-0245.

Show Times 9 - 4pm, on the last Saturday & Sunday of each month
Rain or Shine Event the show goes on!
Parking is free and there is plenty of it.
Admission is \$3, Kids 12 and under are free.

FOOD
TRUCK
CRUSH

Gourmet Food Trucks

Fridays 4-8 pm through September

Larkspur Ferry Terminal

GET OFF · GET DINNER · GET HOME

World Class Ferry to World Champs Games!

Larkspur Ferry serving all Giants home games.

Enjoy a one-hour scenic Bay trip, arriving within steps of the stadium, ready to cheer the Giants on!

Tickets on sale at Larkspur and San Francisco Ferry terminals and online. Don't wait in line on game day. Purchase your tickets now!

www.tickets.com

**GO GIANTS!
GO LARKSPUR FERRY!**

© 2010 S. F. Giants

Expanding the Horizons of Bay Area Youth, One Voyage at a Time

BY HALEY CHUTZ

Hundreds of ships travel the waters of San Francisco Bay each day. Few of them are classic sailing vessels, and even fewer have the mission of Call of the Sea's schooner *Seaward*—inspiring and educating our local youth.

Call of the Sea, based in Sausalito, is a nonprofit educational organization dedicated to connecting people of all ages and backgrounds to the sea and its maritime traditions. The organization's teaching platform is the lovely 82-foot schooner *Seaward*, and its goal is to offer the benefits of connecting with the sea and sailing to all people, with a special focus on empowering youth of all backgrounds. Programs range from three hours to two weeks long, primarily taking place on San Francisco Bay and coastal waters but occasionally ranging as far away as the Baja Peninsula.

Call of the Sea's educational programs provide a way for youth to experience nature and build self-confidence through the challenge of sailing a traditional tall ship. During the hands-on programs, participants are completely immersed in the new world of a ship. They learn teamwork, leadership, and a variety of academic subjects while directly experiencing these concepts on the water. Through participating, students gain a new sense of empowerment and stewardship that their parents and teachers attest is carried with them to their lives onshore.



During the hands-on programs, participants are completely immersed in the new world of a ship.

One important part of Call of the Sea's mission is providing scholarships for underserved youth and for schools that have dwindling budgets for field trips. Sailing programs are impactful



Call of the Sea's educational programs provide a way for youth to experience nature and build self-confidence.

(often even life-changing) for youth of all backgrounds, but especially for these students. The unique educational opportunity helps close the learning gap between underserved youth and their better-served counterparts. One Boys & Girls Club volunteer said of Call of the Sea's overnight programs, "I have worked with underserved youth for over 15 years. I have seen how changing the life of one child changes the life of that child's family, then the community. These types of programs are invaluable to closing the education gap of our underserved youth."

Call of the Sea's programs are not just for kids. The organization thinks of *Seaward* as a boat for the community, with the motto "your bay, your boat," and it offers a little something for everyone. There are three-hour public sails for the community; educational day sails which are field trips for schools, scouts and other youth groups; and overnight summer camps for teens. Call of the Sea also offers customized programs to fit the educational goals of different groups. And for those itching for a longer voyage, *Seaward* sails to Mexico most winters with adult passengers,

and makes occasional voyages to the Farallon Islands and Drakes Bay through OCSC Sailing.

With more sailing days than almost any other vessel on the Bay, *Seaward* has become a common sight on our local waters. Her mission is to connect everyone to the water and the Bay's maritime heritage. Whether you are looking for a way to relax or to provide the adventure of a lifetime for yourself or a youth in your life, this nonprofit has something for you. To find out more, book a voyage, or support Call of the Sea, please call (415) 331-3214 or visit www.callofthesea.org. You can also



The *Seaward* is a 82-foot schooner that Call of the Sea uses as a teaching platform to offer the benefits of connecting with the sea and sailing to all people, with a special focus on empowering youth of all backgrounds.

consult the Waterfront Activities section of this issue (pages 20-21) for a list of available adventures aboard the *Seaward*.

SUPPORT THE BAY.



Support San Francisco Baykeeper.

San Francisco Baykeeper is the pollution watchdog for San Francisco Bay. Since 1989, we have been patrolling the Bay for pollution, strengthening clean water laws, and holding polluters accountable. Baykeeper is dedicated to restoring the Bay to a healthy, thriving estuary.

We rely on the support of people like you who care about the health of the Bay and its wildlife. Visit us online at www.baykeeper.org and become a member today.

SAN FRANCISCO
BAYKEEPER[®]
www.baykeeper.org

GET THERE BY FERRY

Golden Gate Ferry

LARKSPUR*

Weekdays (excluding Holidays)				Weekends and Holidays			
Depart Larkspur	Arrive S.F. Ferry Bldg.	Depart S.F. Ferry Bldg.	Arrive Larkspur	Depart Larkspur	Arrive S.F. Ferry Bldg.	Depart S.F. Ferry Bldg.	Arrive Larkspur
5:50 a.m.	6:20 a.m.	6:25 a.m.	6:55 a.m.	9:40 a.m.	10:30 a.m.	-----	-----
6:35	7:05	7:10	7:40	11:40	12:30 p.m.	12:40 p.m.	1:30 p.m.
7:10	7:40	7:45	8:15	1:40 p.m.	2:30	2:40	3:30
7:50	8:20	8:30	9:05	3:40	4:30	4:40	5:25
8:20	8:50	9:10	9:45	5:30#	7:00	7:15	8:00
9:15	9:50	10:10	10:45	One-way Ferry Fares			
10:10	10:45	10:55	11:30	Larkspur Sausalito			
11:10	11:45	11:55	12:30 p.m.	Daily Daily			
11:40	12:15 p.m.	12:25 p.m.	1:00	Adult Cash Fare \$8.75 \$9.25			
12:40 p.m.	1:15	1:25	2:00	Clipper \$5.70 \$4.85			
2:15	2:50	3:00	3:30	Youth/Senior/Disabled \$4.25 \$4.50			
2:50	3:25	3:35	4:05	Children 5 and under FREE FREE			
3:40	4:15	4:25	4:55	Children ages 5 and under travel free when accompanied by a full fare paying adult (limit two youth per adult).			
4:15	4:45	4:55	5:25	Golden Gate Ferry Fares, Effective July 1, 2011			
-----	-----	5:20	6:05	Fares shown are for one-way travel			
5:10	5:45	5:55	6:25				
5:35	6:10	6:20	6:50				
6:35	7:10	7:20	7:50				
7:20	7:55	8:10	8:40				
8:10	8:45	8:50	9:20				
8:50	9:25	9:35	10:05				

* Direct ferry service is provided to most Giants games at AT&T Park. Special service is provided to various concerts and the Bay to Breakers Race. On weekdays, with the exception of the 5:20pm San Francisco departure which uses a 715 passenger Spaulding vessel, all other trips use high-speed catamarans. Weekend service is provided by a 715 passenger Spaulding vessel. # 5:30pm trip is via Sausalito.

SAUSALITO

Weekdays (excluding Holidays)				Weekends and Holidays			
Depart Sausalito	Arrive S.F. Ferry Bldg.	Depart S.F. Ferry Bldg.	Arrive Sausalito	Depart Sausalito	Arrive S.F. Ferry Bldg.	Depart S.F. Ferry Bldg.	Arrive Sausalito
7:10 a.m.	7:35 a.m.	7:40 a.m.	8:10 a.m.	-----	-----	10:40 a.m.	11:10 a.m.
8:20	8:45	10:15	10:45	11:20 a.m.	11:50 a.m.	12:00 p.m.	12:30 p.m.
10:55	11:25	11:35	12:05 p.m.	12:45 p.m.	1:15 p.m.	1:25	1:55
12:15 p.m.	12:45 p.m.	12:55 p.m.	1:25	2:10	2:40	2:50	3:20
1:55	2:25	2:35	3:05	3:50	4:20	4:45	5:15
3:20	3:50	4:00	4:30	5:35	6:05	6:30	7:00
4:45	5:15	5:30	6:00	6:30	7:00	-----	-----
6:10	6:35	6:45	7:10	-----	-----	-----	-----
7:20	7:50	7:55	8:20	-----	-----	-----	-----

Contact Information Toll free 511 or 711 (TDD) For the Golden Gate Ferry website, visit: <http://goldengateferry.org/> Comments and questions can be submitted at <http://ferrycomments.goldengate.org/>

Holiday service is in effect on Martin Luther King, Jr. Day, Presidents Day, Memorial Day, Independence Day, Labor Day, and the day after Thanksgiving Day (Sausalito). The Larkspur line operates on a Modified Holiday Schedule on the day after Thanksgiving Day. No ferry service on New Year's Day, Thanksgiving Day, and Christmas Day.

Bay Area Ferry Terminal Locations

Alameda Ferry Terminal
2990 Main St. in Alameda

Harbor Bay Ferry Terminal
2 McCartney Drive in Alameda

Larkspur Landing Ferry Terminal
101 E. Sir Francis Drake Blvd., just east of U.S. Highway 101 in Larkspur, CA

Oakland Ferry Terminal
530 Water St @ Jack London Square in Oakland

Sausalito Ferry Terminal
Humbolt St. & Anchor Ave. in downtown Sausalito

Tiburon Ferry Terminal
Behind Guaymus Restaurant & the Intersection of Tiburon Blvd. & Main St. in Tiburon

Vallejo Ferry Terminal
289 Mare Island Way in Vallejo

Sponsored by

WATER EMERGENCY TRANSPORTATION AUTHORITY

WETA



ALAMEDA/OAKLAND

Weekdays to San Francisco				Weekends and Holidays to San Francisco					
Depart Oakland	Depart Alameda	Arrive S.F. Ferry Bldg.	Arrive S.F. Pier 41	Depart Oakland	Depart Alameda	Arrive S.F. Ferry Bldg.	Arrive S.F. Pier 41		
6:00 a.m.	6:10 a.m.	6:30 a.m.	-----	9:00 a.m.	9:10 a.m.	---	9:35 a.m.		
7:05	7:15	7:35	-----	10:40	10:25 *	11:10 a.m.	11:25		
8:10	8:20	8:40	-----	12:20 p.m.	12:10 pm *	12:50 pm	1:05 p.m.		
9:15	9:25	9:45	10:00 a.m.	1:55	1:45 *	2:25	2:40		
11:00	10:50*	11:30	11:45	4:00	3:45 *	4:30	4:45		
12:45 p.m. ^	12:35 p.m. *	1:15 p.m.	1:30 p.m.	5:45	5:30 *	---	6:20		
2:30	2:20*^	3:00	3:10	7:20	7:05 *	7:50	8:05		
4:40	4:30*^	5:10	-----	8:55 ^	8:45 *	8:25	9:30		
5:50	5:40*^	6:15	-----	10:30 ^	10:20 *	---	11:00 ^		
6:20	6:10*	-----	7:00	Weekends and Holidays from San Francisco					
6:55^	6:45*^	7:20	-----	Depart S.F. Pier 41	Depart S.F. Ferry Bldg.	Arrive Alameda	Arrive Oakland		
7:55^	7:45*	8:20	-----	8:30 a.m. #	---	9:10 a.m.	9:00 a.m.		
8:55^	8:45*	-----	9:25	9:45	10:00	10:20	10:35		
Weekdays from San Francisco				11:35	11:50 a.m.	12:10 p.m.	12:20 p.m.		
-----	6:30 a.m.#	7:15 a.m.	7:05 a.m.	1:10 p.m.	1:25 p.m.	1:45	1:55		
-----	7:35#	8:20	8:10	2:50	---	3:45	3:55		
-----	8:40#	9:25	9:15	4:55	5:10	5:30	5:40		
10:15 a.m.	10:30	10:50^	11:00^	6:30	6:45	7:05	7:15		
12:00 p.m.	12:15 p.m.	12:35 p.m. ^	12:45 p.m. ^	8:10	8:25	8:45	8:55		
1:45	2:00	2:20^	2:30^	9:40	9:55	10:15	10:25		
3:45	4:10	4:30^	4:40^	No ferry service on Thanksgiving Day, Christmas Day, New Year's Day, and Presidents Day.					
-----	5:20	5:40	5:50	Regular weekday service on Martin Luther King Jr. Day					
5:20	5:45	6:10	6:20	FARES:					
-----	6:25	6:45	6:55	One Way	Round Trip	10 Ticket	20 Ticket	Monthly Pass	
-----	7:25	7:45	7:55	Adult (13+)	\$6.25	\$12.50	\$50.00	\$90.00	\$170.00
-----	8:25	8:45	8:55	Junior (5-12)	\$3.50	\$7.00	PURCHASE TICKETS ONBOARD THE FERRY or at the Regional Transit Connection (RTC) at participating Bay Area businesses. Please call the 24-hour Ferry Fone at (510) 522-3300 to confirm times.		

* To S.F. via Oakland # To Alameda via Oakland
^ Departs immediately after loading
For the most current schedule, visit <http://www.eastbayferry.com/>

Schedule information collected from <http://www.eastbayferry.com>

Seniors must show valid I.D., Regional Transit Connection Discount or Medicare Card. Disabled Persons must show a Regional Transit Connection Discount Card. Children under 5 ride free when accompanied by an adult. Active Military Personnel must show military I.D. Fares subject to change. All times are estimates.

Blue & Gold Ferry

BAY CRUISE

Depart Pier 39		Weekends and Holidays	
Weekdays	Weekdays	Weekends and Holidays	Weekends and Holidays
11:00 a.m.	3:45 p.m.	11:00 a.m.	4:15 p.m.
12:00 p.m.	4:15	12:00 p.m.	5:00
12:30	5:30	12:30	5:30
2:30	6:45	2:30	6:15
3:00	---	3:00	6:45
		3:45	---

For the most current schedule, visit www.blueandgoldfleet.com
 Bay Cruise does not operate during inclement weather. Additional cruises may be added on demand. Check with ticket booth on day of sailing for schedule. No reserved seating available.

FARES: All prices include audio tour.

Adult	\$25.00	Junior (12-18)	\$21.00
Senior (62+)	\$21.00	Child (5-11)	\$17.00

Discount fares available at <http://www.blueandgoldfleet.com/Sightseeing/Boat/baycruise.cfm>

ANGEL ISLAND - S.F.

Weekdays - Daily Departures Pier 41

Depart Oakland	Depart Alameda	Arrive Angel Island	Depart Angel Island	Arrive Alameda	Arrive Oakland
9:20 am	9:45 am	10:05 am	10:10 am	---	10:30a
---	1:05 pm	1:40 pm	1:45 pm	---	2:05 pm
---	---	2:50 pm	3:00 pm	4:25 pm	3:20 pm

Weekends - Departures Pier 41

Depart Oakland	Depart Alameda	Arrive Angel Island	Depart Angel Island	Arrive Alameda	Arrive Oakland
9:20 am	9:45 am	10:10 am	10:20 am	11:15 am	11:35a
11:20	11:45	12:15 pm	12:25 pm	---	1:20 pm
---	2:10 pm	3:10	3:20 pm	---	3:50 pm
---	---	---	4:40 pm	6:00 pm	5:35 pm

ANGEL ISLAND PRICES (Round-trip)

FARES	S.F. Pier 41 Ferry Bldg*	Alameda/Oakland*	Vallejo*
Adult	\$17.00	\$14.50	\$30.50*
Child	\$9.50 (age6-12)	\$8.50 (age 5-12)	\$21.00 (ages 6-12)
Child	Free (5 & under)	Free (4 & under)	Free (5 & under)

* All prices include State Park Fees / Weekend Schedule on Memorial Day (May 25) / Independence Day (July 4) and Labor Day (Sept 7)

ALAMEDA/OAKLAND - WEEKENDS ONLY

Depart Oakland	Depart Alameda	Arrive Angel Island	Depart Angel Island	Arrive Alameda	Arrive Oakland
9:00am*	9:10am*	10:10am	3:10pm	3:45pm*	3:55pm

Vallejo - Weekends Only

Depart Vallejo	Arrive Angel Island	Depart Angel Island	Arrive Vallejo
8:30 am *	10:10 am	3:20 pm	5:40 pm
---	---	4:40 pm	9:45 pm

* Requires transfer at Pier 41 to 9:40am Al Ferry. Return ferries transfer at Pier 41 onto Vallejo Baylink.

TIBURON COMMUTE

TIBURON - S.F. Ferry Building

Depart Tiburon	Arrive S.F. Ferry Bldg.	Depart S.F. Ferry Bldg.	Arrive Tiburon
6:00 a.m.	6:20 a.m.	---	---
6:50	7:10	7:15 a.m.	7:35 a.m.
7:50	8:10	8:15	8:35
8:45	9:05	---	---
---	---	4:25 p.m.	4:45 p.m.
5:00 p.m.	5:20 p.m.	5:25	5:45
5:50	6:10	6:15	6:35
6:40	7:00	7:15	7:35
9:20 *	10:05 *	8:55 *	9:15 *

* Fridays only - Friday North Bay Getaway

ROCKETBOAT

Seasonal May through October

Depart from Pier 39

12:00 p.m.	12:45 p.m.	1:30 p.m.	2:15 p.m.
3:45	4:30	5:15	---

FARES:

Adult (age 19 and over)	\$24.00
Junio (12 - 18)	\$20.00
Child (5 - 11)	\$16.00

*Height restrictio. Children must be at least 40 inches tall to ride.

SAUSALITO

FISHERMAN'S WHARF, PIER 41

Weekdays			
Depart S.F. Pier 41	Arrive Sausalito	Depart Sausalito	Arrive S.F. Pier 41
10:40 a.m.	11:10 a.m.	11:15 a.m.	11:45 a.m.
12:35 p.m.	1:05 p.m.	1:15 p.m.	1:45 p.m.
2:05	2:35	2:45	3:10
3:20	3:50	4:00	4:55
5:05	5:35	5:45	6:15
---	7:55	8:00	8:20
8:40 *	9:35 *	9:40 *	10:20 *

*Fridays only - Friday North Bay Getaway

Weekends and Holidays

Depart S.F. Pier 41	Arrive Sausalito	Depart Sausalito	Arrive S.F. Pier 41
10:50 a.m.	11:20 a.m.	11:30 a.m.	12:00 p.m.
12:15 p.m.	12:45 p.m.	12:55 p.m.	1:25
2:15	2:45	3:00	3:30
3:40	4:10	4:20	5:10
---	---	5:00	5:30
5:20	5:50	6:00	6:55
7:05	7:40	7:45	8:40

No service on Thanksgiving Day, Christmas Day, and New Year's Day / Weekend Schedule on Presidents Day

FARES: One-way Round-trip

Adult	\$10.50	\$21.00
Child (5-11)	\$6.25	\$12.50

For the most current schedule, visit <http://www.blueandgoldfleet.com/Ferry/Sausalito/index.cfm>

TIBURON - Pier 41/ SF Ferry Building

Weekdays

Depart S.F. Ferry Bldg	Depart S.F. Pier 41	Arrive Tiburon	Depart Tiburon	Arrive S.F. Ferry Bldg	Arrive S.F. Pier 41
11:45am	10:50am	11:10am	11:15am	11:35am	12:00pm
---	12:10pm	12:30pm	12:35pm	---	12:55
---	1:05	1:25	1:30	---	2:05
---	2:15	2:35	2:40	---	3:20
---	3:20	4:15	4:25	---	4:55
---	4:05	4:45	---	---	---
7:15	---	7:35	7:45	---	8:20
8:55*	8:40*	9:15*	9:20*	10:05*	10:20*

* Fridays only - Friday North Bay Getaway

TIBURON Weekends and Holidays

Depart S.F. Ferry Bldg	Depart Pier 41	Arrive Tiburon	Depart Tiburon	Arrive S.F. Ferry Bldg	Arrive Pier 41
9:20 am	9:45 am	10:30 am	10:40 am	11:10 a	11:35 a
11:20 am	11:45	12:40 pm	12:45 pm	---	1:20 pm
---	2:10 pm	2:45	2:55	---	3:50
---	3:40	4:30	4:40	---	---
---	5:20	6:15	6:25	---	---
---	7:05	8:00	8:05	---	8:40

FARES: One-way Round trip

Adult	\$10.50	\$21.00
Child (5-11)	\$6.25	\$12.50
20 Ticket Commute Book	\$140.00 (Mon. - Fri.)	

Baylink Ferry

VALLEJO

VALLEJO - SAN FRANCISCO

Weekdays

Depart Vallejo to S.F. Ferry Building	Depart S.F. Ferry Bldg. to Vallejo	Depart Pier 41 Fisherman's Wharf to Vallejo
5:30 a.m.	6:35 a.m.	---
6:30	7:35	---
7:00	8:30	---
7:45	8:55	---
10:00	11:20	11:45 a.m.
11:30	12:45 p.m.	---
2:00 p.m.	3:30	3:10 p.m.
3:00	4:30	---
4:05	5:15	---
4:45	6:00	---
5:45	7:15	6:55

Summer Weekends & Holidays (May - Oct)

8:30a.m	10:00 a.m.	9:40 a.m.
10:00	11:10	11:30
11:30	12:40	---
2:00 p.m.	3:10 p.m.	3:30 p.m.
3:30	5:00	4:40
5:15	6:30	---
7:30	9:00	8:40

FARES: One-way

Adult (13-64)	\$13.00
Senior (65+)/Disabled/Medicare	\$6.50
Child (6-12)	\$6.50
Baylink DayPass	\$24.00
Baylink Monthly Pass (Bus / Ferry) w/Muni	\$290.00
	\$345.00

Call (707) 64-FERRY or visit www.baylinkferry.com for updated information.

Travel time between Vallejo and San Francisco is approximately 60 minutes.

Red & White

BAY CRUISE Mar 31- May 24

Pier 43 1/2

Monday through Sunday	FARES:
10:00 a.m.	Adult (18+) \$22.00
10:45	Youth (5-17) \$16.00
11:15	Child (under 5) Free
12:00 p.m.	Family Pass \$69.00
12:30 *	(2 Adult + 4 Youth)
1:15	* Weekends Only

Harbor Bay Ferry

EAST END OF ALAMEDA/S.F.

Depart Harbor Bay Island	Arrive S.F. Ferry Bldg.	Depart S.F. Ferry Bldg.	Arrive Harbor Bay Island
6:30 a.m.	6:55 a.m.	7:00 a.m.	7:25 a.m.
7:30	7:55	8:00	8:25
8:30	8:55	4:35 p.m.	5:00 p.m.
---	4:30 p.m.	5:35	6:00
5:05 p.m.	5:30	6:35	7:00
6:05	6:30	7:35	8:00
7:05	7:30	---	---

No weekend service

FARES:

Alameda Harbor Bay Ferry passengers can purchase Ferry tickets, passes and books on board the ferries. Alameda Harbor Bay Ferry accepts cash, checks, Visa, Mastercard and Commuter Checks as payment for ferry tickets.

Fare:

One-way Adult	\$6.50
One-way Juniors (5-12)	\$3.25
Children (under 5)	Free
One-way Seniors (62 & over)	\$3.75
Disabled	\$3.75
Active Military	\$5.25
One-way Commute (book of 10)	\$55.00
One-way Commute (book of 20)	\$100.00
Monthly Pass (book of 40)	\$185.00
Free MUNI and AC Transit Transfers Provided	

Angel Island Ferry

TIBURON - ANGEL ISLAND

Weekdays (May 1, 2011 thru October 16, 2011)

	10:00 a.m.	11:00	1:00 p.m.	3:00
Returning	10:20 a.m.	11:20	1:20 p.m.	3:30

Weekends (May 1, 2011 thru October 16, 2011)

	10:00 a.m. - 5:00 p.m.	Hourly
Returning	10:20 a.m. - 5:20 p.m.	Hourly

FARES:	Round Trip	(*Limit one free child, ages 2 and under, per paying adult.)
Adult (13 and over)	\$13.50	
Child (6 - 12)	\$11.50	
Children (3 - 5)	\$3.50	
Toddlers (ages 2 and under)	Free*	
Bicycles	\$1.00	

For the most current schedule and other information, visit <http://www.angelislandferry.com/>

Schedule Subject to change w/o notice



Fun on Ferries, Shoreline Snacking and Shopping, Take the Kids, Bikes on Boats, Fun on Ferries...

www.baycrossings.com

AROUND THE BAY IN AUGUST

Rhapsody in Blue

Join the Exploratorium on Thursday, August 4, from 6 to 10 p.m., for After Dark: Blue. Part of the ColorFest celebration, this After Dark will explore the many manifestations of blue: from blue skies to the creation of indigo dye, the physics of underwater vision – and live blues music! From azure skies to the royal use of indigo blue, spend an evening exploring the science and moods of the color blue. Luxuriate in feeling blue while taking in the cool sounds of local blues musicians Bobby “Spider” Webb and Fillmore Slim. Watch dye demonstrations, from tie-dye to henna, and find out why the sky and water appear blue, and much more. After Dark is for adults 18 years and older, and is included in the price of admission to the Exploratorium. After Dark, an adult evening program on the first Thursday of every month, mixes cocktails, conversation and adult-oriented programming in science and the arts. Each night showcases a different theme, which might include live performances, films and new media, or feature cutting-edge technology and unexpected extravaganzas. Programs are playful, unique and content-rich, addressing the science behind topics of adult interest—from gambling, alcohol, fashion and sex to extreme sports and gaming. Not a theater, a cabaret, or a gallery, After Dark involves aspects of all three, with a mood unlike anything else in the city. For more information visit www.exploratorium.edu/afterdark.

Dancing Under the Dome

The high profile Rotunda Dance Series brings the Bay Area’s most acclaimed dance companies to San Francisco City Hall’s rotunda space for free noon-time performances taking place the first Friday of each month. The August event will feature Parangal Dance Company, a Filipino folk dance group based in the Bay Area. Enjoy this dynamic lunchtime dance performance amidst the grandeur of San Francisco City Hall—Friday,

August 5 at noon. This free public performance is part of the Rotunda Dance Series, a partnership between Dancers’ Group and World Arts West with San Francisco’s Grants for the Arts and San Francisco City Hall.

Oakland’s Art & Soul Festival Launches Second Decade

The City of Oakland’s Art & Soul Festival kicks off its second decade on August 20 and 21. A dazzling array of talent, food from all over the globe, more than 150 artisans and the largest family fun zone of any festival in the Bay Area will be featured. Art & Soul will deliver non-stop music as diverse as the city itself. Thanks to its stellar musical lineups, abundant parking, easy BART access and the bargain price of just \$10 per day (\$15 at the door) general admission, Art & Soul has been named the Bay Area’s “Best Festival” by *East Bay Express* for 10 consecutive years. Tower of Power headlines the Art & Soul Main Stage on Sunday and other acts include Five for Fighting, Marc Broussard, Shawn Mullins, Scars on 45 and Bay Area-based the Heavenly States. New to Art & Soul this year is the WomenGig Stage hosted by popular comedienne Marga Gomez on Saturday. This stage is dedicated to promoting rising female musicians to Bay Area audiences. A family paradise, the festival boasts the largest family fun zone of any festival in the Bay Area and free festival admission for ages 12 and under. The family fun zone is jam-packed with interactive activities for children of all ages, as well as kid-friendly carnival games, inflatable bouncers and hands-on activities to create their own art to take home. Every year, Art & Soul Oakland features hundreds of artisan and vendor booths as well as a mouth-watering array of food reflecting the rich cultural diversity found in Oakland. The festival, running from noon to 6 p.m., is centered in Frank Ogawa Plaza and City Center encompassing 10 strollable city blocks. Admission for adults is \$10 per day online if purchased by August 19 and



\$15 per day at the door. Seniors and youth (ages 13-17) are \$5 per day online and \$8 per day at the door. For more information or advance tickets visit www.ArtandSoulOakland.com or call (510) 444-CITY.

IndyCar Series Roar into Sonoma

IndyCar revs up for Sonoma as the cars and stars of the Indianapolis 500 invade Infineon Raceway for the seventh consecutive year at the Indy Grand Prix of Sonoma on August 26-28. Drivers like Dario Franchitti, Helio Castroneves and Danica Patrick will reach speeds in excess of 170 mph on the most challenging road course on the circuit. Sparks are sure to fly when these rocket ships blast around the serpentine circuit. Enjoy a full weekend of racing with the Historic Grand Prix, Formula Car Challenge, Star Mazda Championship and SCCA World Challenge. In addition to the on-track racing, fans will enjoy Military Appreciation Day, an autograph session and more. Open-wheel greats Al Unser Jr., Rick Mears and Johnny Rutherford will also be honored as part of the season-long Legends in Sonoma program. For ticket prices and schedule information, visit www.infineonraceway.com.

Tiburon Art Festival

Get ready for the Fifth Annual Tiburon Art Festival on historic Ark Row in downtown Tiburon. Sixty-four juried artists, live music, family entertainment, wine, beer and champagne, all steps away from the waterfront of the San Francisco Bay. The event takes place on Saturday and Sunday, August 27-28 from 11 a.m. – 6 p.m. For more information visit www.tiburon-artfestival.com

Fair Enough

Get ready for nightly fireworks and free concerts in Vallejo from August 3-7. The Solano County Fair is a show-stopper with livestock auctions, the Solano Community Showcase Talent Show, Blue Ribbon competitions and a family-friendly, traditional county fair vibe, Solano County Fair is an easy choice for a summer adventure. This year’s entertainment includes Air Supply, Dokken and the Family Stone. The theme is “There’s No Place Like Home,” so click your heels and head on over to the Solano County Fair. Adults: \$8, youth 6 to 12: \$4, kids 5 and under: free with a paid adult. Parking is \$7. For more information visit www.scfair.com

To have your event or announcement considered for the Bay Crossings Around the Bay listings, please send information or a press release to: joel@baycrossings.com.

What Are You Waiting For?

Use **FasTrak[®]** and **Clipper[®]**
to **Cut the Hassle of**
Getting There



Get your FasTrak[®] toll tags at Safeway, Walgreens and Costco locations, or go to bayareafastrak.org or 511.org.



Get Clipper[®] – the new all-in-one transit fare card – at select Walgreens stores and other retail locations or at clippercard.com and 511.org.

Visit Clipper's full-service Customer Care Centers at the S.F. Embarcadero BART station and the Bay Crossings Store at the S.F. Ferry Building.

Sponsored by Metropolitan Transportation Commission — www.mtc.ca.gov

“There’s Still An Extraordinary Amount Of Work To Be Done.”

San Francisco Mayor Gavin Newsom, on the 34th America’s Cup, January 5th, 2011.



We agree. To make the 34th America’s Cup event succeed, it will require the efforts of extraordinary people, and companies with extraordinary resources. We are The Bay Maritime Group, uniquely qualified to help make the America’s Cup event “a race that is often hard to see a race impossible to miss.”

Our group of companies offer complete ship repair, repowering, hull and house maintenance, machine shop and steel fabrication; propeller maintenance, painting and sandblasting. We operate a 2800 ton Drydock, a 1200 ton Syncrolift® with a dozen on-land berthing stations, and a 100-ton Marine Travelift®. Our in-house engineering department provides new vessel design and engineering, designs in Power and Sail for both sailboat racing or cruising.

Our goal is absolute customer satisfaction, giving them exactly what they want – and they all want something different. Same goes for the America’s cup – a unique event that will require unique skills from everyone involved.

We’re ready to get to work today. Call Ira Maybaum at (510) 337-9122 and let’s get started.

==== *“We are the 21st Century Shipyard”* ====

THE BAY MARITIME GROUP



2900 Main Street, #2100 • Alameda, CA 94501 • www.bay-ship.com
Ask about our new Treasure Island facility

www.baymarineboatworks.com
Richmond, CA | 510-237-0140