



BAY CROSSINGS

"The Voice of the Waterfront"

June 2007 Vol.8, No.6

Air Cargo Traffic

Expansion vectors toward
non-metropolitan airports

Biking Waterfront Trails

China Camp has a trail for any rider

Saving the Whales

Efforts to free the
ocean's gentle giants

Experience Sailing

It's the perfect time to
try the water

Summer's Contrast & Light

Complete Ferry Schedules for all SF Lines

A new neighbor is coming to a great neighborhood.

Oakland's skyline will never be the same again. A bold and beautiful new community is rising in the heart of vibrant Chinatown. Now selling large and luxurious condominium homes with spectacular bay and city views. Priced from the high \$300,000s. The Sales Center at 407 8th Street is open Saturday through Thursday 10 to 5 and Friday 10 to 6.

www.8-Orchids.com 510-835-8808



Exclusively represented by The Reiser Group



Voted Best Restaurant 4 Years Running



**Lunch & Dinner Daily
Banquets Corporate Events**

www.scomas.com (415)771-4383

Fisherman's Wharf on Pier 47 Foot of Jones on Jefferson Street



WHO HAS THE MOST SMILES PER GALLON?

Photo by Charlie Bergstadt

For 15 years Adventure Cat has been sailing the Bay, Sparing the Air and Saving the Planet 3 times a day, 7 days a week!

**Come join the fun on Adventure Cat,
the best way to Sail the Bay!**

For more information and cruise times
call 800-498-4228 www.adventurecat.com
sharon@adventurecat.com

Cruises leave from pier 39 (right next to the Sea Lions)

Ahhhh...

The Open Water Ahead and BoatU.S. Insurance Behind You.

Developed for boaters by boaters, an insurance policy from BoatU.S. provides peace-of-mind coverage you won't find with other companies.

- **Low-Cost Policies**—for all boats, Yacht to PWC. PLUS discounts for USCG, USPS and other approved boating safety courses—up to 30%
- **Customized policies for Anglers** featuring fishing equipment coverage
- **24-Hour Claims Service** from Boating Experts
- **Acclaimed Damage Avoidance Program**—featuring boat and life-saving tips taken from our insurance case files

It's worry-free waters ahead with the insurance specialists at BoatU.S. behind you.



Policies subject to limits and exclusions.

Call for a fast, free quote today!

800-283-2883

Priority Code: 4850

or apply online at BoatUS.com/insurance

Escape the City



Enjoy a Spectacular Cruise on the Bay and a Relaxing Lunch at Guaymas on the Waterfront in Tiburon

\$27.50 per person includes lunch and roundtrip ferry service

Enjoy lunch at Guaymas waterfront restaurant located right at the Tiburon Ferry Terminal*

Weekdays: Leave from the Ferry Building at 10:35AM or Pier 41 at 11:00AM, Arrive Tiburon at 11:40AM.
Return to Pier 41 on the 1:50PM or 3:05PM ferry or spend the day and return to the Ferry Building on the 5:00PM Tiburon departure.

Weekends: Leave from the Ferry Building at 11:20AM or Pier 41 at 11:45AM, Arrive Tiburon at 12:30PM
Return to Pier 41 on the 2:40PM ferry or spend the day and return to the Ferry Building on the 4:20PM Tiburon departure.

*\$20 Guaymas certificate is provided for lunch, gratuity not included.

Tickets available exclusively at the Bay Crossings Store in the San Francisco Ferry Building starting May 14th (415) 362-0717

REDISCOVER THE GREAT OUTDOORS



Single-family homes from the high \$600,000s*.

Condominiums from the low \$500,000s*.

866.463.4009

DISCOVERMAREISLAND.COM

ISLAND LIVING IS CLOSER THAN YOU THINK



MARE ISLAND VALLEJO, CALIFORNIA

*Based on current incentives and availability. Certain restrictions apply. Prices effective as of publication deadline. | **DIRECTIONS:** From I-80 in Vallejo, take I-780 west, which becomes Curtola Parkway, and then Mare Island Way. Turn left onto Mare Island Causeway. Cross the bridge and follow the signs to the Welcome Center, which is open Thursday-Sunday from 10AM to 6PM. Call 866-463-4009 for model homes hours.



columns

- 8** TECHNOLOGY
by Mary E. Shacklett

- 12** BREW REVIEW
by Joel Williams

- 13** LIBATIONS
by Dianne Boate &
Robert Meyer

- 17** SAILING ADVENTURES
by Scott Alumbaugh

guides

- 15** FERRY BUILDING MARKETPLACE
Map to navigate the sunlit nave

- 19** WATERFRONT ACTIVITIES
Our recreational resource guide

- 22** WTA FERRY SCHEDULES
Be on-time for last call

- 26** AROUND THE BAY
See, be, do

sponsored stories

- 09** PORT OF OAKLAND - JACK
LONDON SQUARE

- 10** CITY OF RICHMOND

- 24** METROPOLITAN
TRANSPORTATION
COMMISSION (MTC)

news

- 05** INDUSTRY NEWS
News and events from
the working waterfront
By Patrick Burnson

- 06** AIR CARGO
Expansion heading to
Bay Area's alternative
airports
by Patrick Burnson

- 07** FERRY NEWS
Service extended to
weekends
Helping hand extended
to nude swimmer

- 18** BIKING THE
WATERFRONT
TRAILS
China Camp for all
levels of trail riders
by Dan Sankey

green pages

- 14** SAVING THE
WHALES
Pulling out all the
stops to free stuck
mammals



Northview from the top of a Nike silo down to the San Pablo Bay below. Photo by Dan Sankey. See story, page 18.

Joyce Aldana, Publisher
Bobby Winston, Proprietor
Joel Williams, General Manager
Michelle Moday, Editor

ADVERTISING & MARKETING

Joel Williams, Advertising & Marketing Director

GRAPHICS & PRODUCTION

Francisco Arreola, Designer / Web Producer

ART DIRECTION

Francisco Arreola; Michelle Moday

WORKING WATERFRONT

Patrick Burnson

COLUMNISTS

Dianne Boate & Robert Meyer;
Joel Williams; Mary E. Shacklett;
Scott Alumbaugh; Thaddeus Barsotti

WRITERS & PHOTOGRAPHERS

Bill Picture; Camper English; Dan Sankey;
Dennis Anderson; GraceAnn Walden;
Graham Clayton; Guy Span; JB Powell;
Kristen Bole; Loren Earle-Cruikshanks;
Michelle Moday; Scott Hargis

ACCOUNTING

Cindy Henderson

Subscribe:

By mail: \$45 / year (12 monthly issues)
Online: www.baycrossings.com/subscribe.asp

Advertising Inquiries:

(707) 556-3323, joel@baycrossings.com

Bay Crossings
Ferry Building, #22
San Francisco, CA 94111
www.baycrossings.com

A Division of Nematode Media, LLC

Bay Crossings Wants to Hear from You

If you have a story idea you would like to see covered, or wish to write something for *Bay Crossings*, please let us know. We want to know what matters to you. We are interested in stories based on waterfront happenings, obscure Bay Area destinations, Bay Area waterfront news, or anything that you feel is particularly fascinating. Please send comments and letters to editor@baycrossings.com.

Corrections & Letters

Please send comments, letters or requests for corrections to editor@baycrossings.com

PHOTO FEATURE

Something catch your eye?

Stunned as we are by the beautiful images we see all of the time around the Bay? What makes you grab your camera? Send us your photo (jpg or tiff) to be considered for publication in *Bay Crossings* to: Photo@baycrossings.com. Include your Name, your City, Location of photo. Photographers will be notified via email if chosen.



BY PATRICK BURNSON

Fritz Institute Launches Bay Area Preparedness Initiative

Lynn Fritz, who made his fame and fortune by anticipating change in the global supply chain arena, has been using that same skill set to redefine emergency logistical support for this community. In what is being hailed as the first cross-sector disaster preparedness partnership of its kind, The Fritz Institute has launched "The Bay Area Preparedness Initiative" as a national model for disaster relief. Although specific Bay transport and shipping partners have yet to be identified, Bay Crossings was told that they would be included in a coalition comprising leaders from government, private industry, and the nonprofit and philanthropic sectors. According to spokesmen, all will be working together in a structured, multi-disciplinary way to identify weak links in preparedness and collaborate in developing local evidence-based solutions that address those gaps.

www.fritzinstitute.org

Port of Oakland Finally Gets DHS Respect

The Department of Homeland Security's Office of Grants and Training, which had up until now given less funding to Oakland than much smaller ports, has finally come through with some cash. Port officials were relieved to discover late last month that they will receive \$5.6 million for its "Infrastructure Protection Program. This includes the creation of a wireless backbone for its communication network and an upgrade to the intrusion detection system (cameras and video analytics, etc.). Thanks in large part to the political pressure exerted by State

Senators and the Governor, the port will get 75 percent of the cost for each project. www.portofoakland.org

AgTC Has New Reason for Fighting Container Tax

Opponents of SB 974, which will impose a \$30 tax on container vessels entering or leaving the Port of Oakland, have long argued that it will divert cargo away from our major cargo gateway. Now the Agriculture Transportation Coalition is joining others in saying that the "sin tax" will also have dire consequences for the environment.

"California exports a significant amount of waste paper which is recycled overseas," an AgTC spokesman said. "This is a result of state and local statutes, regulations and programs that aim to reduce the amount of solid waste going into landfills. California is constantly seeking new ways to expand both government and private recycling programs. In fact, California even has the Recycling Market Development Zone program which provides free loans, technical assistance and product marketing to companies that develop recycling programs in California."

The value of this commodity is quite low, added the AgTC, and the tax imposed by SB 974 would "significantly reduce the profitability of this business that helps the state meet source reduction goals."

The AGTC stages its annual meeting in San Francisco early this month. The event's invited luncheon speaker, Sen. Allan Lowenthal, sponsors the bill.

www.agtrans.org

Watch This Space for Upcoming News

- Agricultural Shippers' Conference
- Bay Area "Niche" Cargo Centers
- Local Shipper Business & Events



Bay Area Ports Awarded Millions in Homeland Security Grants

SAN FRANCISCO – The Port of San Francisco announced that it has been awarded \$1.52 million from the Department of Homeland Security (DHS) for port security enhancements. The award is part of a \$15.8 million port security grant program for Bay Area ports, including Oakland - \$5.6 million, Richmond - \$2.3 million, and Stockton - \$3.3 million.

According to the Port of San Francisco's Director of Homeland Security Sidonie Sansom, the funds will be used for additional security fencing along the Port's 7½ miles of waterfront property. The Port of San Francisco has received a total of \$11.2 million in homeland security grants since 2002.

"The Port is very pleased to receive the DHS port security awards," said Monique Moyer, Port Executive Director. "We are especially thankful to our local elected officials - Mayor Gavin Newsom, Senator Barbara Boxer, Senator Dianne Feinstein, Representative Barbara Lee, (D-Oakland) and Representative Ellen Tauscher, (D-Walnut Creek) for their unwavering support for securing funding for Bay Area ports," said Moyer.

In October 2006, the last round of federal funding for port security, the Port of San Francisco and the Port of Oakland did not receive any funds. Due to the efforts of local officials, risk assessments for Bay Area ports were revisited and each received grants in this latest allocation of federal Homeland Security funds.

Source: Port of San Francisco

Annual "Airline Fair" Hits Big by Any Measure

BY PATRICK BURNSON

The San Francisco Air Cargo Association's annual "Airline Fair," staged near SFO last month, generated a lot of goodwill and fellowship, but also was freighted with a new sense of urgency. "Obviously, this trade community is going to be growing in the near future," said SFACA president, Linda Frankal, "and the timing of our event could not have been better." That's because even the mainstream media here had played up the FAA's recent

report on air cargo infrastructure – or more pointedly, the lack thereof. SFO and Oakland International Airport, in fact, were two major load centers cited in a statement made by U. S. Secretary of Transportation, Mary E. Peters, as being in immediate need of expansion.

In her comments on the FAA report, "Capacity Needs in the National Airspace System," Peters said that the San Francisco Bay area is among those regions where existing airports are constrained by urban development.

"This study makes it clear that we need to develop solutions that match travelers with the best way to get to their destinations," Peters said. "We must find a way to turn this challenge into an opportunity to keep our families free to travel and our businesses free to succeed."

This was the FAA's second report in three years, and came basically to the same conclusion: San Francisco and Oakland shippers will need to have access to alternative airports if the metropolitan area

The Bay Area will "be an example of a capacity-constrained metropolitan area where runway construction may not be an option over the next decade,"

continues to expand at its current pace.

Looking around the "Airline Fair," one could see evidence that more carriers are going to be vying for cargo here. Southwest Airlines, for example, has returned after being away for several years. And while no one from Virgin America was here, (it will begin service later this year) the carrier's Atlantic Cargo representative was busy promoting the existing SFO-Chicago service.

According to the FAA report, Oakland International Airport will need to add capacity in the next eight years in addition to the ongoing improvements now underway. Airport spokesmen noted that the \$300 million expansion project – adding five new gates – is nearing

completion, but allowed that most of the work has been "passenger focused."

The Bay Area will "be an example of a capacity-constrained metropolitan area where runway construction may not be an option over the next decade," the report stated. "In these cases, demand management, regulatory or economic solutions and other market mechanisms need to be investigated."

As a consequence, both SFO and Oakland officials are working with Mineta San Jose International Airport planners on a regional strategy to accommodate more cargo business. Among those sites being considered as safety valves are small local airports in Concord and elsewhere in the East Bay.

MUIR WOODS SHUTTLE BUS Added Service from Sausalito Ferry!

You deal with the breathtaking scenery...We'll handle the traffic!

Route 66 runs from Sausalito Ferry, Marin City and Manzanita Park-and-Ride to beautiful Muir Woods.

Marin City/Manzanita Route

Frequent service between 9:30 am and 7:00 pm on weekends and holidays from **May 5 to September 30, 2007.**

Sausalito Ferry Route

Service between 11:00 am and 6:30 pm on weekends and holidays from **May 26 to September 3, 2007.**



BUS ROUTE



ROUND TRIP FARE

\$2 Adult

\$1 Seniors (65+)/

Disabled/Youth (6-18)

For complete schedules or information, please call **511**

(say "Golden Gate Transit" then "operator"), TDD 711

or visit **www.goldengate.org**



Expanded Angel Island, Tiburon Ferry Running

The Blue & Gold Fleet's weekend "Farmers' Market" service that connects Tiburon with the Ferry Building is set and running. The service from the Ferry Building to Tiburon and Angel Island began last month.

As usual, the Tiburon Ferry also provides weekday commuter service to the Ferry Building with its four morning arrivals and four afternoon return trips.

The expanded schedule adds a 10:35AM departure by way of Sausalito, arriving at Tiburon at 11:40AM, and now includes direct service connecting Tiburon with San Francisco's renowned Saturday Ferry Plaza Farmer's Market.

Weekend service departs Tiburon at 10:40AM with return service at 1:45PM. Sunday service connecting Tiburon and the Ferry Building will also be available.

In addition, Blue & Gold and Guaymas, a waterfront Mexican restaurant with spectacular views of the SF skyline have teamed up to promote the new run by offering an "Escape the City" lunch special. It includes a round trip ferry ticket and lunch for \$27.50 per person. Tickets are available at *Bay Crossings'* store.

For complete a schedule or more information about Blue & Gold Fleet, visit www.blueandgoldfleet.com.



Visit and shop the Bay Crossings store!

Located at the center of the Ferry Building Marketplace

Naked Woman Rescued By Golden Gate Ferry

SAN FRANCISCO -- The crew of the high-speed Golden Gate Ferry Del Norte rescued a naked woman who was swimming in the channel in the area of Paradise Cay last month, the Golden Gate Bridge Highway and Transportation District reported.

District spokeswoman Mary Currie said there were 300 people on board the ferry that departed Larkspur around 6:35AM, and made a detour when the woman was spotted in the channel.

Currie said the woman was waving her arms and appeared to be in distress. She was taken aboard then transported by ambulance to a hospital when the ferry docked at the San Francisco terminal at 7:30AM. The woman was exhibiting signs of hypothermia, Currie said. She also said the district's ferries stop whenever a rescue is needed and that rescues happen occasionally.

Source: *Bay City News*



OLD GOLD
17 Main St., Tiburon
info@oldgoldjewelry.com
Phone: (415) 789-9583

Where you will find beautifully detailed jewelry fabricated in the original art form of die striking and hand chasing. OLD GOLD exhibits an extensive selection of contemporary jewelry by award-winning American and European designers. As recommended by Frommer's and the New York Times, "...a romantic journey for exceptional jewelry."

BLUE & GOLD FLEET

415.773.1188

www.blueandgoldfleet.com



The enchanting nautical experience begins when passengers board Blue & Gold Fleet boats that sail on San Francisco Bay. Blue & Gold Fleet is the largest excursion and commuter ferry service provider in the Bay Area.



San Francisco Bay Cruise Adventure An hour long cruise along the City's historic waterfront, right past the PIER 39 sea lions, under the Golden Gate Bridge, by Sausalito, past Angel Island and around Alcatraz.

Sausalito & Tiburon A comfortable ride across the San Francisco Bay to the two Marin seaside villages of Sausalito and Tiburon to enjoy shopping, dining or an easy stroll around town.

Angel Island A California State park and wildlife reserve. Angel Island is both a great picnic destination with hiking, kayak tours, an hour-long fully-narrated TramTour, as well as a historical site dating back to the U.S. Civil War.

Vallejo Sail to Vallejo, a waterfront community that includes the city's Heritage District, Vallejo Naval and Historical Museum and family-friendly Marine World amusement park.

Alameda & Oakland There's dining in Jack London Square, the Farmer's market on Sundays and jazz nightly.

**Blue & Gold Fleet at PIER 39
 Beach Street & The Embarcadero
 San Francisco**

Using the Internet on Your Boat

BY MARY E. SHACKLETT

Access to the Web is all-pervasive, and an everyday “staple” to most of us. We use the Web to communicate with friends and business colleagues, to surf, to research information, and to play games, trade stocks and download music and movies.

Recognizing this, most marinas now furnish DSL access for WIFI Internet, giving boaters who stay within 25 miles of these modems access to the virtual world. However, Internet WIFI access requires several logistical measures that land-based Internet does not.

Installing Internet Access on Your Boat
Most boaters first approach maritime

Internet as a simple exercise of getting a laptop with a wireless card on board, figuring that they can tie into various marinas’ DSL services. It is not that simple, since WIFI access requires a clear line of sight, and sailboats and other objects passing through the line of sight will disrupt signaling. So will the unsteadiness of floating on the water and the radio-wave resistance of metal hulls—since most Internet users on boats prefer to do their work inside their cabins.

“Especially if you are a cruising boat, staying in a good range for DSL connections with marina DSL modems is a challenge,” said John Navas, a San Francisco-based technology consultant specializing in high-speed communications—and a long-time boater. Navas’s Website, www.wikia.com, focuses on WIFI on boats and is

an open forum for bloggers who wish to contribute to the subject.

“If you’re sitting on your deck and using a laptop with a wireless card to communicate with a marina DSL modem, you can expect a range of 300-350 feet if your line of sight for the communications remains clear,” said Navas. “However, if you are in the cabin of a metal-hulled boat, this range will be cut in half.”

Navas recommends that boat owners who want Internet access install an antenna on the boat’s masthead so they can dramatically improve signal strength. “By disabling your normal wireless access card, and purchasing an antenna and an adaptor, you can easily double your signal range,” said Navas.

Antennas come in various sizes, and are measured by their dBi (decibels over isotropic antenna). The dBi is a measurement that indicates the degree that signal strength is boosted over that of a standard antenna. For example, a 6 dBi antenna will double the WIFI range of your laptop. The maximum dBi strength of current commercial antennas is 14 dBi. Navas says that most boat owners will be satisfied with an antenna in the 7-8 dBi range. Those going for the greatest quality possible with antenna-based technology can opt for antennas in the 12-14 dBi range.

“There are two ways to use an antenna on your boat,” said Navas. “You can choose to go wireless between your masthead antenna (connected to a wireless cell) and the wireless card in your laptop—but this can cut communications speeds dramatically, and be difficult to install. A better option that is less expensive, with better communications throughput, is a wired solution that connects the laptop in the cabin with the antenna on the masthead with category 5 (cat 5) cable.”

Sailing the Open Seas

Accessing the Internet on the open seas is another issue, since WIFI technology is limited to line of sight communications.

Open seas Internet access requires the use of satellite phones or short wave modems. These are fairly expensive and prepaid dial-up time can cost \$1/minute. This gets into a lot of money since data transfer speeds are only a few thousand

kilobits per second. At best, it is only advisable to send very brief and occasional text messages.

Maritime Etiquette

Finally, there are points of etiquette in maritime Internet access that responsible boaters should be sensitive to:

Avoid downloading movies, music and other large files that can interfere with Internet access for others in the marina you are in. Most marinas only have DSL modems with 1.5 megabyte data pipes—so it isn’t hard to lock other users out with a large file download. The best uses for maritime Internet are text-based email and Web surfing.

Maintain sound security practices. Viruses and hackers are threats at a marina, as they are at the office or at home. As soon as you log onto a WIFI network, you are in an essentially insecure environment. It is recommended that you always contract with a service provider who can provide you VPN (virtual private network) services as part of your Internet subscription package. Working on a VPN ensures that your messages and data are secure.

If you see someone else in the maritime community who does not have security, let him know. “Everyone is using a wide-open WIFI at the marina, and it’s easy to see the music downloads and messages other boaters are doing if they aren’t using secure communications,” said Navas. “This can be very dangerous. As a matter of politeness, I always tell people that I can access their computer so they can take the appropriate steps to secure their communications.”

Don’t just access someone’s accidentally open system. “Unfortunately, there’s a lot of this going on,” said Navas. “If you want to piggyback and share someone’s antenna, ask first.”

Mary E. Shacklett is President of Transworld Data, a marketing and technology practice specializing in marketing, public relations and product management for technology companies and organizations. Mary is listed in “Who’s Who Worldwide” and “Who’s Who in the Computer Industry.” She may be reached at (360) 956-9536 or TWD_Transworld@msn.com.



In the heart of Sausalito on San Francisco Bay

...where diners have been enjoying superb seafood with spectacular water views for over thirty-five years. Scoma's is located on the water in an historic Victorian setting at 588 Bridgeway, two blocks from the ferry dock.

Present this coupon to your server & receive

\$5.00 Off

on any food check of twenty-five dollars or more.

Harvest (415) 332-9551

www.scomassausalito.com

Limit one coupon per table - Not valid with any other offers

JACK LONDON SQUARE



Buy Fresh, Buy Local, the Guide to Bay Area Fresh Food Markets

OAKLAND-- This June the Community Alliance with Family Farmers (CAFF) will be releasing a new local food guide and program for the Bay Area. Buy Fresh, Buy Local will boost farm viability and will bring more transparency to our food system through point of purchase information about the provenance of our region's food. (

program is a partners with farms that sell direct to markets, and the consumers, restaurants, organizations, institutions and retailers that carry and serve local food. A statewide organization, CAFF has been a leader in the farm to institution and local food movement through their expanding Community Food Systems Program Area for the past five years. The Bay Area Buy Fresh, Buy Local program is an expansion from the program's inception on the Central Coast and encompasses the following counties: Alameda, Contra Costa, Marin, Napa, San Francisco, San Mateo, Santa Clara, Solano and Sonoma. In addition to these counties, an additional eight counties are part of the Bay Area's foodshed and include: Merced, Monterey, Santa Cruz,

San Benito, San Joaquin, Stanislaus, Sacramento and Yolo. Retailers and food providers can indicate food grown in these 17 counties as local. The new Bay Area Local Food Guide will be released at the following premier events:



June 9 – The Golden Glass at Fort Mason

Slow Food San Francisco's annual fundraiser. All participants will receive a guide as well as get to taste Italian wines and a variety of regional foods prepared by some of the Bay's top restaurants, food artisans and producers.

www.goldenglass.com

June 10 – Jack London Square Rollout Celebration

Join CAFF, Jack London Square and Pacific Coast Farmers' Market Association as they celebrate the First Edition of the Bay Area's Buy Fresh, Buy Local Food Guide and the rollout of the Buy Fresh, Buy Local program. www.brownpapertickets.com/event/13631

www.caff.org

Source: CAFF



Two Favorite Bay Area Traditions



Everyone knows that Sourdough French Bread is the culinary landmark of San Francisco. But did you know that Colombo Baking Company, est. 1886 in Oakland, has always been recognized as one of the best of the bakeries in the Bay Area?

Still using the same methods as the earliest pioneer bakeries in California, their bread is hand-scored and hearth-baked. They let the slow, even oven heat bring out the crusty goodness of their bread.

You'll enjoy their fresh-baked sourdough bread and rolls with cheese, wine, olive oil or whatever...

Armanino Foods of Distinction is operated by a three-generation San Francisco family. They put lots of love and the highest quality ingredients in all their products, like their yummy meatballs, fresh-made frozen pastas and delicious frozen pesto sauce, made from an authentic, Italian family recipe. Enjoy that fresh basil flavor and aroma, with no preservatives, additives or artificial ingredients.

What a Great Combination. Be Creative!

Recipe of the Month

Basil Pesto Frittata with Garlic Sourdough Bread
Approximate Preparation Time: 30 Minutes. Serves 6

Ingredients:

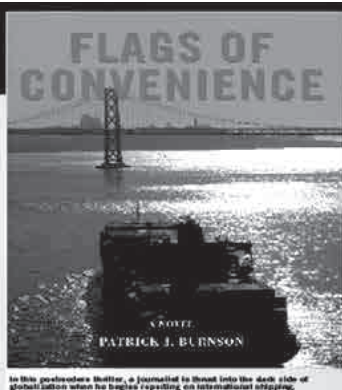
- | | |
|-------------------------------------|---------------------------------------|
| 1 1 oz Armanino Basil Pesto, thawed | ½ cup Prosciutto (or ham), diced |
| 1 ½ cups Spaghetti noodles, cooked | ¾ cup parmesan, shredded |
| 1 cup onion, diced | 1 loaf Colombo Garlic Sourdough Bread |
| 4 eggs, beaten | |
| 4 tablespoons Butter | |

Directions:

This is a great way to use leftover spaghetti noodles. Preheat oven to 375 degrees. Lightly butter a round pie plate or casserole dish and set aside. In a small saucepan, add butter and sauté onions until tender, remove from heat. Add noodles and half the Armanino Basil Pesto to onions and mix. Place the noodle mixture in the bottom of the pie plate. Combine the remaining ingredients and pour on top of the noodles. Bake until set and eggs no longer jiggle. Decorate plates with remaining Pesto. Warm slices of Colombo Garlic Sourdough Bread in the oven for 3-5 minutes and serve with Frittata.

For more delicious recipes, visit sourdoughbread.com and Armaninofoods.com

Just Published... Flags of Convenience A Novel Patrick J. Burnson



Call 1-800-AUTHORS to order, or visit www.iUniverse.com

Summertime Along

With June comes the beginning of summer in the Bay Area and the convergence of humanity to the water and waterfront attractions. The city of Richmond is a waterfront lover's paradise with 32 miles of shoreline offering stunning views of the Bay and the San Francisco skyline and 6,000 acres of City and Regional Parks. Some of the most striking of the Richmond parks are located along its gorgeous shoreline. Another great way to spend some time on the waterfront is to actually get off land and on the water in a boat.

On summer waters

This summer, the city of Richmond welcomes the well established Bay Area boating club and school, Club Nautique to their growing complement of waterfront and maritime businesses.

Club Nautique has been providing top quality, professional instruction at all levels for sailing and powerboating since 1980. They offer everything from the basics to ocean cruising and have just opened their third Bay Area location in Richmond's beautiful Marina Bay in the building that formally housed the Marina Bay Yacht Club on Spinnaker Way.

"We get people who come to us whose goals are to go charter in the Caribbean, people whose goals are just to sail on the Bay, as well as people who want to buy a boat and sail around the world," says David Forbes, general manager of Club Nautique, adding, "We've got lots of graduates sailing around the world."

Club Nautique offers options for those goals: an 8-day course designed for those who want to learn how to sail in the Bay as well as a full curriculum of classes designed for those who want to learn about off-shore sailing in the open seas.

Club Nautique offers freedom from the expense, labor and time investments of yacht ownership by providing a rental fleet of sailing and power yachts to both

the public and their members. Members receive a number of benefits including discounts on classes and charters. They currently offer a charter fleet of 46 sailboats from 25 to 54 feet in length and 5 powerboats from 32 to 44 feet. All boats are fully equipped right down to the dishes and utensils for onboard meals.

The June 9 grand opening will feature live music, food, drinks and free sailboat rides, as well as an open house with an impressive fleet on display. A suggested \$20 donation for boat rides will benefit the Leukemia Lymphoma Society.

Five of Richmond's waterfront parks are linked by a 4-mile stretch of the San Francisco Bay Trail, providing a path for hikers, joggers, bicyclists and skaters. Countless panoramic views are available to those who venture along the trail from Point Isabel Regional Shoreline Park to Lucretia Edwards Shoreline Park on the west side of Marina Bay.

Point Isabel Regional Shoreline Park is the largest off-leash public dog park in the United States with over 500,000 dogs visiting the 21-acre park each year. The park offers plenty of facilities for both humans and their furry friends - including Mudpuppys Tub & Scrub dog wash and pet store featuring a full selection of treats and toys for Fido and the Sit & Stay Café where "people food" is served.

Shimada Friendship Park celebrates Richmond's friendship with its sister city of Shimada, Japan, while Vincent Park offers more panoramic views of the Bay and the San Francisco skyline. Rosie the Riveter Memorial Park, located in what was once the heart of Kaiser Shipyard #2, overlooks the picturesque Marina Bay filled with a plethora of recreational boats. During WWII, 747 war ships were produced here with the crucial contributions of many women. These women are memorialized here in historic photos, drawings and memories of shipyard workers in a framework reminiscent of a Liberty Ship.

On land surrounded by water

Probably the most adventurous and unique waterfront attraction in Richmond is the East Brother Light Station, a fully-functional lighthouse that is over 130 years old. Today, it is also a bed & breakfast inn and definitely a unique location for a summer afternoon getaway. The island, only three-quarters of an acre in size, sits just off the eastern shore of Richmond on East Brother Island, is only accessible by boat. And when overnight guests step onto East Brother Island, they take a step back into maritime history. Small groups are welcomed by the innkeepers and



Club Nautique's new clubhouse location overlooks Richmond's Marina Bay.



The Periwinkle, a 44 foot 2007 Hunter located in Marina Bay, is one of the newest in the Club Nautique fleet.

In addition to the established locations in Alameda and Sausalito, Club Nautique's new Richmond location now provides their members with a convenient, accessible central location just off I-580.

On summer shores

If you'd rather stay dry on land this summer, there are over 50 parks in Richmond where it's perfect to enjoy nature, play and relax..

Richmond's Shoreline

shown to the parlor for champagne and hors d'oeuvres. As the sun begins to set, guests are welcome to ascend the spiral staircase to the lighthouse tower to catch a view of the shimmering San Francisco skyline.

Five rooms are available, with four located in the historic lighthouse itself and one smaller and more rustic room, known as Walter's Quarters, in the fog signal building — away from the main building, it offers a unique sense of privacy.

Once settled in, it's up to the guest to indulge their preferences. Some prefer quiet comfort while others prefer to be more social. Guests can indulge their maritime curiosity by watching a parade of sailboats, tugs or tankers or by browsing the collection of books and historical files about former lighthouse keepers, shipwrecks and sea stories.

"We've got lots of graduates sailing around the world."

- David Forbes, general manager of Richmond Club Nautique

A gourmet multi-course dinner is one highlight of the stay. It is served at a set time in the dining room, providing a great opportunity for guests to get to know one another. Menus and accompanying wines change seasonally but some favorites include citrus-glazed Rock Cornish game hen or Beef and Salmon Wellington in a puff pastry served with a dill Hollandaise sauce. Breakfast is also a culinary work of art. Early birds are rewarded with piping hot popovers. A full breakfast is served in the dining room for all guests, which often includes the house specialty - Lighthouse French Toast Soufflé.

Those who want to visit the Island, to picnic or to fish or just for an interesting excursion, and not stay overnight, can take a day trip on Saturdays during the summer months. For \$20 per person, including boat transportation, visitors can spend about four hours on the island. For more information on East Brother Light Station, go to www.ebls.org.

Richmond Community Redevelopment Agency
Office of Economic Development
(510) 307-8140 Richmondca4business.com



Photo by Joel Williams

Happy sailors return to Marina Bay while enjoying beautiful views of the San Francisco skyline.



Photo by Joel Williams

Richmond's Marina Bay is in a convenient, accessible central location just off I-580.



Photo by Joel Williams

The San Francisco Bay Trail leading from Shimada Park to Point Isabel Regional Shoreline Park.



Photo by Joel Williams

Setting sail from Richmond's shoreline allows easy access to San Francisco, Marin County and the North Bay.



Photo by Joel Williams

Stunning Bay views for you and your dog are abundant from Pt Isabel Regional Shoreline Park.



Photo by Joel Williams

Just off of Richmond's shoreline, East Brother Light Station feels like worlds away from home.

Marin Brewing Co.

Good beer choices at Larkspur Landing

BY JOEL WILLIAMS

Brendan Moylan, brewer and owner of The Marin Brewing Company, knew he wanted to open a brewpub after he visited Buffalo Bill's Brewery in Hayward in the mid 80's when he was still a beer salesman. According to Moylan his reaction was, "Oh my God, he's got a bar, he's got a brewery and the brewery makes beer for the bar and there all in the same building. This is great! I gotta do this." The seed was in his head from that point on, and he made a promise to himself that he was going to create his own brewpub. It took about two or three years, but Moylan made good on his commitment.

Moylan opened The Marin Brewing Company, Marin County's first brewpub, on April Fools Day 1989. It proved to be no joke -- 18 years later it is a staple of the Larkspur Landing Shopping Center just across the street from the Larkspur ferry terminal.

Moylan is a Bay Area native who was first bitten by the "good beer" bug when he worked as the beer manager supervising one of the largest beer selections in San Francisco. This position he held at Jug Shop Liquors from 1978-1983 led to a job with one of the largest specialty beer distributors and stint as a draft technician and merchandising manager for Spaten West, Inc. He then became a member of the San Francisco's homebrew club and served as its president in 1986.



Photo by Joel Williams

Noonan's Bar and Grill boasts over 1000 varieties of liquor

In 1989 he opened Marin Brewing Company, and over the years its beers have won far too many awards to list. All of their beers are available on tap and in 22 ounce bottles on a rotating basis. When I stopped by there were six beers available on tap.

Their most popular beer is their house beer, Mt. Tam Pale Ale. Mt. Tam, a very well-balanced, medium-bodied pale ale with a delicate hop flavor and aroma, is made with Cascade, Columbus and Amarillo hops. Their British style ESB is lightly hopped and has a smooth finish that lends to its mellow flavor, while the Porter is packed with roasted malts giving it a rich and robust chocolaty taste.

Moylan also owns Noonan's Bar & Grill, just a few doors down from Marin Brewing Company, where he offers 20 beers on tap from both Marin Brewing

and his other brewery, Moylan's up in Novato. But Noonan's is really known for the assortment of hard liquor they serve - over 1,000 spirits - and they boast the largest selection of tequila in the world with over 400 varieties available.

Both of Moylan's restaurants at Larkspur Landing offer good food, unique atmosphere and quality beers. Plus, their location, right across from the ferry terminal, makes them conveniently accessible by ferryboat, so you can leave your car at home.

Joel Williams was a professional craft brewer for over seven years at several breweries. He earned a Diploma in Brewing Sciences in 1996 from the world-renowned Siebel Institute of Technology in Chicago.



The Haight's Only Brewery and San Francisco's Original Gastropub

Hand-Crafted, Artisan Ales

Cask Conditioned Ales

Local, Sustainable Food

www.magnoliapub.com

1398 Haight @ Masonic

(415) 864-7468

**21ST SAN FRANCISCO
AMENDMENT**

Brewery - Restaurant - Bar
563 2nd Street - 2 blocks from AT&T Park

Happy Hour - \$3 Beers \$3 Appetizers - M-F 2:30 - 5:30
*Except during Giants Home Games

Every Wed night enjoy fine cask condition beer and play your iPod in the Brewers Loft!

414-369-0900

www.21st-AMENDMENT.com

Controlling the Wine Storage Environment Naturally

BY DIANNE BOATE & ROBERT MEYER

There are a range of options when considering wine storage solutions, from expensive propositions to “el cheapo” bargain basement finds to free! We all love free.

We'll start by offering the advice of taking advantage of what is closest to home like we did. We have a column of wooden wine cases stacked floor to ceiling in a corner against the kitchen wall. These eight boxes (12"x15"x15") just fit within our standard apartment ceiling height and they do the job. In this relatively small space we can store 96 bottles.

We recently called The Wine Club

in San Francisco to inquire how much the boxes cost and the answer was - free! Midweek they place the boxes outside.

The foggy weather in our San Francisco neighborhood has a lot to do with how we can get away with such simplified storage. Wine is finicky about where it sleeps. Since you have spent good money buying the wine, protecting your investment is a very good idea. Wine wants a cool place, out of sunlight, and a place free of vibration.

Kevin Zraly, author of *Windows On The World Complete Wine Course* and our newest hero of wine educators, advises that if there is any doubt at all about temperature conditions, to put all wine, red and white, in the refrigerator. He says higher humidity is better than

lower; temperature changes are not good for wine and warmer temperatures prematurely age wine.

Watch when you shop for wine. Observe how the bottle looks and how it is stored. Merchants who want to keep a good reputation will take care to store wine properly, but we have seen some bargain places where a shaft of sunlight is shining down from above directly on the wine. In one store down the peninsula, the wine was actually sitting in a window. Horrors!

Be sure to examine the bottle, for it might tell you how it has been stored. A white wine very yellow in color could well be very bad. Red wines with any suggestions of leaks will be indicated by cork damage, never a good thing.

Field trip to the bunkers

Ever on the lookout for interesting things relating to this column, Dianne drove to the Presidio Wine Bunkers. This unique place is the brainchild of Cristo Kassaris. When he heard that the Presidio Trust was looking for tenants - Voila! - He saw the opportunity to establish Presidio Wine Bunkers, a place where anyone can store their wine. The building's thick concrete walls echo the cave storage system used in France. The website [www.presidiowinebunkers.com] states that the “nature-controlled environment is immune to power outages, system breakdowns or attendant negligence. The underground bunkers require no air-conditioning. They provide an ideal wine-aging temperature of 55° to 59° F, humidity from 70 to 79% and minimal light or bottle disturbance, allowing wine to fully mature without the ravages of oxidation.”

Wine storage space, enough for 20 cases of wine, can be rented for as little as \$40 a month. “The cost is for the square footage, not how much you store,” said Manager, Paul Buonocore.

When asked what kind of clients utilize this concept, the answer was, private collectors, wine bars, wine clubs, restaurants, sales people and even wineries. They have an outdoor area with tables and umbrellas and a tasting room that can be reserved for private functions. It seems like a good place for an investment, and we know the place won't burn down.

Dianne Boate is a freelance writer, photographer (Icelandic *Summerscapes* currently on display

at SF's Balboa Theater) and botanical illustrator (*The Soft Side of the Rock* exhibit, Alcatraz Island.) Robert Meyer is in France at the Cannes Film Festival putting on a wine party for 1,000 people. They are working on a book titled “Are You Ready to Go, Dianne?” Since he is there and she is here, obviously she wasn't.



Rosenblum
CELLARS

Zinfandel, Syrah and more.

Rich, ripe, fruit-forward Zins, Syrahs—and more—that get top scores from critics and *Wine Spectator*.

Visit us to taste your way through the best of California.



WINERY & TASTING ROOM

2900 Main Street, Alameda, CA 94501

Complimentary Wine Tasting

Accessible by San Francisco Bay ferry, we're just feet from the Alameda Terminal!

Open Daily 11-6

510-865-7007

www.RosenblumCellars.com

ST. GEORGE SPIRITS



Makers of Hangar One
Vodka, St. George Single
Malt Whiskey, and Aqua
Perfecta Eau de Vie

Tours: Saturdays at 1pm

Tasting Room Hours:
Wed-Sat noon-7pm
Sun noon-6pm

2601 Monarch Street
Alameda, CA 94501
510.864.0635
www.stgeorgespirits.com



Photo by Eric Hebert, USCGAUX

The Coast Guard Cutter Pike assisted in the effort to move two Humpback whales from the Port of Sacramento, approximately 90 miles inland, to open waters in the Pacific Ocean. The Coast Guard along with NOAA's National Marine Fisheries Service and several other federal and local agencies worked together to move the whales back to their normal habitat.

Scientists Successfully Administer Antibiotics to Injured Whales

Whales healthy enough to successfully escape under Richmond-San Rafael Bridge

The two whales, a mother and her calf, which were stuck in the shallow waters of the Sacramento River last month, sustained some significant injuries; however, veterinarians successfully administered antibiotics to help the two whales combat infection. The antibiotics were administered using

custom made syringes deployed via a remote operating apparatus into the muscle tissue of both whales.

"We are very pleased that we were able to administer these meds," said Dr. Teri Rowles, Director of Marine Mammal Health for the National Oceanic and Atmospheric Administration (NOAA). "This is the very first time antibiotics have been administered to whales in the wild, and it took an exceptional collaboration."

Rescuers used the next few days to assess the health condition of the two humpbacks. "The goals of this ... health assessment are to collect samples of the whales' breath and skin and obtain another tissue biopsy from the mother," said Rowles. "Conditions on the water and the cooperation of the whales will determine what collection activities can be attempted and completed." Breath analysis will help determine the general health condition of the whales and whether the calf is nursing.

At press time, the two wayward whales caught in the delta, had traveled through the Carquinez Bridge, south through San Pablo Bay and through the Richmond-San Rafael Bridge.

"They have been traveling fairly quickly, between four-to-five mile per hour," said Rod McInnis, NOAA. "The boats on scene quickly spotted the whales and have been following them out since, to not only monitor the health of the whales as well as enforcing the moving 500-yard safety zone."

The Coast Guard along with the California Department of Fish and Game worked to continually enforce the moving 500-yard safety zone as the whales continued their southern descent towards the Pacific Ocean.

The Marine Mammal Center and NOAA, plan to continue to monitor the whales to assess their health and well being, as well as how the mammals are responding to the antibiotics.

Source: USCG

A FREE UC Berkeley Extension public lecture

Greening Cities in Response to the Climate Crisis

June 23: Sat., 10 am-1 pm
San Francisco: South of Market Center, 95 Third St. (at Mission)
www.unex.berkeley.edu/greencities

Examine practical solutions to minimize urban development's negative impact on the biosphere with award-winning architect David Dobereiner, AA Dipl., M.A., author of *The End of the Street: Sustainable Growth Within Natural Limits*.

To reserve your free space, call 642-4111 and refer to EDP 015404.

UC Berkeley Extension
Uncommon knowledge since 1891

FLOORING alternatives

www.flooringalternatives.com

Bamboo - Cork - Recycled/Reclaimed Woods

FSC © 1996 Forest Stewardship Council A. C. SW-COC-1264
FSC certification ensures responsible use of forest resources.

Sustainable floors since 1998.

758 Gilman St (The Tannery Complex)
Berkeley, CA 94710 877.639.1345

new! veggie based inks

new! green cards!

100% recycled fsc certified uncoated cardstock

+ ONE MORE TREE TO HUG +

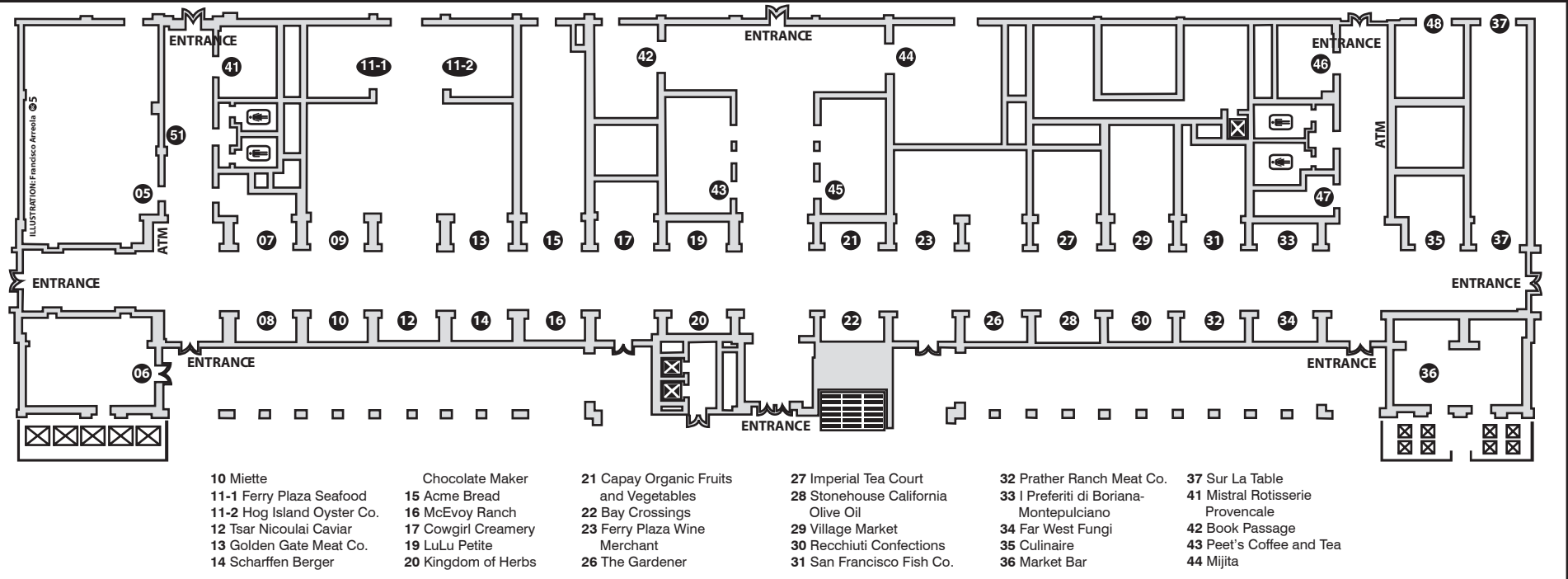
Environmental Facts

Pat Consumes Waste Content	100%
Forest Stewardship Council Certified	100%
Vegetable Based Ink	100%
Indigenous People's Rights Respected	100%
High Conservation Value Forests	100%
Wildlife Conservation	100%
Tree Canopy	100%
Native Plant Species	100%
Forest Area Disrupted	0%
Forest Area Destroyed	0%
Forest Area Degraded	0%
Forest Area Restored	100%
Forest Area Protected	100%
Forest Area Managed	100%
Forest Area Planted	100%

CLUBCARD
www.clubcardprinting.com

green printing made easy
415.865.1930 2275 market street - in the castro!

SAN FRANCISCO FERRY BUILDING MARKETPLACE



Fifteen Minutes of Stop and Shop: Convenient parking option for the Ferry Building customer

One of the best incentives for locals to shop at the Ferry Building is the 15-minute white zone parking in front of the Marketplace. Customers can run in for pre-orders or last minute groceries and not have to park in the lot. To accommodate our visitors, we ask that the tenants and employees refrain from parking in the white zone. **How the 15-minute stop-and-shop zone works:** Drive to the white zone, leave keys with valet, get a parking stub (valid for 15 minutes). If customers stay over 15 minutes, their vehicle will be driven to the parking lot. Valet rates apply. *Please note: On Farmers' Market days, white zone parking is available only after 3:30PM.*

city

CHAYA BRASSERIE LOS ANGELES
8741 ALDEN DRIVE
RESERVATIONS: 310.859.8833

beach

CHAYA VENICE
110 NAVY STREET
RESERVATIONS: 310.396.1179
WWW.THECHAYA.COM

bay

CHAYA BRASSERIE SAN FRANCISCO
132 THE EMBARCADERO
RESERVATIONS: 415.777.8688

The Insider's Guide to Better Boating



Find Towers, Cooperating Marinas and West Marine Stores Nationwide

BoatU.S. Members get more out of boating—more time, more savings and more inside information. After 40 years of Membership, we've got more ways to help boat owners make the most of their time on the water.

- 2007 Member Services Directory
- Discounts on Fuel, Repairs and More at Cooperating Marinas
- Low Cost Towing Services and Marine Insurance
- A Year's Subscription to *BoatU.S. Magazine*

Over 650,000 Members Know—It Pays to Belong. **Join BoatU.S. Today!**



800-395-2628

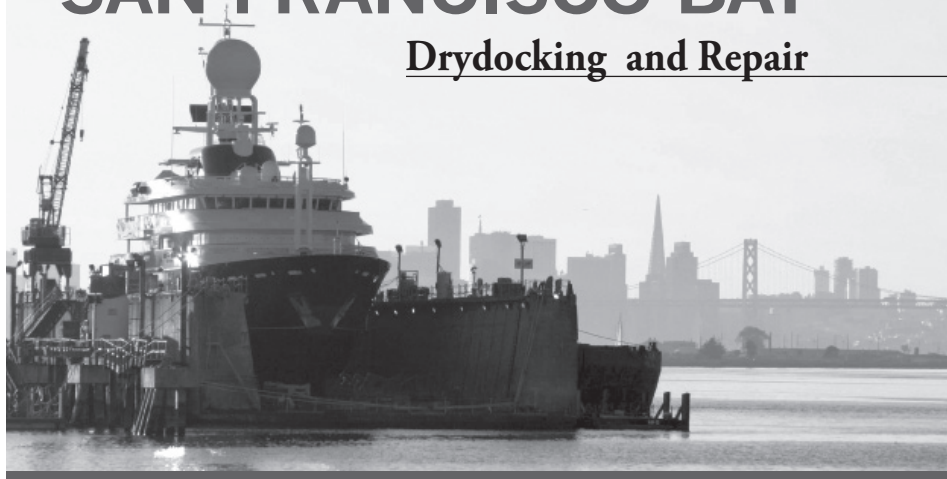
priority code MZE92T

BoatU.S.com



SAN FRANCISCO BAY

Drydocking and Repair



New 1200 Ton Syncrolift® • 2800 Ton Drydock

Contact: Mike Anderson

Phone: 510-337-9122 • E-mail: manderson@bay-ship.com

High Winds Cause Heavy Case Load

USCG, Alameda, May 5 - Due to the harsh winds the Bay Area experienced in May, USCG Station San Francisco underwent an extensive caseload:

- The Coast Guard Cutter Sockeye, an 87-foot patrol boat, deployed its small boat to recover people in distress, who were on a vessel that was taking on water off of Brook Island in the Richmond Marina.
- A Coast Guard 41-foot rescue boat recovered three people from an overturned catamaran near Yerba Buena Island.
- The Coast Guard Auxiliary responded to a windsurfer in distress off of Coyote Point. The windsurfer had sustained a broken mast and sail and experienced trouble getting back to shore. Another windsurfer assisted. Both windsurfers made it back to shore safely.
- A Coast Guard 41-foot rescue boat was deployed to assist a 26-foot cabin cruiser with eight people on board, which ran aground in the Oakland estuary. When the rescue boat arrived, the vessel in distress was being assisted by another vessel and being towed to Grand Harbor Marina.
- A 41-foot rescue boat assisted an overturned sailing vessel and recovered three people resting on top of the overturned boat off of Alameda Point near the former Naval air station. The sailing vessel's crew was taken to Station San Francisco and treated for mild hypothermia.

Man Dies From Injuries at Baker Beach

USCG, San Francisco, May 15 —Coast Guard Sector San Francisco received a request from Presidio Park police for assistance. A man, estimated between 35 and 40 years old was stranded with a head injury on a cliff at Baker Beach. Presidio Fire Department was able to reach the man on foot, but he was pronounced dead on scene. The USCG helicopter lifted and transferred the man, who was an SF City resident, to nearby emergency services.

AVAST! Pirates Invade Vallejo

The first annual Northern California Pirate Festival will take place Saturday, June 16 and Sunday, June 17 along the Vallejo Waterfront at Marina Green just north of the Vallejo Ferry Terminal. For one weekend, the world of pirates will come alive at this first event of its kind in the Bay Area featuring tall ships, live music, historic pirate characters, nautical inspired crafts, gourmet food, micro brewed beers, fine wines, children's entertainment, games, costume contests, treasure hunts, sword fighting and ship to shore cannon battles.

Opening at 10:00 am on Saturday, the festival will close at dusk shortly after



The 72 foot Aldebaran Schooner will participate in the ship-to-shore cannon battle at the Northern California Pirate Festival in Vallejo.

a fireworks display over the water. On Sunday (Father's Day) the festival will be open from 10:00 am to 6:00 pm. For more information visit www.norcalpiratefestival.com.

Fair Weather Experience

“Oh, Starbuck! it is a mild, mild wind, and a mild looking sky.” — *Moby Dick, Chapter cxxxii, The Symphony*

BY SCOTT ALUMBAUGH

Yep. Even Captain Ahab, crazy as he was, could wake out of his monomaniacal trance and appreciate a good sailing day. And June in the San Francisco Bay offers an abundance of fair weather sailing. It lies in the cusp between the less consistent weather in May and the white-knuckle winds of July.

June is the perfect time to go sailing. Aside from being a pretty mild month, June also has the longest days of the year. Or, as a sailor would say, the longest sailing days of the year.

It is also a perfect time of year to take up sailing. But for those who don't sail, it can be a little intimidating to figure out how to get started. Taking lessons is a natural step, but how do you choose a school? How much does it cost? How long will it take? These are natural questions, and are easily solved with some research. But then there is the possibility of a larger problem.

What if you don't like it?

Everyone likes the idea of sailing. I mean, what's not to like? Put this paper down for a second and look out across the Bay. Chances are it's gorgeous out there. Search around for a sail boat. Watch it glide by for a minute as it moves effortlessly, gracefully over the water. Feel the wheel in your hand and the wind in your face. Smell the salt air. Where else could anyone want to be?

Well, like most things in life, the world looks different from the other point of view. The skipper of that boat is checking the wind, the trim of the sails, feeling the wheel to see if the boat has too much weather helm or not enough,

scanning the crew for signs of seasickness, rubbing her leg because she bruised it during the last tack, looking around to see if the ferry's going to run her over, deciding when to change course, how long it will take to get to her destination, planning how to dock so as not to put another scratch in the hull . . .

You get the idea. Or the reality, I should say.

But in between the bruised knee and the effortless glide of the boat lies the real joy of being on the water — the companionship and momentary isolation from the pace, noise and clutter of modern life, the pure pleasure of being with friends away from the mundane distractions and the time to have the longer conversation. Here in the Bay Area we have that unique opportunity of getting away from it all right in the middle of it.

So, how do you find out if sailing's for you? You might have a friend who sails and can take you out. If not, there are sailing schools to try [see waterfront activities p.19], and this month, local sailing enthusiast John Arndt has organized Summer Sailstice, an international celebration of sailing and a chance for

everyone who wants to get out on the water for free during the longest days of the year. For people who sail, it is about connecting with other boaters around the world. For those of you who might become sailors, it's an opportunity to get an idea of what all the excitement is about.

Can you really know if you will like sailing just based on one experience? Absolutely. Almost everyone remembers the first time they sailed and what kind of seed that experience planted. Put the paper down and look around the Bay again, and ask yourself: How can anyone live in this area and not spend all the time they can on the water?

Scott Alumbaugh is a US SAILING certified, Coastal Passagemaking instructor. He holds a 100 Ton Masters license, has worked as a delivery and charter skipper in the United States, Mexico and in the Caribbean, and is a sailing instructor at OCSC Sailing in Berkeley Marina.



On the weekend of June 23, Treasure Island Sailing Center offers everything from free sailboat rides to a children's treasure hunt and a Saturday night dinner and dance. And anyone sailing that day can sign up and pledge a dollar for every mile you sail on the solstice, and the money will go to the Ocean Conservancy to help preserve the ocean. All in all, what could be a better way to test the sailing waters, so to speak?

The center of Summer Sailstice activity in San Francisco Bay is Clipper Cove a nonprofit Sailing Center between Yerba Buena and Treasure Islands. The center's mission is to improve the Bay Area community and the sport of sailing by providing access, facilities, and sailing instruction to people of all socioeconomic backgrounds, skill levels and physical abilities. They teach life skills through sail training to underprivileged kids, most of them going through the program on scholarship, and provide lessons, training, coaching and racing for introductory and advanced disabled sailors.

Resources:
 Summer Sailstice:
<http://www.summersailstice.com/>
 Treasure Island Sailing Club:
<http://www.tisailing.org/>

ALAMEDA | OAKLAND FERRY



Whether you're commuting to work or enjoying a weekend outing with friends or family, the Alameda/Oakland Ferry is a great way to travel the bay.

service between Oakland's Jack London Square, Alameda Main Street, SF Ferry Building and SF Pier 41. Seasonal service to SBC Park for Giants games and Angel Island Sate Park



510.749.5837

| www.eastbayferry.com

Biking Trails

China Camp State Park

BY DAN SANKEY

Whether you're skilled and able or clumsy and chubby you can ride a bike, you, yes you. And, believe it or not, off-road mountain biking is safer and softer than riding on pavement. No cars or traffic lights, just you tooling around on some dirt underneath the trees.

With blue skies and warmer air upon us, it's time to get out of your urban landscape and into some good old-fashioned nature. Fortunately the Bay Area provides some wonderful options, for scenic rides that take you in and out of trees, on shaded trails to wide open vistas with views of the water. One such place is China Camp State Park in San Rafael.

China Camp boasts beautiful views of San Pablo Bay, plentiful wildlife and a historical fishing village from which the park gains its name. There are 15 miles of trails in the 1512-acre park and most are bike legal. To get there takes an easy 30 minute drive north from San Francisco or over the Richmond Bridge from the East Bay.

The riding trails here are well-balanced for a range of skill levels - from beginner to expert, including great trails where riders at different skill levels will enjoy riding together. China Camp provides some the best trail conditions that can keep everyone happy. The trails have no roots or rocks larger than six inches high, yet, it does have fast sweeping corners and rolling bumps that keep it fun for riders who want a challenge. The hills are gradual and require just a consistent spin of the pedals to conquer them.

As for scenery, riders can climb to a highpoint of 900 feet and stand on the concrete circular covers of the retired Nike missile silos for expansive views of Mt. Tamalpais to the west and Mt. Diablo to the east.

My favorite loop starts at a short wooden bridge in the dirt parking lot of Miwok Meadows day-use area. This is the trailhead of Shoreline Trail. Follow

it northwest for a flat to rolling twisty trail that is ideal for first time riders. Stay on Shoreline past the campground until it intersects with Bay View Trail, which climbs up and across the hills ridge. You will pass Echo Trail that connects to Bay Hills Drive, a paved road that leads up to the missile silos for stellar views.

Once Bay View crests at about 700 feet it descends at a subtle grade, letting you maintain an easy downhill speed for over a mile. Experienced riders can use the steep hillside banks to flow through the many corners. However, do be very cautious and respectful of hikers in the park. Riding with a bell or whistle is a great way to make sure these trails remain biking friendly.

Continue on Bay View, keeping left at any intersections onto McNear fire road until you reach Oak Ridge Trail on the right which will reconnect with Shoreline back to Miwok. Don't forget to stop at the many good viewpoints and look for hawks, turkeys and deer that are very plentiful in the park. Remembering to take in your surroundings makes the pedal pushing more doable and enjoyable.

Tips for beginning mountain trail riders

The key for new riders is to take it easy, enjoying the environment and views. Don't push yourself so hard that you're suffering.

It's also a good idea to try riding your bike around your neighborhood a day or so before you ride off-road to familiarize yourself with it, even if only for a half hour or so. Try going up and down curbs and stairs, learning to shift your weight to keep your momentum as you roll over the obstacle. A little practice beforehand will make your time mountain biking so much more enjoyable.

Bay Area Nike sites
<http://www.acme.com/jef/nike/>



Photo by Dan Sankey

Justin Pyatt rides down a slope adjacent to the Nike missile silo at the peak of China Camp.

Take the tour at www.WaterfrontProject.org



Vallejo Waterfront Preservation and Downtown Revitalization Project

Beautifying and Enriching the Heart of Vallejo



Log on to www.WaterfrontProject.org for Vallejo Community Events, Project

Updates, and Ferry Schedules



New Northern Waterfront Site Plan With More Park and Open Space

WATERFRONT ACTIVITIES

- Every Sat/Sun 9AM - 3PM — North Bay/Migrating Gray Whales Kayak Tour, Blue Waters Kayaking, Tomales Bay, 415-669-2600, www.bwkayak.com**
Often the shorter tours are not enough when there is so much to see on Tomales Bay! We will launch at Nick's Cove and paddle through the tide channels amid the majestic scenery and remote beaches of the northern part of the Bay. As we paddle along we will discover the diversity of wildlife which may include: Tule Elk, harbor seals, bat-rays, hawks, leopard sharks, sea stars and recently some migrating Gray Whales. 4 hour and private tours are also available \$98/person.
- Every Sat/Sun 10AM - 4:30PM — Basic Keelboat 1, Spinnaker Sailing, San Francisco, 415-543-7333, www.spinnaker-sailing.com**
Come and experience the thrill of sailing on the San Francisco Bay with this introductory 12 hour, 2-day course that will familiarize you with all of the fundamental aspects of sailing on the bay. Call for Pricing.
- Every Wed. 6PM - 8PM — Wednesday Night Sail, OCSC Sailing, Berkeley, 510-843-4200, www.ocscsailing.com**
Set sail aboard one of our larger yachts skippered by a professional OCSC skipper and enjoy a relaxing sunset out on the Bay. You can soak in the beauty of the evening while not lifting a finger; or pitch in and take the helm. Following the sail we will serve chili, chips, salsa, and beverages. A great time to get to know other like-minded sailors. \$30 for members, \$40 retail. Call to make your reservation.
- June 2 10AM - 3PM — Rosie The Riveter National Historic Park Kayaking Tour, 415-461-2222, www.outbackadventures.com**
Paddle through history on an exclusive kayak tour of Rosie the Riveter/World War II Home Front National Historical Park. Located in Richmond California, these historic Shipyards constitute the largest WWII shipyard operation in the U.S. \$85 per person.
- June 3 8AM - 10:30AM — Surfing Lessons, UCSF Outdoor Programs, Pacifica, 415-476-2078, www.outdoors.ucsf.edu**
Always wanted to surf but never knew where to start? Then try your hand in this great beginner surfing class. Lessons are held at Linda Mar Beach, a mile long stretch in Pacifica that offers a perfect setting for beginners. Price includes surfboard, wetsuit, and instruction. Cost \$89. Call for more information.
- June 3 9AM - 3PM — Elkhorn Slough Wildlife Journey, California Canoe & Kayak, 800-366-9804, www.calkayak.com**
The marsh habitat of Elkhorn Slough in Monterey Bay is one of the best places in North America to combine a day of quiet water paddling and wildlife viewing. An amazing variety and abundance of animals call it home: sea otters, harbor seals, herons, egrets, hundreds of pelicans and thousands of sandpipers. Our trip leader for this wonderful tour is naturalist and kayak guide par excellence, Greg Meyer. \$109, including guides and equipment.
- June 3 10AM - 12PM — Ocean Beach Cleanup, Surfrider Association (SF Chapter), Ocean Beach at Sloat, www.sfsurfrider.org**
Help keep our local beaches clean! Just show up at Ocean Beach at the end of Sloat Ave and we'll provide gloves, bags and instructions. Rain cancels this event.
- June 9 10AM - 3PM — Red Rock Kayak Tour San Francisco Bay, 415-461-2222, www.outbackadventures.com**
Join Outback Adventures for a bay paddle to historic Red Rock Island. Surrounded by some of the deepest water in the North Bay, 60 feet, this Island has the distinction of being the only privately owned island in the San Francisco Bay. \$85 per person.
- June 9 11AM - 5PM — Club Nautique Open House/Grand Opening Celebration Marina Bay, Richmond, 510-232-5490, www.clubnautique.net**
Join us to help celebrate the opening of our newest location in Marina Bay, Richmond. We'll be offering Sailboat rides with a \$20 suggested donation to the Leukemia Lymphoma Society. The coolers will be stocked and the BBQ fired up. We'll have live music on our large enclosed patio and our impressive fleet of boats will be open for viewing. Everyone is welcome! Sailboat rides start at 11:30 and are on a first come first served basis.
- June 10 9AM - 4PM — Kayak Forward Stroke Clinic, Half Moon Bay, California Canoe & Kayak, 800-366-9804, www.calkayak.com**
Brent Reitz, world class racer and 6 time National Wildwater Champion, will discuss the finer details of the kayak forward stroke, as well as body posture, boat dynamics, and more. We will video and critique your stroke during the class! Most of the day will be spent on the water practicing. Remember, it's not pure strength, but good technique that's important! \$159, including equipment, instruction and videography.
- June 17 7AM - 12PM — Monterey Diving, Advanced Diving Technologies, 925-432-2111, www.adtscuba.com**
Now is the time to be diving! The "Viz" is great, the sun is out and the weather is warm. Join us for diving the beautiful kelp forest and the colorful sea life. Keep a lookout for the whales, dolphins and otters. It is all waiting for you. Dive the DV Escapade for 2-tank dives, refreshments and more. Nitrox available. Call today!
- June 17 10AM - 3PM — Marin Islands Kayak Tour, Outback Adventures, Larkspur, 415-461-2222, www.outbackadventures.com**
Join Outback Adventures friendly and experienced guides for this exciting trip out to East and West Marin Islands. Located about an hour's paddle from our Larkspur headquarters, this federally protected marine sanctuary is home to a plethora of resident and migratory bird species. \$85 per person.
- June 20 7PM — Kawika Chetron: Cold Water Photography, Marin Scuba Club, San Rafael, 415-453-9556, www.marinclub.org**
We invite divers of all skill levels to join us the 3rd Wednesday of each month 7:00 p.m. at The Seafood Peddler Restaurant (upstairs) in San Rafael for a featured presentation. We offer guest speakers discussing all aspects of diving using multi-media video presentations. Stay active in your scuba/freediving community! For information, contact Alberta: 415-453-9556, marinclubmembership@yahoo.com.
- June 23 1PM - 4PM — Summer Sailstice Schooner ride, OCSC Sailing, Berkeley, 510-843-4200, www.ocscsailing.com**
Celebrate the Global Holiday just for sailing on the longest weekend day of the year! We'll be sailing aboard a schooner and then returning for a BBQ party afterwards. Tickets for the boat ride are just \$55. Please call and make your reservation soon - space is limited.
- June 23-24 Activities All Weekend — Summer Sailstice, Treasure Island Sailing Center, San Francisco, 415-421-2225, www.tisailing.org**
International sailing celebration at Treasure Island Sailing Center sponsored by West Marine. Welcome summer back with free sailboat rides, a children's treasure hunt, sailboat cruising and scavenger hunt, youth and adult regattas, a silent auction, live music, dinner dancing and fun for all. Main Event (\$20) Saturday 4-7PM.
- June 24 8:45AM - 3:30 PM — Skills Class I: Sea Kayaking Basics, Blue Waters Kayaking, Tomales Bay, 415-669-2600, www.bwkayak.com**
We begin with an orientation to kayaks, gear and the basics of paddling strokes. We then teach paddling strokes, bracing techniques, and ultimately learning wet-exits, and re-entry (recovery) techniques. Our day concludes with an introduction to reading: tide logs, charts and weather. Successful completion of this class enables a kayaker to rent closed deck kayaks from most outfitters. \$99 per person.
- June 30 7:30PM - 10:30PM — Moonlight Kayaking, Oakland Estuary, California Canoe & Kayak, 800-366-9804, www.calkayak.com**
Moonlight paddling is enchanting! The water is calm and glassy on the Oakland Estuary and the city lights add to the ambiance. We enjoy a leisurely pace as the sun sets and the moon rises, illuminating a delightful evening. \$49, includes equipment, guides, and moonlight!

WATERFRONT ADVENTURES

Organizations, Associations & Clubs

Bay Access - San Rafael, 415-457-6094, www.bayaccess.org

- Non-profit organization to create a water trail in San Francisco Bay for human-powered boats and beachable sail craft.

Bay Area Sea Kayakers (BASK) - 415-457-6094, www.bask.org

- Cooperative recreational club dedicated to the safe enjoyment of the sport of sea kayaking. Meetings generally on the last Wednesday of the month and are open to the public.

California Marine Wilderness Guides - 510-684-7835, web.mac.com/marinewilderness.

- Scuba diving organization focusing on dive training and increasing knowledge and awareness of our marine ecosystem.

Cal Adventures / UC Aquatic Center - Berkeley, 510-642-4000, www.oski.org

- Windsurfing, sailing & kayaking lessons for UC students and locals.

Cal Sailing Club - Berkeley, www.cal-sailing.org

- Sailing cooperative, membership is open to the public.

Cal Divers - 510-417-0025, www.caldivers.org

- Recreational, networking & social club for certified divers of all levels.

Cold Water Surf Club - Sebastopol, 707-824-4360, www.coldwatersurfclub.com

- Non-profit organization that is working to help build our community.

Dolphin Club - San Francisco, 415-441-9392, www.dolphinclub.org

- Non-profit, public access athletic organization with a diverse membership of about 900 women and men.

Kelptomaniacs - San Carlos, 650-591-5641, www.wallins.com

- Scuba diving and adventure club.

Marin Scuba Club - San Rafael, 415-453-9556, www.marinclub.org

- Organization for divers of all skill levels. Meetings on the 3rd Wednesday of each month, 7:30 PM at The Seafood Peddler Restaurant in San Rafael for a featured presentation. Stay active in your scuba/freediving community!

NorCal Divers - San Bruno, 650-588-4998, www.cadive.com

- Active dive and adventure club.

Rio Vista Windsurfing Association - Rio Vista, www.rvwa.com

- Non-profit Windsurfing and Kiteboarding Association.

Rock 'n' Reef Divers - Fairfield, 707-425-1932, www.itsallaboutscuba.com

- Scuba diving club that meets the 3rd Wednesday of each month at 7PM at All About Scuba in Fairfield.

San Francisco Boardsailing Association (SFBA) - San Francisco, www.sfba.org - Non-profit organization to promote safety, provide education, ensure access and improve facilities.

Surfrider Foundation (Marin Chapter) - Larkspur, www.surfrider.org/marin

Surfrider Foundation (SF Chapter) - San Francisco, www.sfsurfrider.org

Surfrider Foundation (Sonoma Chapter) - Penngrove, www.surfrider.org/sonomacoast

- Non-profit, environmental organization dedicated to the protection and enhancement of our local waves, water and beaches through conservation, activism, research and education.

Treasure Island Sailing Center - San Francisco, 415-421-2225, www.tisailing.org

- Non-profit organization dedicated to the community and to the sport of sailing by providing access, facilities, and sailing instruction to people of all socioeconomic backgrounds, skill levels and physical abilities. Learn to sail, regatta racing, youth and adult classes. This is where sailing starts!

Western Sea Kayakers - www.westernseakayakers.org

- Club dedicated to the safe enjoyment of the sport of sea kayaking.

Water Sport Shops, Facilities, Training & Resources

Advanced Diving Technologies

625 California Ave. Suite F

Pittsburg CA 94565

925-432-2111

www.adtscluba.com

Full service scuba center with sales, service, rentals and dive instruction plus dive travel.

All About Scuba

925 Texas St.

Fairfield CA 94533

707-425-1932

www.itsallaboutscuba.com

Anderson's Swim & Scuba

541 Oceana Blvd.

Pacifica CA 94044

650-355-3050

www.andersonscuba.com

Full scuba certification courses, snorkeling & swimming lessons in an indoor heated pool plus sales, service, rental equipment and air fills.

Aqua Surf Shop

2830 Sloat Blvd.

San Francisco CA 94116

415-242-9283

www.aquasurfshop.com

Surfboards, skateboards, art & clothing.

Aqua Surf Shop

1742 Haight St.

San Francisco CA 94117

415-876-2782

www.aquasurfshop.com

Surfboards, skateboards, art & clothing.

Bamboo Reef Enterprises, Inc.

584 4th St.

San Francisco CA 94107

415-362-6694

www.bambooreef.com

Scuba training, sales and service plus dive trips.

Blue Waters Kayaking

19238 Sir Francis Drake Blvd.

Inverness CA 94937

415-669-2600

www.bwkayak.com

Wilderness kayaking on Tomales Bay including naturalist-led tours, classes, rentals, overnight camping and youth camps.

Bodega Bay Kayak

1580 East Shore Dr. @ Blue Whale Shopping Center

Bodega Bay CA 94923

707-875-8899

www.bodegabaykayak.com

Kayak sales, rentals, tours & classes.

Bodega Bay Surf Shack

1400 Hwy 1

Bodega Bay CA 94923

707-875-3944

www.bodegabaysurf.com

Full service surf shop in Bodega Bay with sales, rentals and lessons.

Cal School of Diving

1750 6th St.

Berkeley CA 94710

510-524-3248

www.caldive.net

Scuba instruction and dive trips.

California Canoe & Kayak

409 Water St., Jack London Square

Oakland CA 94607

510-893-7833

www.calkayak.com

Year round canoe and kayak sales, rentals, class & trips.

California Dive Center

715 El Camino Real

San Bruno CA 94066

650-588-4998

www.cadive.com

Full service PADI five star dive center.

California Surf Shop

899 Gravenstein Hwy

Sabastopol CA 95472

707-824-4360

www.californiasurfshop.com

Home of the Cold Water Surf Club. Family owned and operated full service surf, skate and swim shop supporting the community and the environment.

California Windsurfing

650 Shell Blvd.

Foster City CA 94070

650-594-0335

www.californiawindsurfing.com

Windsurfing lessons - kayak and sailboard rentals.

Captain Aqua's Scuba Diving Center

250 E. Jackson St.

Hayward CA 94544

510-728-0225

www.captainaquas.com

Full service dive center - training, travel, equipment & repair.

Cass' Marina

1702 Bridgeway

Sausalito, CA 94965

415-332-6789

www.cassmarina.com

US Sailing Certified Sailing School with classes starting weekly. We offer bareboat rentals, skippered charters in the Bay and adventures around the world.

City Kayak

Pier 38, The Embarcadero

San Francisco CA 94107

415-357-1010

BLUE WATERS
KAYAKING

Blue Waters Kayaking
12938 Sir Francis
Drake Blvd,
Inverness, CA 94937
www.BWKayak.com
Phone (415) 669-2600

Just an hour north of San Francisco in the Point Reyes National Seashore, wilderness kayaking and hiking experiences await you. Two locations on Tomales Bay offer naturalist-led tours, camping, youth camps, custom trips and all levels of classes. We also do Baja, Yucatan tours in the winter/spring.



California Canoe & Kayak
409 Water St, Jack London Square
Oakland, CA 94607
www.calkayak.com
Phone (510) 893-7833

PUREpaddlesports. This is what California Canoe & Kayak is all about - for 34 years! Our staff has hundreds of years of combined paddling experience in canoes, sea and whitewater kayaks. We teach, guide, rent, sell and fix. Check us out. Our waterfront location is ideal for classes, rentals, demos and trips.

WATERFRONT ADVENTURES

Water Sport Shops, Facilities, Training & Resources

www.citykayak.com
Kayak rentals and trips.

Clavey River Equipment
409 Petaluma Blvd. South
Petaluma CA 94952
800-832-4226
www.clavey.com
Kayak and whitewater raft rentals and sales.

Club Nautique
www.clubnautique.net
Award winning sailing school with three great locations. The largest, newest, best equipped fleet of sail and powerboats for lessons and charters on the San Francisco Bay from beginner to offshore.

Alameda:
1150 Ballena Blvd. Ste. 161
Alameda, CA 94501
800-343-7245

Sausalito:
100 Gate 6 Rd.
Sausalito, CA 94965
800-559-2582

Richmond:
2580 Spinnaker Way
Richmond, CA 94804
866-606-7245

Delta Windsurf Company
3729 Sherman Island Rd
Rio Vista CA 94571
916-777-2299
www.deltawindsurf.com
Windsurfing and kiteboarding sales, lessons and rentals.

Demo Sport
1101 Francisco Blvd.
San Rafael CA 94901
415-454-3500
www.demosport.com
Wakeboarding, wakesurfing, water skiing and kiteboard equipment sales, rentals & lessons.

Diver Dan's
2245 El Camino Real
Santa Clara CA 95050
408-984-5819
www.diverdans.com
Full service dive center - training, equipment sales & service, dive travel, on site pool available.

Dublin Dive Center
6715 Dublin Blvd.
Dublin CA 94568
925-829-3843
www.captainaqu.com

Full service dive center - training, travel, equipment & repair.

Harbor Dive & Kayak Center
200 Harbor Dr.
Sausalito CA 94965
415-331-0904
www.harbordive.com
Full service dive center and hobie kayak sales.

Helm of Sun Valley
333 N. Amphlett Blvd.
San Mateo CA 94401
650-344-2711
www.helmsports.com
Kitesurfing lessons, wakeboard, windsurfing, kitesurfing and water skiing equipment sales.

High Tide Surf Shop
9 Fourth St.
Petaluma CA 94952
707-763-3860
www.waveslave.com
Family owned full service surf shop on the crossroads to the North Coast Beaches. Longboard, short board and paddleboards plus wetsuits and surf accessories. Open 12-7 Mon-Fri. 10-5 Sat & 12-4 Sun.

Institute of Diving Technology
8646 Davona Dr.
Dublin CA 94568
925-551-8478
www.divewithitd.com
Certified diving school for all levels plus local trips & travel.

Kite Wind Surf
430 Westline Dr.
Alameda CA 94501
510-522-9463
www.kitewindsurf.com
Kiteboarding, windsurfing and surfing equipment, lessons and rentals.

Mako Marine Outfitters
536 Soscol Ave., Suite 2
Napa CA 94559
707-251-5600
www.makodiveandkayak.net
Full service dive center, kayak sales & rental.

Napa Dive & Sport
162 S. Coombs St.
Napa CA 94559
707-257-2822
www.napadive.com
Friendly full-service dive center with training, equipment sales & service and tropical dive travel.

Napa River Adventures
P.O. Box 10881
Napa CA 94581
707-224-9080
www.napariveradventures.com
Regularly scheduled cruises on luxury electric riverboats plus canoe and kayak rentals.

Nautilus Aquatics
1220 Diamond Way, Suite 110
Concord CA 94520
925-827-2822
www.bayareadiving.com
Full service dive center including sales, rental, repair, training, recreation & travel.

OCSC Sailing
One Spinnaker Way
Berkeley, CA 94710
800-223-2984
www.ocsc.com
The largest sailing school and club in North America. OCSC reinvented sailing 30 years ago making the best of the sport approachable, accessible and affordable for anyone with the desire.

Open Water Rowing Center
85 Liberty Ship Way
Sausalito CA 94965
415-332-1091
www.owrc.com
Open water sculling instruction, club memberships and boat sales.

Outback Adventures
12 E. Sir Francis Drake Blvd.
Larkspur CA 94939
415-461-2222
www.outbackadventures.com
Kayak sales, rentals, trips & classes.

Outback Adventures
1158 Saratoga Ave.
San Jose CA 95129
408-551-0588
www.outbackadventures.com
Kayak sales, rentals, trips & classes.

Pacific River Supply
3675 San Pablo Dam Rd.
El Sobrante CA 94803
510-223-3675
www.pacificriversupply.com
Inflatable whitewater raft & kayak sales, rental and repairs.

Pinnacles Dive Center
875 Grant Ave.
Novato CA 94945
415-897-9962
www.pinnaclesdive.com
Fully accredited scuba training with onsite-heated pool. Diving equipment

sales, rental, repair and local/tropical trips.

Proof Lab
254 Shoreline Hwy.
Mill Valley CA 94941
415-380-8900
www.prooflab.com
Surfing & skateboarding equipment & rentals and local art.

River's Edge
13840 Healdsburg
Healdsburg CA 95448
707-433-7247
Canoe & kayak trips & rentals on the scenic Russian River. Retail sales and concessions.
www.riversedgekayakandcanoe.com.

Scuba San Francisco
650-873-7321
www.scubasanfrancisco.com
Scuba instruction and information on 41 dive sites within a 2 hour drive from SF.

Sea Trek Ocean Kayaking Center
Schoonmaker Point Marina
Sausalito CA 94965
415-332-8494
www.seatrekkayak.com
Sea kayaking classes, trips & rentals.

SF Surf Shop
3809 Noriega
San Francisco CA 94122
415-661-7873
www.sfsurf.com
Custom made surfboards by John Schultze plus surfboard/wetsuit rentals and board repairs.

Spinnaker Sailing
Pier 40, South Beach Harbor
San Francisco, CA 94107
415-543-7333
www.spinnaker-sailing.com
ASA certified sailing school located at the best location on the bay.

Stan's Skin & Scuba Diving
554 S. Bascom Ave.
San Jose, CA 95128
408-998-0767
www.stansdiving.com
Full service scuba center since 1957. Training, equipment sales service & rentals, on site heated pool and dive trips.

Stinson Beach Surf & Kayak
3605 State Rt. 1 North
Stinson Beach CA 94970
415-868-2739
www.stinsonbeachsurfandkayak.com
Sales and rentals of surfboards, boogie boards and kayaks plus wetsuit rentals.

Located 100 yards north of park entrance.

Sunset Bay Kayaks
Suisun City Marina
1011-A Park Ln
Suisun City, CA 94585
707-429-5925 Cell 707-365-2436
www.sunsetbaykayaks.com
Hourly kayak rentals and tours on the largest estuary in the contiguous U.S. Group rates available.

Tradewinds Sailing School & Club
1230 Brickyard Cove Road Ste 100
Pt Richmond, CA 94801
510-232-7999
www.tradewindssailing.com
Tradewinds has more than 40 years of experience making sailing easy and enjoyable to learn - Offering a professional training program and affordable rental and charter programs to members.

UCSF- Outdoor Programs
500 Parnassus Ave 0234
San Francisco, CA 94143
415-476-2078
www.outdoors.ucsf.edu
Year round outdoor programming in the Bay Area and Northern Sierras.

Wallin's Dive Center
1119 Industrial Rd., Suite 7
San Carlos CA 94070
650-591-5641
www.wallins.com
Scuba, snorkel & swim center including instruction, sales, rentals, repairs and dive travel.

Wet Dawg Water Sports Incorporated
4290 Knoxville Rd.
Napa CA 94558
707-966-5701
www.wetdawgwatersports.com
Located on Lake Berryessa. Kayak, canoe, paddleboat and ski boat rentals. Retail sales of wakeboard, water skis and clothing.

Wise Surfboards
800 Great Hwy
San Francisco CA 94121
415-750-9473
www.wisesurfboards.com
Surfboards, wetsuits and accessories. Northern California's largest surf shop.

For advertising inquiries or to submit a listing to Waterfront Adventures, contact Joel Williams at (707) 556-3323 or joel@baycrossings.com

OCSC™ SAILING
Inspire Confidence™



OCSC Sailing
One Spinnaker Way
Berkeley, CA 94710
www.ocsc.com
Phone: (800) 223-2984

We are the top-rated sailing school North America. Sailing is about discovery, freedom and exploration. Our new award-winning website has everything you want to know about learning to sail, free sailing events, real-time weather, live webcams on the bay and free subscription to our "Now Hear This" newsletter and much, much more!



Cass' Marina
Sailing School & Charters

Cass' Marina
1702 Bridgeway
Sausalito, CA 94965
www.cassmarina.com
Phone 415-332-6789

Sailing Season is here!
Sailboat Rentals at affordable prices.
Charters – up to 6 people with a US Coast Guard licensed skipper.
A great way to explore the Bay like you've never done before.
Take advantage of our Learn to Sail Packages and learn to sail, the US Sailing Certified way!

GET THERE BY FERRY

Sponsored by

WATER TRANSIT AUTHORITY

WTA

Golden Gate Ferry																												
LARKSPUR *																												
Weekdays (excluding Holidays)				Weekends and Holidays																								
Leave Larkspur	Arrive SF	Leave SF	Arrive Larkspur	Leave Larkspur	Arrive SF	Leave SF	Arrive Larkspur																					
5:50am	6:20am	6:25am	6:55am	9:40am	10:30am	-----	-----																					
6:35	7:05	7:10	7:40	11:00	12:00	12:30pm	1:20pm																					
7:10	7:40	7:45	8:15	1:30pm	2:20pm	2:30	3:20																					
7:50	8:20	8:30	9:05	3:30	4:20	4:30	5:20																					
8:20	8:50	9:10	9:45	5:30	6:20	7:00	7:50																					
9:15	9:50	10:10	10:45	One-Way Ferry Fares <table border="1"> <thead> <tr> <th colspan="2">LARKSPUR</th> <th>SAUSALITO</th> </tr> <tr> <th colspan="2">Daily</th> <th>Daily</th> </tr> </thead> <tbody> <tr> <td>Adult Cash Fare</td> <td>\$6.75</td> <td>\$6.75</td> </tr> <tr> <td>Frequent Rider Ticket (Book of 20 Tickets)</td> <td>\$4.25</td> <td>\$3.60</td> </tr> <tr> <td>Seniors (age 65+) with Medicare or approved I.D.</td> <td>\$3.35</td> <td>\$3.35</td> </tr> <tr> <td>Youth (ages 6-18)</td> <td>\$3.35</td> <td>\$3.35</td> </tr> <tr> <td>Children (age 5 & under)</td> <td>FREE</td> <td>FREE</td> </tr> </tbody> </table>				LARKSPUR		SAUSALITO	Daily		Daily	Adult Cash Fare	\$6.75	\$6.75	Frequent Rider Ticket (Book of 20 Tickets)	\$4.25	\$3.60	Seniors (age 65+) with Medicare or approved I.D.	\$3.35	\$3.35	Youth (ages 6-18)	\$3.35	\$3.35	Children (age 5 & under)	FREE	FREE
LARKSPUR		SAUSALITO																										
Daily		Daily																										
Adult Cash Fare	\$6.75	\$6.75																										
Frequent Rider Ticket (Book of 20 Tickets)	\$4.25	\$3.60																										
Seniors (age 65+) with Medicare or approved I.D.	\$3.35	\$3.35																										
Youth (ages 6-18)	\$3.35	\$3.35																										
Children (age 5 & under)	FREE	FREE																										
10:10	10:45	10:55	11:30																									
11:10	11:45	11:55	12:30pm																									
11:40	12:15pm	12:25pm	1:00																									
12:40pm	1:15	1:25	2:00																									
2:15	2:50	3:00	3:30																									
2:50	3:25	3:35	4:05																									
3:40	4:15	4:25	4:55																									
4:15	4:45	4:55	5:25																									
-----	-----	*5:20	6:05																									
5:10	5:45	5:55	6:25																									
5:35	6:10	6:20	6:50																									
6:35	7:10	7:20	7:50																									
7:20	7:55	8:10	8:40																									
8:10	8:45	8:50	9:20																									
8:50	9:25	9:35	10:05																									

*All weekdays trips except on (4:30pm SF departure) are operated by high-speed catamarans. Weekend service is provided by high capacity Spaulding vessels.

SAUSALITO							
Weekdays (excluding Holidays)				Weekends and Holidays			
Leave Sausalito	Arrive SF	Leave SF	Arrive Sausalito	Leave Sausalito	Arrive SF	Leave SF	Arrive Sausalito
7:10am	7:35am	7:40am	8:10am	-----	-----	10:40am	11:10am
8:20	8:45	10:15	10:45	11:20am	11:50am	12:00pm	12:30pm
10:55	11:25	11:35	12:05pm	12:45pm	1:15pm	1:25	1:55
12:15pm	12:45pm	12:55pm	1:25	2:10	2:40	2:50	3:20
1:55	2:25	2:35	3:05	3:35	4:05	4:15	4:45
3:20	3:50	4:00	4:30	5:00	5:25	5:35	6:05
4:45	5:15	5:30	6:00	6:20	6:45	6:30	7:00
6:10	6:35	6:45	7:10				
7:20	7:50	7:55	8:20				

INFORMATION CONTACTS
511 (toll-free) or 711 (TDD)

E-mail/Comments to ferrycomments.goldengate.org
For Larkspur and Sausalito website: www.goldengate.org

HOLIDAY SERVICE: Larkspur & Sausalito
In effect on Martin Luther King, Presidents', Memorial, 4th of July, Labor Day, modified Holiday service is operated on the Day after Thanksgiving.

NO SERVICE: Larkspur & Sausalito
No ferry service on New Year's, Thanksgiving, and Christmas Day.



Adventure Cat			
2007 Departure Schedule	BAY CRUISE		SUNSET CRUISE
April 1 to Sept. 3 Daily	1:00 P.M.	3:00 P.M.	6:30 P.M.

Sunset cruise includes hors d'oeuvres and two drinks for \$45.

Bay Cruise Rates: Adults: \$25 / Children 6-12: \$15 / Kids 5 and under: Free

Group Discount Rates: 10 or more full fare passengers = \$5.00 off per person when run on one credit card

(800) 979-3370 / www.adventurecat.com

ALAMEDA/OAKLAND				ALAMEDA/OAKLAND																																											
Weekdays to San Francisco				Weekends and Holidays to San Francisco																																											
Leave Oakland	Leave Alameda	Arrive Ferry Bldg.	Arrive Pier 41	Leave Oakland	Leave Alameda	Arrive Ferry Bldg.	Arrive Pier 41																																								
6:00am	6:10am	6:30am	-----	9:00 am	9:10 am	---	9:35 am																																								
7:05	7:15	7:35	-----	10:40	10:25 *	11:10	11:25																																								
8:10	8:20	8:40	-----	12:20 pm	12:10 pm*	12:50 pm	1:05 pm																																								
9:15	9:25	9:45	10:00	1:55	1:45 *	2:25	2:40																																								
11:00	10:50	11:30	11:45	4:00	3:45 *	4:30	4:45																																								
12:45pm	12:35pm	1:15pm	1:30pm	5:45	5:30 *	---	6:20																																								
2:30	2:20	3:00	3:10	7:20	7:05 *	7:50	8:05																																								
4:40	4:30	5:10	-----	8:55	8:45 *	8:25	9:30																																								
5:50	5:40	6:15	-----	10:30	10:20*	---	11:00																																								
6:20*	6:10*	-----	7:00	Weekends and Holidays from San Francisco <table border="1"> <thead> <tr> <th>Leave Pier 41</th> <th>Leave Ferry Bldg.</th> <th>Arrive Alameda</th> <th>Arrive Oakland</th> </tr> </thead> <tbody> <tr> <td>8:30 am</td> <td>---</td> <td>9:10 am</td> <td>9:00 am</td> </tr> <tr> <td>9:45</td> <td>10:00</td> <td>10:20</td> <td>10:35</td> </tr> <tr> <td>11:35</td> <td>11:50</td> <td>12:10 pm</td> <td>12:20 pm</td> </tr> <tr> <td>1:10 pm</td> <td>1:25 pm</td> <td>1:45</td> <td>1:55</td> </tr> <tr> <td>2:50</td> <td>---</td> <td>3:45</td> <td>3:55</td> </tr> <tr> <td>4:55</td> <td>5:10</td> <td>5:30</td> <td>5:40</td> </tr> <tr> <td>6:30</td> <td>6:45</td> <td>7:05</td> <td>7:15</td> </tr> <tr> <td>8:10</td> <td>8:25</td> <td>8:45</td> <td>8:55</td> </tr> <tr> <td>9:40</td> <td>9:55</td> <td>10:15</td> <td>10:25</td> </tr> </tbody> </table>				Leave Pier 41	Leave Ferry Bldg.	Arrive Alameda	Arrive Oakland	8:30 am	---	9:10 am	9:00 am	9:45	10:00	10:20	10:35	11:35	11:50	12:10 pm	12:20 pm	1:10 pm	1:25 pm	1:45	1:55	2:50	---	3:45	3:55	4:55	5:10	5:30	5:40	6:30	6:45	7:05	7:15	8:10	8:25	8:45	8:55	9:40	9:55	10:15	10:25
Leave Pier 41	Leave Ferry Bldg.	Arrive Alameda	Arrive Oakland																																												
8:30 am	---	9:10 am	9:00 am																																												
9:45	10:00	10:20	10:35																																												
11:35	11:50	12:10 pm	12:20 pm																																												
1:10 pm	1:25 pm	1:45	1:55																																												
2:50	---	3:45	3:55																																												
4:55	5:10	5:30	5:40																																												
6:30	6:45	7:05	7:15																																												
8:10	8:25	8:45	8:55																																												
9:40	9:55	10:15	10:25																																												
6:55	6:45	7:20	-----																																												
7:55	7:45	8:20	-----																																												
8:55	8:45	-----	9:25																																												

ALAMEDA/OAKLAND FARES:				
	One Round Trip	10Ticket Way	20Ticket Book*	Monthly Pass
Adult (13+)	\$5.50	\$11.00	\$45.00	\$80.00 \$150.00
Child (5-12)	\$2.75	\$5.50		
Child under 5**	FREE	FREE		
Senior (65+)	\$3.25	\$6.50		
Disabled Persons*	\$3.25	\$6.50		
Active Military	\$4.25	\$8.50		

* On Giants weekday home game nights, these departures stop at AT&T Ballpark before proceeding to Pier 41.

PURCHASE TICKETS ONBOARD THE FERRY or at the Regional Transit Connection (RTC) at participating Bay Area businesses. Please call the 24-hour Ferry Fone at (510) 522-3300 to confirm times.

Seniors must show valid I.D., Regional Transit Connection, or Medicare Card. Military personnel must show Military I.D.

Sharing time with whales is a privilege.

415-331-6267

www.sfbaywhalewatching.com

Schedule information harvested online. Schedules are subject to change. June, 2007

Blue & Gold Ferry			
BAY CRUISE		SAUSALITO	
Leave PIER 39		FISHERMAN'S WHARF, PIER 41	
Weekdays		Weekdays	
10:45am	2:30	10:45am	2:30
11:30pm	4:00	11:30	4:00
12:00pm	5:00	12:00pm	5:00
1:15	6:30	1:15	6:30
Bay Cruise does not operate during inclement weather. Additional cruises may be added on demand. Check with ticket booth on day of sailing for schedule. No reserved seating available.			
FARES: All prices include audio tour.			
Adult \$21.00		Junior (12-18) \$17.00	
Senior (62+) \$17.00		Child (5-11) \$13.00	
Special Rates On Line			
ANGEL ISLAND			
Weekdays			
Leave Pier 41	Arrive Angel Island	Depart Angel Island	Arrive Pier 41
9:45am	10:00am	10:10am	10:50am
12:35pm	12:50pm	1:00pm	2:20pm
----	----	3:25*	3:40*
----	----	4:15	5:00
* Boat does not stop at Ferry Building			
Weekends			
Leave Pier 41	Arrive Angel Island	Depart Angel Island	Arrive Pier 41
9:45am	10:10am	10:20am	11:35am
11:45	12:10pm	12:15pm	1:10pm>
1:20pm>	2:10	2:15	3:10
3:20	3:45	3:55	4:50>
> Stop at PIER 41 prior to Ferry Building			
Angel Island Round		Round Trip via SF*	
Adult \$14.50		Child (6 - 12) \$8.50	
Child (5 - under) FREE		All prices include State Park Fees	
ANGEL ISLAND - OAKLAND			
Weekends ONLY			
Leave Oakland	Leave Alameda	Arrive Angel Island	
9:00am*	9:10am*	10:10am	
Leave Angel Island	Arrive Alameda	Arrive Oakland	
3:10pm	3:45pm	3:55pm	
* Requires transfer at PIER 41 onto 9:45 am Angel Island Ferry			
TIBURON			
DOWNTOWN S.F., FERRY BLDG.			
Weekdays			
Leave Tiburon	Arrive Ferry Bldg.	Leave Ferry Bldg.	Arrive Tiburon
6:00am	6:20am	----	----
6:50	7:10	7:15am	7:35am
7:50	8:10	8:15	8:35
8:45	9:05	----	----
----	----	4:25pm	4:45pm
5:00pm	5:20pm	5:25	5:45
5:50	6:10	6:15	6:35
6:40	7:00	7:15	7:35
FARES: One-Way Round Trip			
Adult \$8.50		Child (5-11) \$4.50	
20 Ticket Commute Book \$100.00			

Vallejo Baylink Ferry			
VALLEJO/SAN FRANCISCO			
FERRY BLDG./ FISHERMAN'S WHARF			
Weekdays			
Leave Vallejo	Leave Ferry Bldg.	Arrive Pier 41	Arrive Vallejo
5:30am	6:35am	----	7:30
6:30	7:35	----	8:30
7:00	8:10	----	9:05
7:45	8:55	----	9:50
8:45	9:55	----	10:50
10:00	11:10	11:30	12:30pm
11:30	12:40pm	----	1:35
1:00pm	2:10	----	3:05
2:00	3:30	3:10	4:25
3:20	4:30	----	5:25
4:05	6:00	----	6:55
5:35	6:45	----	7:45
6:35	8:05	7:45	9:05
Missed the last ferry from San Francisco? Take the bus to Vallejo, weekdays and weekends at 10:30pm from in front of the Pier 1 Deli.			
CROSSING TIME & BOARDING: Crossing time between Vallejo and San Francisco is about 1 hour. Ferries depart on time. Passengers should allow 15-20 minutes to park and purchase tickets at ferry terminals before boarding.			
Weekends and Holidays			
Leave Vallejo	Leave Ferry Bldg.	Arrive Pier 41	Leave Pier 41
8:45	9:55	----	10:50
10:00am	11:10	11:20	11:30
11:30	12:40pm	----	----
1:00	2:10	----	----
3:00	4:30	4:00	4:10
4:05	5:15	----	6:10
5:35	6:45	----	7:40
6:35	7:45	----	8:40
8:20	9:50	9:30	10:45
FARES:			
Adult One-Way \$11.50		Senior/Disabled/Medicare One-Way (65+/disabled)* \$5.75	
Youth One-Way (6-12 years) \$5.75		Baylink DayPass \$19.25	
Monthly Pass \$247.25		Monthly Pass with Muni \$287.25	
Call (707) 64-FERRY or visit www.baylinkferry.com for updated information.			
Angel Island - Tiburon Ferry			
ANGEL ISLAND/TIBURON			
Monday - Friday			
Tiburon to Angel Island		Angel Island to Tiburon	
10:00am, 11:00	1:00pm 3:00	10:20am 11:20	1:20pm 3:30
Weekends			
10:00am, 5:00pm hourly		10:20am, 5:20pm hourly	
July 4, 2007			
10:00am, 5:00pm hourly		10:20am, 5:20pm hourly	
Schedule Subject to change w/o notice		Adults (12 and over) \$10.25	
		Seniors \$10.25	
		Children (5 - 11) \$8.00	
		Children (4 and under) Free*	
		Bicycles \$1.00	
www.angelislandferry.com		Call (415) 435-2131	

Harbor Bay Ferry			
EAST END OF ALAMEDA/S.F.			
Leave Harbor Bay Island	Arrive S.F. Ferry Bldg.	Leave S.F. Ferry Bldg.	Arrive Harbor Bay Island
6:30am	6:55am	7:00am	7:25am
7:30	7:55	8:00	8:25
8:30	8:55	4:35pm	5:00pm
-----	4:30pm	5:35	6:00
5:05pm	5:30	6:35	7:00
6:05	6:30	7:35	8:00
7:05	7:30		
No service on weekends			
FARES:			
Alameda Harbor Bay Ferry passengers can purchase Ferry tickets, passes and books on board our ferries. Alameda Harbor Bay Ferry accepts cash, checks, Visa, Mastercard and Commuter Checks as payment for ferry tickets.			
Fare:			
One-Way Adult.....\$6.00		One-Way Juniors (5-12).....\$3.00	
Children (under 5).....Free		One-Way Seniors (62 & over)\$3.50	
Disabled\$3.50		Active Military\$4.75	
One-Way Commute (book of 10).....\$50.00		One-Way Commute (book of 20).....\$90.00	
Monthly Pass.....\$165.00		Free MUNI and AC Transit Transfers Provided	
Red & White			
BAY CRUISE SCHEDULE			
PIER 43 1/2			
Monday through Sunday			
10:00am	4:15	Fare:	
10:45	5:00	Adult \$21	
11:15	5:30	Senior (62+) \$18	
12:30pm	6:15	Youth (12-17) \$18	
1:15		Child (5-11) \$14	
1:45		Under 4 \$Free	
2:30			
3:00			
3:45			
Ferry Building Line			
All Ferry Building Line Cruises depart from Ferry Building Gate E.			
May 23, 2007 - September 2, 2007			
Wednesday, Thursday & Sunday			
11:00am - 12:30pm			
1:00pm - 2:30pm			
3:00pm - 4:30pm			
Friday & Saturday			
11:00am - 12:30pm			
1:00pm - 2:30pm			
3:00pm - 4:30pm			
5:00pm - 6:30pm			
Monday & Tuesday			
No scheduled cruises, available for group charters			
http://www.baycrossings.com/ferry_schedules.asp			

AT&T PARK SERVICE Direct service is available Alameda/Oakland and Vallejo for selected Giants baseball games. For service from Larkspur to selected games please visit goldengateferry.org. For more information, visit www.eastbayferry.com for Alameda/Oakland service and www.baylinkferry.com for Vallejo service. Or call Blue & Gold Fleet at (415) 705-8200.



Fun on Ferries, Shoreline Snacking and Shopping, Take the Kids, Bikes on Boats, Fun on Ferries...



Maze Repairs Expedited While Commuters Cope

BY BRENDA KAHN

The Maze meltdown became the Maze miracle when two East Bay freeway connectors closed by a spectacular accident and fire reopened ahead of the announced schedule — and when predicted traffic chaos failed to materialize.

News of the “Maze meltdown,” as the media quickly dubbed the incident, dominated local headlines and TV broadcasts for days after the fiery April 29 tanker truck accident on the connector between westbound Interstate 80 and southbound Interstate 880. The heat from the resulting

fireball was so intense that it caused a section of the overpass just above — the connector between the east end of the San Francisco-Oakland Bay Bridge (I-80) and eastbound Interstate 580 — to literally melt onto the roadway below.

The two connectors are key elements of what is popularly known as the Maze, the multilevel web of roadways distributing traffic going to and from the Bay Bridge. According to MTC Director of Highway Operations Albert Yee, the incident couldn’t have occurred on a more crucial spot. “It’s the convergence of three interstate freeways, so it’s the busiest interchange in the Bay Area,” he said. “Plus it’s the primary access to the Bay Bridge.”

If there’s a “luckily” to this story, it’s

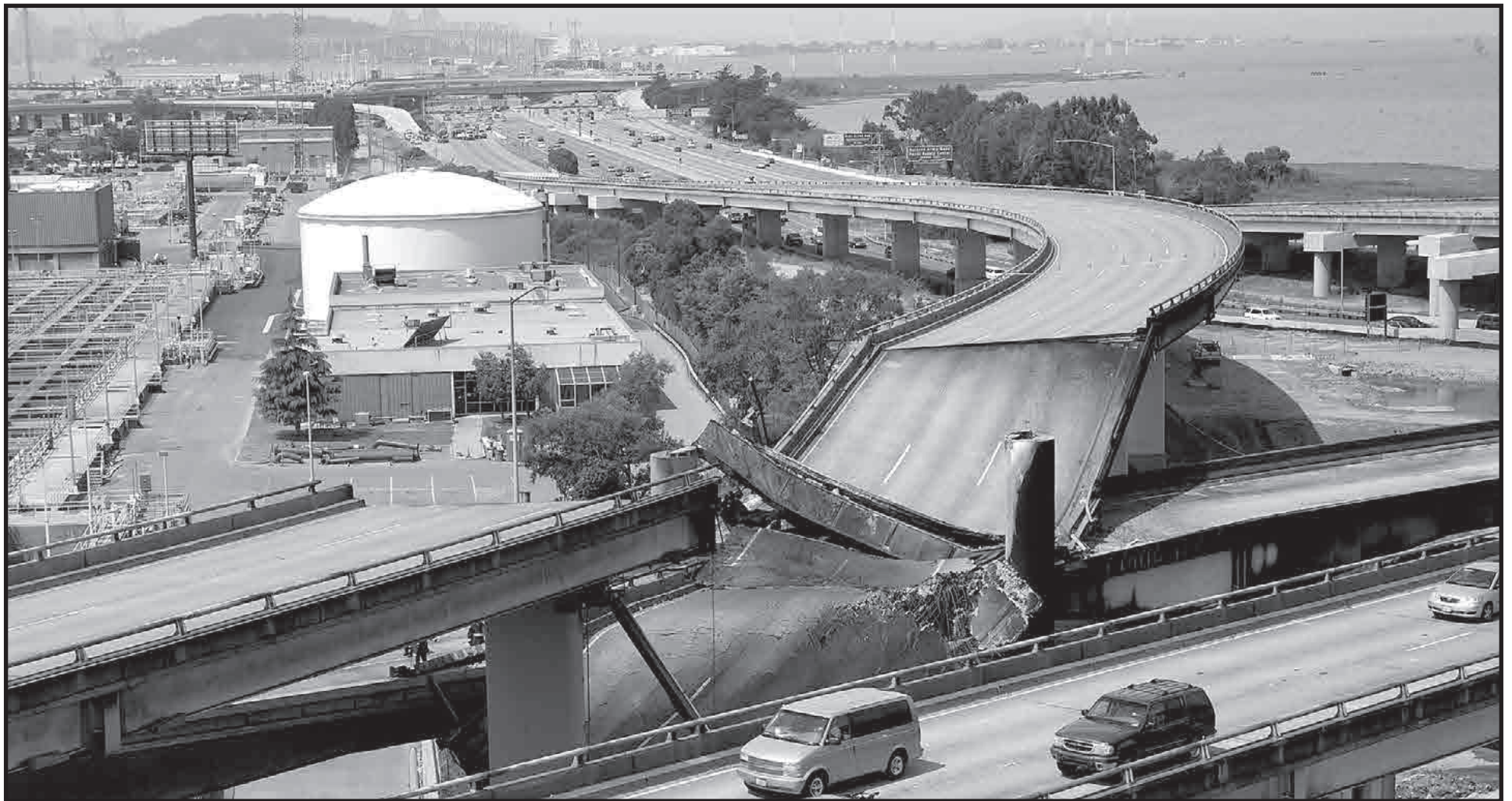
that the meltdown luckily happened in the wee hours of Sunday morning when the freeways were virtually empty, thereby averting any associated accidents or loss of life. The weekend timing also gave officials breathing room to work out a game plan before the Monday morning commute.

MTC partnered with Caltrans and transit operators to quickly activate emergency services and to declare a



free-ride day on all Bay Area public transit systems on Monday, April 30. They also scrambled to get the word out about commute alternatives via MTC’s 511.org traveler information Web site and 511 phone line, the news media, and other avenues.

BART added extra runs and lengthened trains, while the Alameda-Oakland Ferry added an extra boat. AC Transit also boosted service. The information blitz,



extra service and free transit rides did the trick: Come Monday morning, the Bay Bridge toll plaza was virtually empty as commuters took alternate freeway routes or took advantage of the offer of free transit rides. Traffic on the return trip in the afternoon also was light. While traffic volumes started to return to normal as the week wore on, MTC, Caltrans and the transit agencies were able to keep gridlock at bay.

Governor Schwarzenegger did his part by declaring a state of emergency in three counties, promising to cover the \$2.5 million cost of the free transit day and pledging to waive state contracting rules in order to expedite the reconstruction.

More good news was unveiled at an end-of-the-week press conference held at the site of the meltdown. U.S. Secretary of Transportation Mary Peters was on hand to announce \$2 million in emergency federal aid, which she called the “first installment of funds that will give construction crews the support they need to do their jobs.” Additional federal dollars are expected to follow once the full project cost is determined.

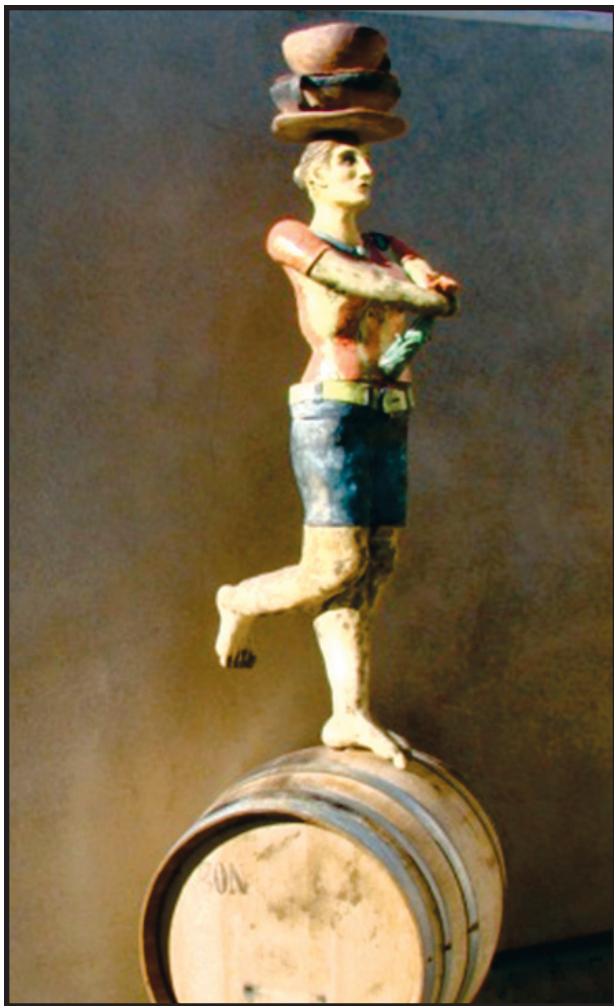
Meanwhile, crews labored around the clock to remove debris, test the viability of the damaged I-80/I-880 connector and make repairs. A mere week after the meltdown, Caltrans opened the I-80/I-880 connector in time for the Monday morning commute. The same day, Caltrans selected a firm to rebuild the I-80/I-580 connector – C.C. Myers, Inc. of Rancho Cordova, Calif., which came in with a low bid of \$867,075. The firm stands to earn \$5 million more in bonuses by completing the job by May 24 instead of by Caltrans’ original deadline of June 27.



Left: Heat from the tanker accident on the I-80-I-880 connector was so intense that it caused a section of the overpass above – the I-80 to eastbound I-580 connector — to melt onto the roadway below. (Photo by John Huseby, Caltrans) Above: Workers survey the damage. (Photo by Noah Berger) Below left: California Senator Barbara Boxer joined other state and federal officials at a press conference at the Maze site. (Photo by John Huseby, Caltrans) Below right: Caltrans and MTC moved quickly to alert commuters to traffic detours and the offer of free transit rides, with the result that the Bay Bridge toll plaza was virtually deserted the following Monday morning. (Photo by Noah Berger)



AROUND THE BAY IN JUNE



Decorated Wine Barrel by Ginny Parsons

Wine Barrel

What better way to spend a Saturday afternoon than tasting world class Rhône varietal and zinfandel wines, enjoying freshly made pizza and admiring art? Come to JC Cellars Summer Open House for “Barrels of Art

and Wine,” Sat. June 2, Noon to 5PM. 55 4th St., Oakland. \$25 general admission, \$20 Rhone Ranger Members with membership card, \$15 JC Cellars Wine Club Members. Children are welcome.

Oakland Tours

Take a guided walking tour and get a glimpse into Oakland’s past and present. Eight different tours showcase the city’s changing skyline, landmarks, churches and high-rises. Each of the eight tours begins at 10AM. Reservations are suggested and may be made by calling the Oakland Tours 24-hour hotline at (510) 238-3234. Itineraries online:

www.oaklandnet.com/walkingtours.

Clean Beach Sunday

Show up at Ocean Beach from on Sun, June 3, 10AM-12PM for the Surfrider Foundation beach cleanup (see page 19). Gloves and bags provided.

www.surfrider.org

Batter Swing

See them swing in the summer, and, in San Francisco, at night games under solar-powered lights. Take BART with the true fans to the A’s games.

Giants at home: 8-13, 22-27, 29-30. <http://sanfrancisco.giants.mlb.com>.

A’s at home: 1-7, 15-20.

<http://oakland.athletics.mlb.com>

Summer Cooking

The Center for Urban Education about Sustainable Agriculture (CUESA) is holding Market to Table seasonal cooking demonstrations every Saturday at 11AM in the Ferry Building Plaza. This CUESA Program is free. www.ferryplazafarmersmarket.com

Father’s Day

Bring Dad aboard the historic USS Hornet Museum in Alameda on Father’s Day, Sunday, June 17. Family activities and ship tours will be held from 10AM to 5PM. Visitors will have the opportunity to participate in mission briefings, see airplanes lifted to the flight deck, and sit in a fighter jet cockpit. There is ample free parking and a food concession. Admission is adults \$14, seniors (65 and older) \$12, Military ID and students \$12, youth 5-17 \$6, under 5 years free with paying adult. For reservations or information about Living Ship Day call (510) 521-8448, x-282.

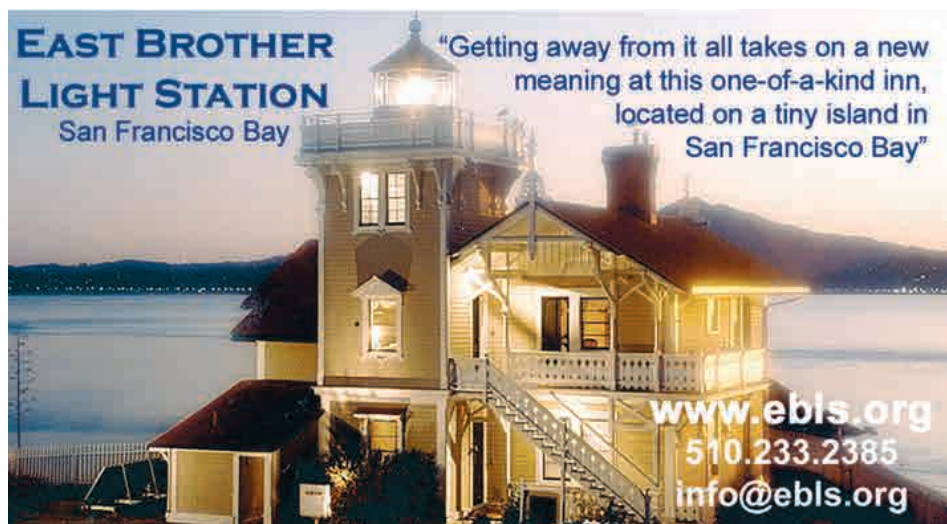
Maritime Gate

SF Maritime National Historical Park to Gate 78-Year-Old Municipal Pier to Prevent Overloading. A March 2007 engineering report identified extensive deterioration in the Park’s landmark Municipal Pier -- specifically, that, over the last 78 years, the maximum allowable “live load” capacity of the structure has fallen from 150 to 50 pounds per square foot. To protect the structure and assure visitor safety, San Francisco Maritime National Historical Park will install a gate at the Pier’s entrance, and restrict visitation during large public events. A new gate will be installed by the end of June.

To have your event or announcement considered for the Bay Crossings Around the Bay listings, please send information or a press release to: editor@baycrossings.com.

EAST BROTHER LIGHT STATION
San Francisco Bay

“Getting away from it all takes on a new meaning at this one-of-a-kind inn, located on a tiny island in San Francisco Bay”



www.ebls.org
510.233.2385
info@ebls.org

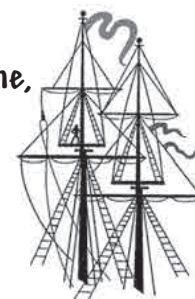
Experience the Adventure...

- Sail the Bay on the 1812 privateer Lynx! - June 10
- Watch the Blue Angels from the middle of the bay! - October 6

Join our fund raising sails, have a great time, support youth sailing scholarships!

For further information and to “book passage” visit us at www.ggtss.org or 415-331-1009.

Golden Gate Tall Ships Society



Great food to celebrate life in the City !

Enjoy a ten minute walk from the Ferry Building or short hop on the F-Line



Crab House at Pier 39

X Voted "Best Crab in San Francisco"

- Sizzling Skillet-roasted Mussels, Shrimp & Crab
- Romantic Cozy Fireplace
- Stunning Golden Gate Bridge View

Open Daily 11 am - 11 pm
2nd Floor, West Side of Pier 39
Validated Parking

crabhouse39.com 415.434.2722

FRANCISCAN CRAB RESTAURANT

- Whole Dungeness Crab
- Breathtaking Bay Views
- Bay side of Historic Fisherman's Wharf

Open Daily 11:30 am - 10 pm
Pier 43 1/2
Validated Parking

415.362.7733

franciscanrestaurant.com



For The Little Green Thumbs In Your House.

From gardening tools to indoor games,

Ambassador Toys brings you

a hand-picked selection of

toys and crafts from around the world.

Gift wrapping is complimentary.



Ambassador Toys

186 West Portal, San Francisco,
CA 94127. 415.759-TOYS

Two Embarcadero Center, Lobby Level,
San Francisco, CA 94111. 415.345-TOYS

Take a Giant leap across the Bay!

Catch a great deal

Ferry to/from
SF Giants games
starting April 4th

FOR NIGHT GAMES:

- Take Vallejo Baylink to the San Francisco Ferry Building. AT&T Park is a 20 minute walk along the picturesque Embarcadero.
- Direct service from the ballpark 25 minutes after the game*

FOR DAY GAMES:

- Use normal Ferry Building schedule

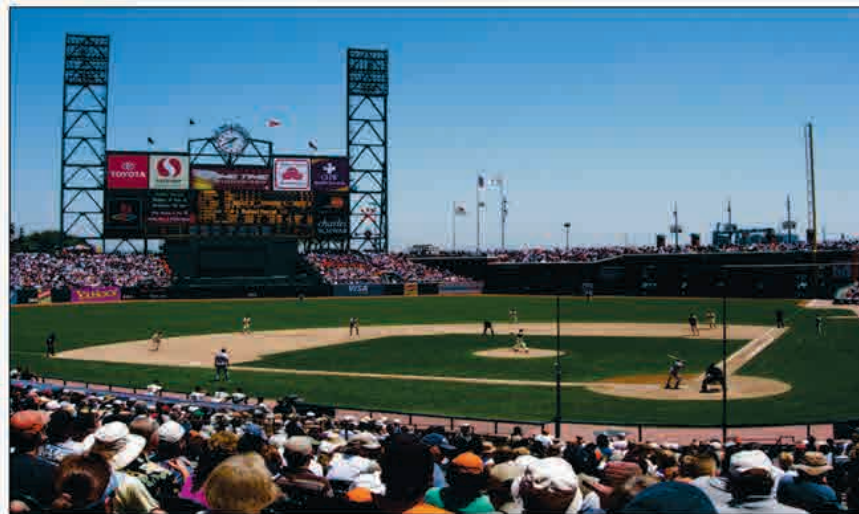


Photo by Seahorse8

*Ferry will leave no sooner than 10PM. In the event of fireworks, Vallejo service will depart McCovey Cove 5 minutes after the Alameda/Oakland service. See BayLinkFerry.com for details. Subject to change.

Traffic getting you down?

- Up to 13 sailings daily to/from SF Ferry Building
- Express bus service in Solano County
- Group rates now available

Baylink
Travel
the Easy Way

For information: 877.64.FERRY or BaylinkFerry.com

Spare the Air and Ride Transit FREE This Summer

On the first four Spare the Air weekdays
BART, Caltrain, ACE and all Bay Area ferries
will be FREE UNTIL 1:00 PM!

Bay Area bus systems will be FREE ALL DAY!*

SPARE THE AIR RIDE TRANSIT



For free transit details, visit 511.org

For advance notice of Spare the Air days, sign up for AirAlerts at sparetheair.org

Starts June 1, 2007, and ends October 12, 2007



Participating Transit Agencies

AC Transit
ACE
Alameda Harbor Bay Ferry
Alameda/Oakland Ferry
BART and AirBART
American Canyon Transit
Benicia Breeze
Caltrain
Cloverdale Transit
County Connection (CCCTA)
Dumbarton Express
Fairfield/Suisun Transit
Golden Gate Ferry and Bus
Healdsburg Transit
LAVTA/Wheels
Marin County Transit District
Muni
Petaluma Transit
Rio Vista Delta Breeze
St. Helena Shuttle
SamTrans
Santa Rosa CityBus
Sonoma County Transit
Tri Delta Transit
Union City Transit
Vacaville City Coach
Vallejo Transit
VINE
VTA
Yountville Shuttle
WestCat

* Includes light-rail transit